

craft with Jo-Ann



more projects, tips & techniques at Joann.com®

free

SUPPLIES & TOOLS:

- 14-count red aida cloth
- 32-count white linen
- Red & white embroidery floss
- Transfer paper
- Embroidery needles
- Scissors
- Ruler
- KI® Memories 12"x12" Snowflake papers: Alpine Snow Lace, Red Snowflake Luster, Oh What Fun, Flurry Lace Cardstock
- DMC® Color Infusions Memory Thread, red
- Sewing machine
- Basic sewing supplies
- Thread
- Various cards with envelopes: red 5½" square, white 4¾"x6½", white 5¼"x7¾"
- Adhesive

DIRECTIONS:

Deer with Tree Card:

1. Cut 8" square of white linen.
2. Transfer provided design onto front of linen, centering on an angle.
3. Using four strands of red embroidery floss, stitch design with stem, outline or turkey stitch. Use a French knot for eye.
4. Trim linen to 4½"x4½".
5. Cut Red Snowflake Luster paper slightly smaller than red 5½" square card. Adhere to front of card.
6. Lay embroidered piece on top of paper and zigzag stitch on both sides. Cut a 1/2" strip of paper and add diagonally to upper right-hand corner of card. Zigzag across center of strip. Fold edges to inside of card and adhere in place.
7. Cut up old Christmas cards or computer generate greeting on cardstock. Size to fit lower left-hand bottom, stitch in place using a straight stitch.

Three Snowflakes Card:

1. Cut an 8" square of red aida cloth. Transfer snowflake designs onto cloth. Refer to photo for placement.
2. With basic straight stitch, embroider snowflakes using 4 strands of white floss.
3. Trim cloth to 3½"x5¾". Fray all edges.
4. Cut Oh What Fun paper slightly smaller than 4¾"x6½" card. Stitch to card along top, right side & bottom using large zigzag stitch. Lay embroidered piece along left side of card. Top and bottom will hang over card. Stitch all

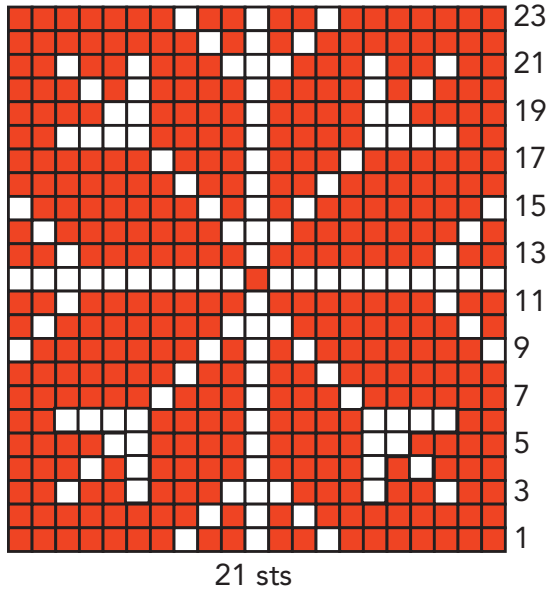
sides in place using straight stitch.

5. Cut apart several sizes of snowflakes from Flurry Lace Cardstock. Add to card as desired, stitch in place. Fold edges of snowflakes upward for added dimension.
6. Cut up old Christmas cards or computer generate greeting on cardstock. Stitch in place on card.

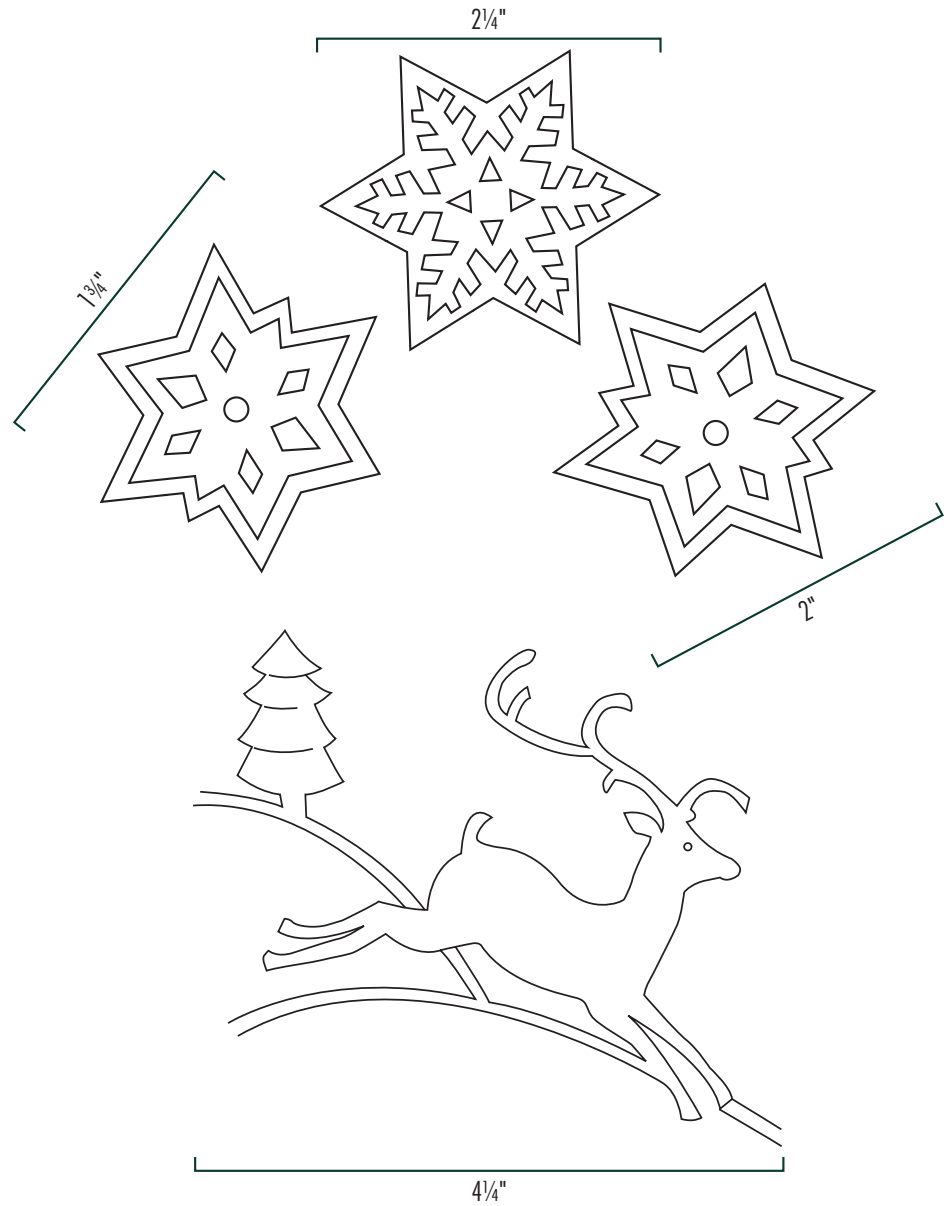
Cross-Stitch Snowflake Card:

1. Cut a 6" square of red aida cloth. Follow the provided pattern for cross-stitching the snowflake design. Use 4 strands over 2 threads. Trim cloth to within 4 threads of finished snowflake. Fray edges.
2. Cut Alpine Lace paper slightly smaller than 5¼"x7¾" card. Adhere to front.
3. Cut up old Christmas cards or computer generate greeting on cardstock to fit at bottom of card. Stitch in place using large zigzag along top and bottom of card and a straight stitch only at top edge of greeting.
4. Adhere cross-stitched piece at a diagonal to upper area of card. Using Color Infusions red memory thread, twist into a small flower or bow shape. Coil ends and adhere in place at center of design.

Optional: Add stitching, paper scraps or snowflakes to envelopes.



21 sts



Created by Jo-Ann Fabric and Craft Stores®	
Skill Level 3: Experience necessary	Approximate Crafting Time: 1 hour per card plus embroidery time

Please read and follow all manufacturers' instructions for all tools and materials used. Provide adult supervision if children participate in this project.
©2011 Jo-Ann Stores, Inc.

