

## craft with Jo-Ann

**SUPPLIES & TOOLS:**

## Wreath:

- 1 can Krylon® gloss spray paint, red
- 18" Grapevine wreath
- 1 pkg 22-gauge cloth stem wire, dark brown
- 24" Japanese pine spray stem
- Glue gun & glue sticks
- Pine & berry scraps
- Scissors or cutting tool

## Knitted Trees:

- Lion Brand® Wool-Ease® yarn, 1 skein each: Ranch Red, Fisherman
- Knitting needles: sizes 6 & 7
- Yarn needle
- Scissors
- Craft glue
- Styrofoam® brand foam cones, 1 each: 6" & 9"
- Knitting row counter, optional

## Crocheted Snowflakes:

- Lion Brand® Wool-Ease® yarn, 1 skein: Fisherman (should have enough from knitted trees)
- Crochet hooks: sizes C-2 & E-4
- Scissors
- Fabric glue
- Spray starch
- Iron

**DIRECTIONS:**

## 9" Tree Yarn Bombing:

1. With Ranch Red yarn, cast on 54 stitches.
2. Using the Stranded, or Fair Isle, method, follow the provided chart. Decreases are performed every 3 rows at both ends of the row by knitting or purling 2 stitches together.
3. After knitting 54 rows, there should be 18 stitches remaining. Cut yarn leaving a long tail. Thread end onto yarn needle and pass through the remaining stitches twice, pulling tightly to close.
4. Sew seam. Stretch completed piece over 9" foam cone. Craft glue can be used to secure the knitted piece to the bottom of cone if necessary.

### 6" Tree Yarn Bombing:

1. With Fisherman yarn, cast on 46 stitches. Beginning with a knit row, knit in stockinette stitch (knit 1 row, purl 1 row) for 6 rows. At the same time, decrease 1 stitch at beginning and end of every third row for the entire project.
2. Cut Fisherman yarn, leaving an 8" tail and join Ranch Red yarn. Knit 25 rows with the Red Ranch yarn; continue to decrease at beginning and end of every 3rd row.
3. Change to fisherman yarn and knit 7 rows, continuing the same decreases. There should be 20 stitches remaining. Cut yarn, leaving a long tail. Thread tail onto yarn needle and pull yarn through the 20 stitches twice, pulling tightly.
4. Using Fisherman yarn, complete duplicate stitch pattern to add snowflake.  
Note: Duplicate stitch is a method to add a pattern to your knitted piece, much like embroidery. Work on the knit side of stockinette stitch to form Vs over the stitches, duplicating the stitch that is already there. To decide where the stitching is to begin, bring the point of a yarn-threaded needle up through the point of the V in the first stitch you want to duplicate. Pull the yarn through, repeat for other half of V. Refer to snowflake pattern to create design on the tree.
5. Stretch completed piece over the 6" foam cone. Using yarn needle, sew edges together. Craft glue can be used to secure the knitted piece to the bottom of cone if necessary.

### Crocheted Snowflakes:

Large Snowflake is 4½" wide

Small Snowflake is 3½" wide

Use C crochet hook for small and E crochet hook for large.

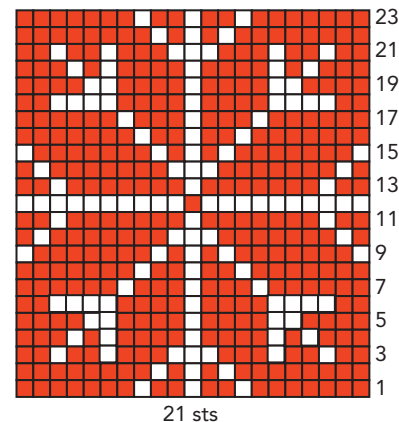
1. Ch. 6, sl st in first ch. to form a ring.
2. Ch. 1, make 2 scs in ea. ch., sl st in ch. 1. (12 scs)
3. Ch. 5, skip first sc, sc in next sc, ch. 5 and repeat till you have 7 — 5 ch loops. Sl st in previous sl st.
4. For each ch. 5 loop: Sl st in first 3 chs on ch 5 loop. Ch 5, sl st in 3rd ch. from hook, ch 3, sl st in sl st, ch. 3, sl st in sl st. (This will create 3 ch 3 picots) Ch. 2, sl st in center of ch. 5 loop, sl st in last 2 chs. on this loop. Repeat this step till all 7 — ch. 5 loops are completed.
5. To finish sl st in sl st.
6. Weave the ends to the back and tie in a knot. Secure the ends with fabric glue.
7. Press snowflakes lightly. Use spray starch to stiffen.

### Assemble Wreath:

Note: Refer to photo often for placement of items. Make knitted trees & crocheted snowflakes before assembling wreath.

1. Remove the piece of vine that is wrapped around the wreath. Reserve vine piece.
2. Pull wreath apart and adjust to a loose oval shape.
3. Cut long pieces of stem wire and use to secure shape. Keep wires long and wrap several times to hold. Wrap wires around a pencil to create tendrils.
4. Spray wreath with red paint. This requires several coats for good coverage. Let dry completely between applications.
5. Glue knitted trees in place. Arrange pine & berry accents on wreath and glue in place.
6. Add crocheted snowflakes where desired and glue in place.

6" Tree Outline



9" Tree Outline



Created by Jo-Ann Fabric and Craft Stores®

Skill Level 3: Experience necessary

Approximate Crafting Time: Weekend project

Please read and follow all manufacturers' instructions for all tools and materials used.  
Provide adult supervision if children participate in this project.  
©2011 Jo-Ann Stores, Inc.

**JO-ANN**  
fabric and craft stores®  
P312-775 • 322-118