

Courtesy of Sue  
Dreamer  
Designed by Cheryl A.  
Adam

**Supplies:**

*Use Sue Dreamer Girlfriends fabrics and Quilters Only Solids.*

- 1 1/2 yds. Sampler
- 1 yd. Mini Border
- 3/8 yd. Patch
- 3/8 yd. Tossed Shoes
- 1/4 yd. Stripes
- 3/4 yd. Purses, includes fabric for binding
- 1/4 yd. Dots

- 1/4 yd. Checks
- 1/4 yd. Tossed Words
- 1/4 yd. Tossed Undies
- 1/2 yd. Pale Iris Solid
- 3/4 yd. Banana Cream Solid
- 4 yds. backing fabric
- 52" x 64" batting
- Lightweight paper for tracing

**Directions:**

**Piecing Instructions:**

**For Shoe Blocks**

1. Photocopy the Shoe Block paper-piecing pattern onto lightweight paper. Make three copies of each of the three sections of the pattern.
2. Using the quilt photograph as a color chart, cut the fabrics for the three pattern sections. Remember to do this from the *unmarked* side of the paper and with the right side of the fabrics facing up. Fabrics should be at least 1/2" larger than the finished size of each pattern piece.
3. For each pattern section, place fabric piece 1 on the *unmarked* side of the paper pattern, right side up, making sure that it covers the entire area of its pattern piece. Place fabric piece 2, right side up, positioning it so that it covers its pattern piece. Carefully flip piece 2 over onto piece 1, so that the right sides are together, making sure that both fabric pieces cover the stitching line and allow for seam allowances. Pin the pieces in place. Turn the paper pattern over and stitch on the line between pieces 1 and 2.
4. Flip fabric piece 2 over, so that the right side is facing up; press. Check again to make sure that fabric covers the entire pattern piece. Continue sewing the fabric pieces to the paper pattern in numerical order until the section is complete. Trim the outside edge seam allowances to 1/4". Remove paper pattern from fabric section.
5. Repeat Steps 3 and 4 for the pattern pieces in the remaining two sections. Sew the three sections together to complete the Shoe.
6. Cut a 4 1/2" x 10 1/2" rectangle of Patch fabric. Sew this piece along the top of the Shoe to complete the block. Make two more Shoe Blocks for the quilt top.

**For Purse Blocks**

1. Photocopy the Purse Block paper-piecing pattern onto lightweight paper. Make six copies of each of the four sections of the pattern.
2. Follow Step 2 above.
3. Follow Step 3 above.
4. Follow Step 4 above.
5. Repeat Steps 3 and 4 for the pattern pieces in the remaining three sections. Sew the four sections together to complete the Purse Block. Make five more Purse Blocks for the quilt top.

**For Patch Blocks**

Cut a 4 1/2" x 7 1/2" rectangle of Patch fabric. Sew a 4 1/2" x 2 1/2" rectangle of Pale Iris fabric to the top of the Patch fabric piece. Sew a 4 1/2" x 1 1/2" rectangle of Pale Iris fabric to the bottom of the Patch fabric piece. Make one more Patch Block for the quilt top.



## You Can Never Have To Many Shoes or Purses



Directions continued:

### Row Assembly Instructions

**Block Row 1:** Cut six 2 1/2" x 10 1/2" strips of Pale Iris fabric. Cut one 2 1/2" x 10 1/2" strip of Mini Border fabric with the stripes running along the 10 1/2" length. Following Diagram 1, join the strips and blocks into a horizontal row.

**Block Row 2:** Cut five 2 1/2" x 10 1/2" strips and two 1 1/2" x 10 1/2" strips of Pale Iris fabric. Cut three 2 1/2" x 10 1/2" strips of Mini Border fabric with the stripes running along the 10 1/2" length. Following Diagram 2, join strips and blocks into a horizontal row.

**Block Row 3:** Follow cutting directions for Block Row 1. Follow Diagram 1 to join strips and blocks, except switch the placements of the Shoe Block and Patch Block (see quilt photograph for reference).

**Strip Rows:** Cut eight 2 1/2" x 24 1/2" strips of Mini Border fabric with the stripes running across the 2 1/2" width. Sew short ends of strips together in pairs to make four 2 1/2" x 48 1/2" strips. Cut three 3 1/2" x fabric width strips of Tossed Shoes fabric. Sew short ends of strips together; cut to create two 3 1/2" x 48 1/2" strips. Following Diagram 3, join Mini Border strips and Tossed Shoes strips lengthwise into two horizontal strip rows.

### Quilt Top Assembly Instructions:

Cut two 8 1/4" x 48 1/2" strips of Sampler fabric. Assemble the quilt top from top to bottom in the following order (see quilt photograph for reference): Sampler strip – Block Row 1 – Strip Row – Block Row 2 – Strip Row – Block Row 3 – Sampler strip.

### Finishing Instructions:

1. Cut backing fabric in half widthwise. Sew two panels, right sides together, along one selvage edge; press seam allowance open.
2. Place the backing wrong side up on a smooth, flat surface. Center the batting on top of the backing. Center the quilt top right side up on top of the batting. Baste layers together and quilt as desired. Trim away excess backing fabric and batting.
3. Cut 1 1/2" wide strips of Purse fabric. Sew binding strips together at ends to make one continuous strip. Press under 1/4" along one long raw edge of strip. Press under 1/2" along one short raw end of strip.
4. Beginning at folded end, stitch remaining long raw edge of strip to quilt top edge, right sides together, folding strip over at corners to miter. Overlap ends 1/2". Turn the binding strip to the back of the quilt and slipstitch in place for a smooth finish.
5. Embellish quilt top by adding 1" covered buttons to the purse flaps. Make buttons from fabric scraps, following manufacturer's instructions.

**Skill Level: Some experience helpful**

Due to seasonal nature of project, supplies are available for a limited time only. Please read all instructions prior to beginning; read and follow all manufacturers' instructions for all tools and materials used. Provide adult supervision if children participate in this and all craft projects. Because Jo-Ann Stores, Inc. has no control over the use of materials and tools, nor surroundings, during construction of projects, Jo-Ann Stores, Inc. disclaims any liability for injury, damage or other untoward results. Content of this project sheet is presented in good faith, but no warranty is given, nor results guaranteed. ©2006 Jo-Ann Stores, Inc. All rights reserved. 197-386

**JO-ANN**  
fabric and craft stores



# Purse Block Paper - Piecing Pattern

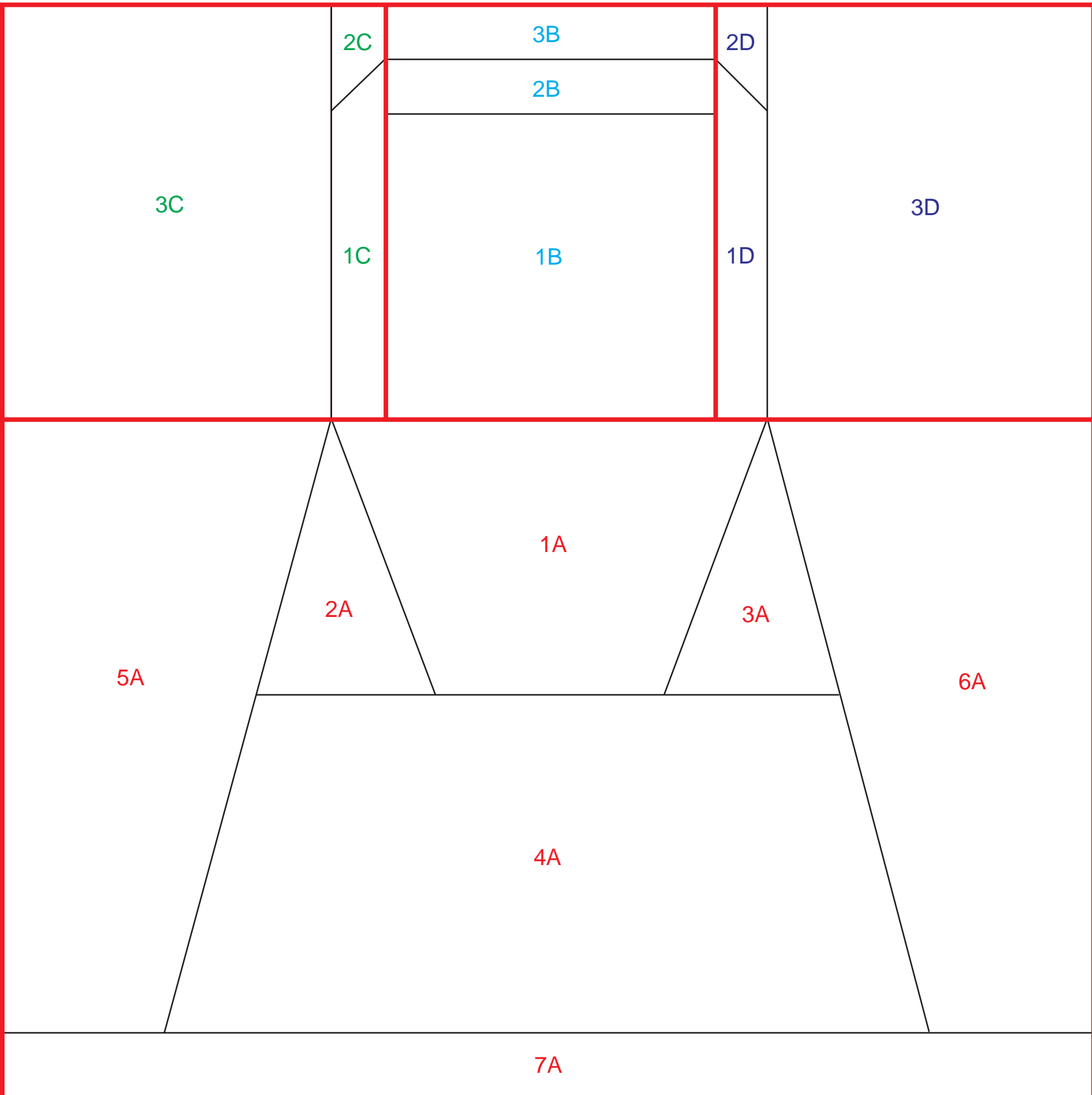
Finished block size: 10" x 10"

© Cheryl A. Adam

Section C

Section B

Section D



Section A

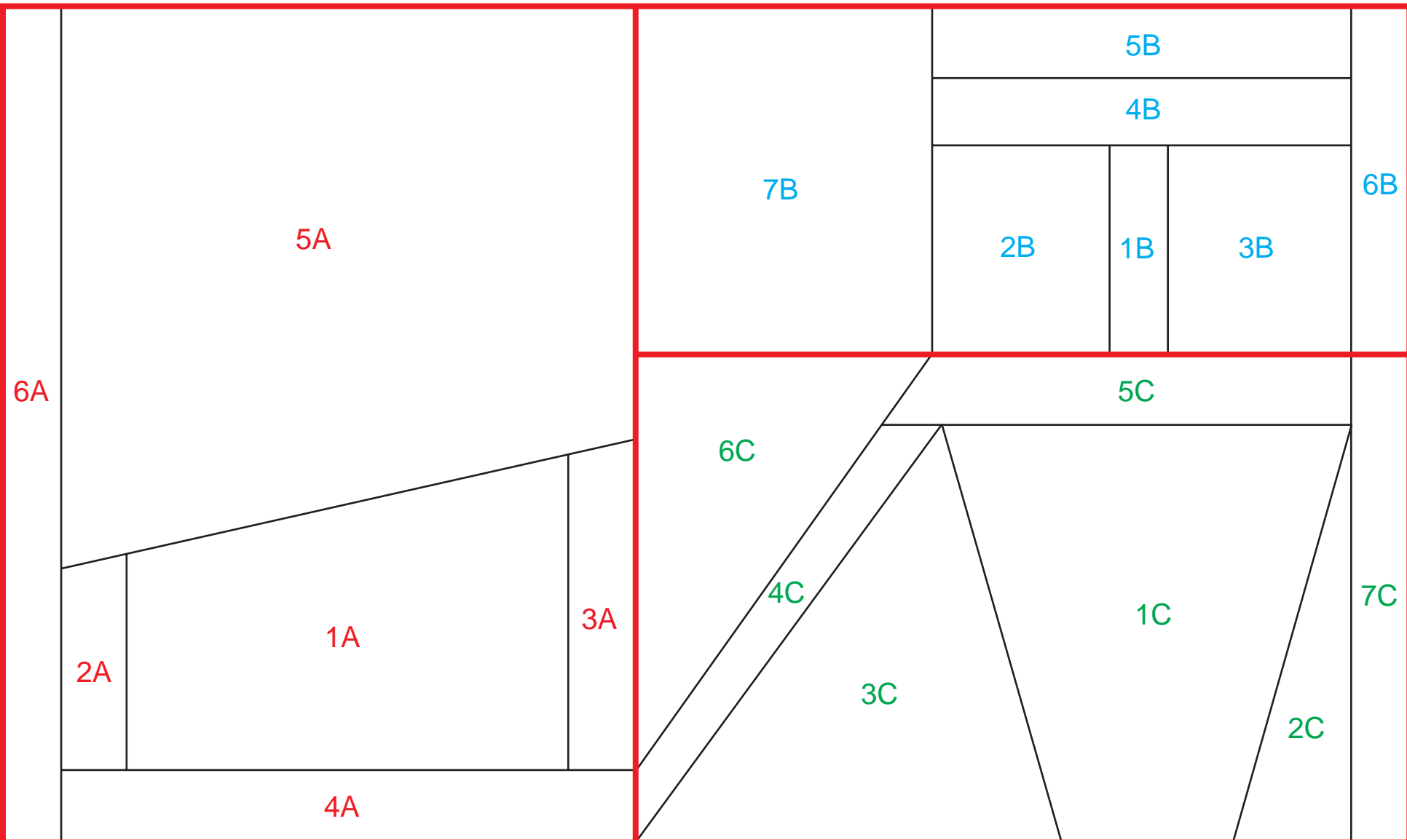
# Shoe Block Paper - Piecing Pattern

Finished block size: 6" x 10"

© Cheryl A. Adam

## Section A

## Section B



## Section C

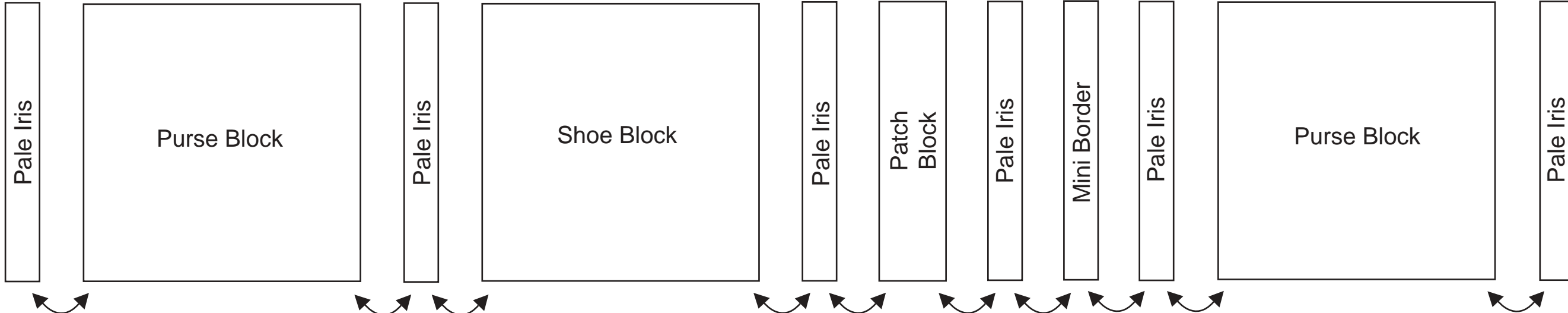


Diagram 1

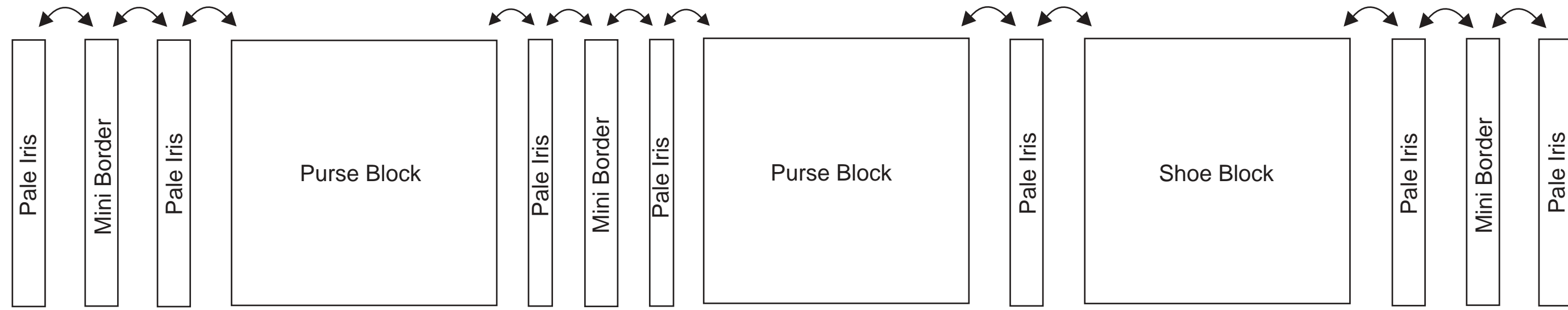


Diagram 2



Diagram 3