



Ergonomic Sewing Tools

Hands that ache from arthritis or carpal tunnel syndrome demand new ergonomic engineering. The most frequently used sewing tools have been ergonomically designed with rounded soft-grip features to make them easier to hold and handle with comfort.

Seam Rippers

No matter the sewing skill level, from time to time all sewers reach for a seam ripper to practice the task of "reverse sewing." Choose the soft-grip shorter handle with a fine blade or the longer handle with a heavy duty blade.



Tracing Wheel

The proper way to use a marking tool is with index finger extended along the top edge of the handle. This serrated tracing wheel is designed with a flat edge on top, providing a place for the finger to rest, while reducing the strain on your hand and wrist.



Awl

An awl is used to pierce a hole in a variety of surfaces from fleece and leather to wood. The handle of this awl is comfortable even when significant pressure is exerted at odd angles. The tapered point allows the hole size to increase with the depth of the puncture.



www.dritz.com

Helpful Sewing Tools

Tools are designed for accomplishing specific tasks. The correct tool helps complete the project easier and often more quickly.

Seam Rippers

A seam ripper is a pointed tool used to remove unwanted stitches, or to open a buttonhole.

Curved Blade – Extra-sharp concave point quickly cuts through stitches created with a serger or sewing machine.

Magnified – Heavy duty blade seam ripper with an adjustable magnifier that enlarges the view of blade and stitches.

Lighted – Battery-operated light is a combination seam ripper and threader. Ideal for use on darker fabrics.



Bodkins & Threaders

Bodkins and threaders are used to guide trims or elastic through narrow casings and eyelets.

Ball Point Bodkin – Rounded tip smoothly slides into casings for inserting elastic or to insert ribbon through eyelets.

Drawstring Threader – Use when replacing or adding a drawstring to hoods, activewear, bags and totes.

Tube Turners

These handy tools turn fabric tubes right side out.

Loop Turner – Ideal for turning narrow bias tubing when making button loops, shoulder straps, frog closures and Chinese ball buttons.

Quick Turn – 3 sizes of plastic cylinders and wooden rods used to push and turn fabric tubes quickly and easily.

Clip 'N Turn – Clips on end of turners hold delicate or slippery fabric securely as tube is turned. Can also be used for inserting cording into a tube to create fabric covered cord.



Due to seasonal nature of project, supplies are available for a limited time only. Please read all instructions prior to beginning; read and follow all manufacturers' instructions for all tools and materials used. Provide adult supervision if children participate in this and all craft projects. Because Jo-Ann Stores, Inc. has no control over the use of materials and tools, nor surroundings, during construction of projects, Jo-Ann Stores, Inc. disclaims any liability for injury, damage or other untoward results. Content of this project sheet is presented in good faith, but no warranty is given, nor results guaranteed. ©2007 Jo-Ann Stores, Inc. All rights reserved.

JO-ANN
Fabric and craft stores

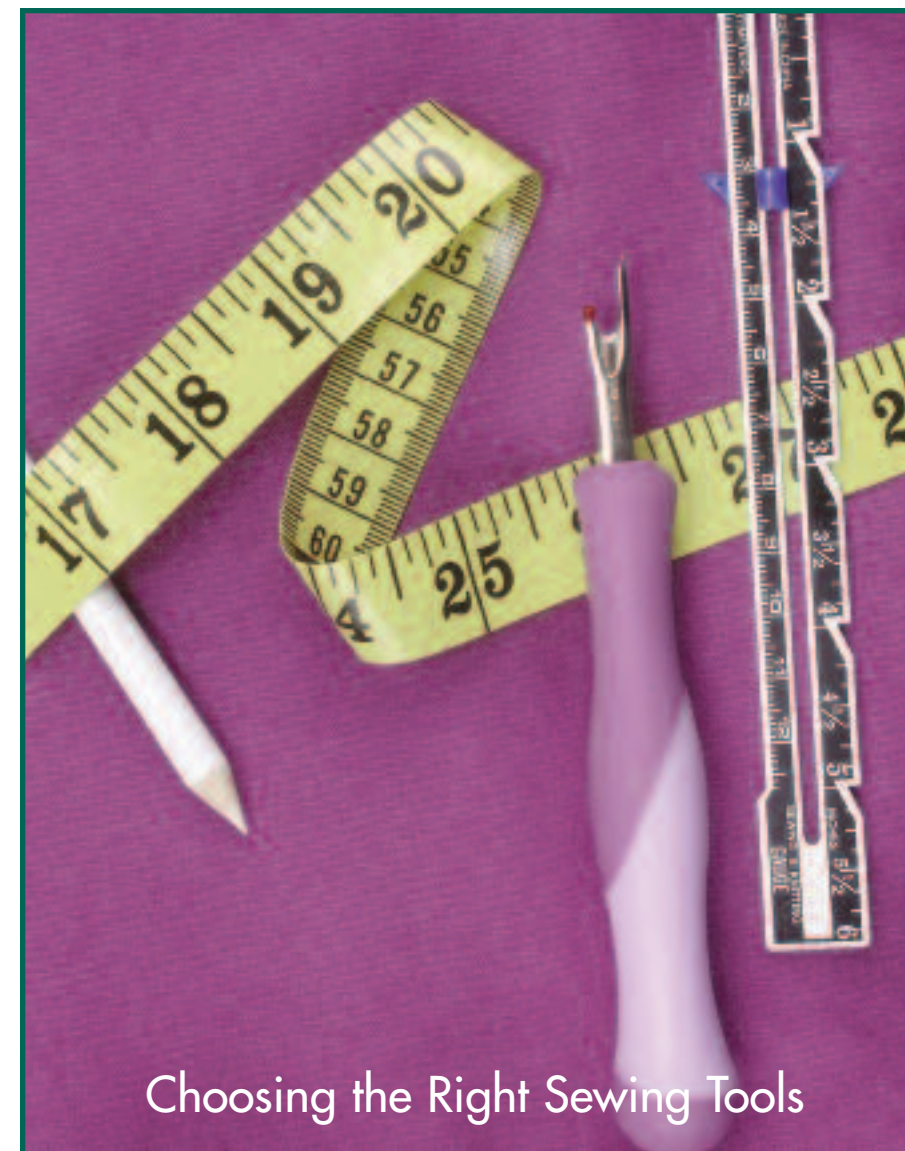
Dept. 2173 • P507-214



FREE

*JO-ANN
IDEA™

sewing tools



Choosing the Right Sewing Tools

reorder: sewing tools #1

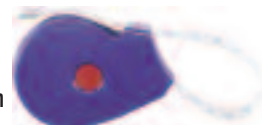
more projects available at Joann.com

Measuring

Accuracy in measuring is as important today as when the first tape measure was introduced during the War of 1812. Each measuring device has characteristics inherent in its design, specific to its task. Whether taking body measurements or measuring for a home décor project, there is a tool designed to make measuring easy and accurate.

Wrap 'N Stay Retractable Tape Measure

This tape is used for measuring circumferences. The case has a built-in slot to hold the tape securely so you can take your own body measurements quickly and easily.



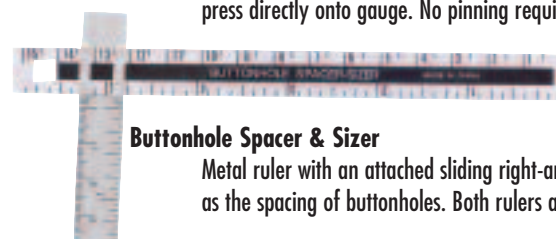
Sewing Gauge

Handy 6" metal ruler has a sliding indicator to mark a specific measurement. Its small size and clear markings make it ideal for repeat measurements on hems and seam allowances and for spacing tucks, pleats and buttonholes.



Ezy-Hem® Gauge

Metal gauge has markings to measure curved or straight hems. Simply fold fabric over the edge and press directly onto gauge. No pinning required.



Buttonhole Spacer & Sizer

Metal ruler with an attached sliding right-angle ruler used to determine the size as well as the spacing of buttonholes. Both rulers are marked with inches and centimeters.

See-Thru Ruler

Plastic ruler with 1/8" inner grid lines and 1/16" outer edge markings designed for drafting, designing and enlarging patterns. Small holes in the center of the ruler are used for drawing circles and scallops. See-thru grid markings make it easy to draw and mark perpendicular lines.

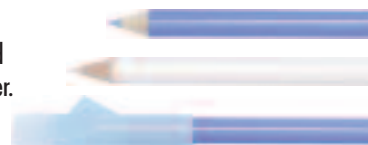


Marking

Accurately marking a design or transferring a construction detail to your sewing project can make the difference between success and failure. Choose a marking tool that is appropriate for the fabric. Testing on a scrap of the same fabric as your project can ensure it does no damage and that the marks can be removed to your satisfaction.

Dressmaker & Water Soluble Pencils

Use to mark construction details such as darts, pleats and buttonholes. Marks can be removed with a brush or water.



Soapstone Marker

Soapstone is safe for all fabric types and is ideal for marking dark fabrics. Marks can be easily rubbed off or removed by washing.



Mark-B-Gone™ & Disappearing Ink Pens

Pens are formulated with special ink, perfect for marking construction details as well as guidelines for surface embellishments. Water-soluble ink can be removed with plain water. Air-soluble ink will disappear in 24 to 72 hours or can be removed sooner with water. Use pens on washable fabrics *only* and never on fabrics that are dry clean only.



Tailor's Chalk

A classic marking tool often used by tailors. Use to draw lines directly on the fabric and mark alterations. Marks can be easily rubbed off with a damp cloth.

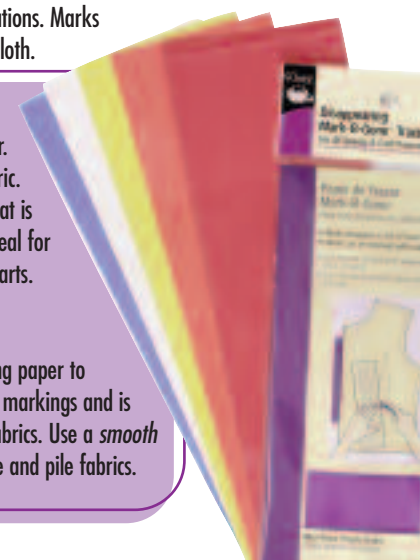
Tracing Paper

Single or double-sided marking transfer paper. Tracing wheel transfers wax free color to fabric. Also available as a disappearing ink paper that is either air or water soluble. Tracing paper is ideal for marking stitching lines, placement lines and darts.



Tracing Wheels

Tools used to transfer markings through tracing paper to fabric. A *serrated tracing wheel* makes dotted markings and is used for marking multiple layers and bulky fabrics. Use a *smooth tracing wheel* for marking lightweight, delicate and pile fabrics.



Pressing

Pressing matters...Pressing involves moving a steam iron repeatedly in an up and down motion, to shape and mold fabric. In garment construction, the key to professional-looking clothing is pressing as you sew with the proper pressing tools and techniques.

Tailor's Ham

A ham-shaped pressing surface used for pressing and molding darts, sleeve caps and curved seams. Garment pieces are shaped by draping fabric over the ham when pressing.



Seam Roll

A long, rounded pressing surface designed for hard-to-reach areas. Use for pressing seams open on long and narrow areas such as sleeves and pant legs.

Tailor's Hams and Seam Rolls help prevent a pressed-in ridge created when layered items are pressed on a flat surface.

Tip: A tailor's ham and a seam roll have two sides. One half of the pressing surface is wool and the other half is cotton. Use the wool side for woolens, synthetic blends and fabrics requiring low to medium temperatures. Use the cotton side for cotton, linen and fabrics requiring medium to high temperatures.

Pants Seam Pressing Board

This long, flat board, covered with silicone-treated fabric, is designed for quick and easy pressing of pant seams. Slide the board inside pant leg and press seam allowance open. It prevents impressions from opposite side seam and eliminates unwanted creases.

Hot Iron Cleaner

Use regularly on the soleplate of your iron to keep it clean and free of build-up caused when fusible or adhesive type products and starch are used.

