



CROCHET | SKILL LEVEL: **INTERMEDIATE**

ABBREVIATIONS

Approx = Approximately

Ch = Chain(s)

Rep = Repeat

Rnd(s) = Round(s)

RS = Right side

Sc = Single crochet

Scbl = Single crochet through back loop only

Sp(s) = Space(s)

St(s) = Stitch(es)

Tog = Together

FINISHED MEASUREMENTS

Approx 49" x 54" [124.5 x 137 cm].

GAUGES

12 sc and 13 rows = 4" [10 cm].

INSTRUCTIONS

Notes:

- To change color, work to last 2 loops on hook and draw new color through last 2 loops, then proceed in new color.
- Each Panel measures approx 15" [38 cm] wide.

MATERIALS

Caron® One Pound™ (16 oz/454 g; 812 yds/742 m)

Contrast A Black (10503) **1 ball**

Contrast B Off White (10514) **2 balls**

Contrast C Raspberry Pink (10646) **1 ball**

Caron® Jumbo™ (12 oz/340 g; 659 yds/602 m)

Contrast D Lush (09057) **1 ball**

Size U.S. H/8 (5 mm) Susan Bates® Silvalume® crochet hook **or size needed to obtain gauge.** Susan Bates® yarn needle.



FINISHING

Pin all pieces to measurements. Cover with a damp cloth leaving cloth to dry. Following diagram, sew Panels tog.

Edging: 1st rnd: (RS). Join B with sl st to top right corner. Ch 1. Work in sc evenly around having (1 sc. Ch 1, 1 sc) in corners. Join with sl st to first sc.

2nd rnd: Ch 1. 1 scbl in each sc having (1 sc. Ch 1, 1 sc) in corner ch-1 sp. Join C with sl st to first sc. **Do not** break B.

3rd and 4th rnds: With C, rep last rnd twice. Join A. **Do not** break C.

5th rnd: With A, rep last rnd once.

6th and 7th rnds: With C, rep last rnd twice.

8th and 9th rnds: With B, rep last rnd twice.

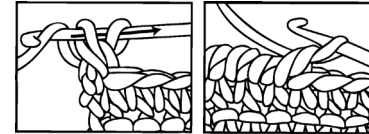
10th and 11th rnds: With D, rep last rnd twice.

12th rnd: With A, rep last rnd once.

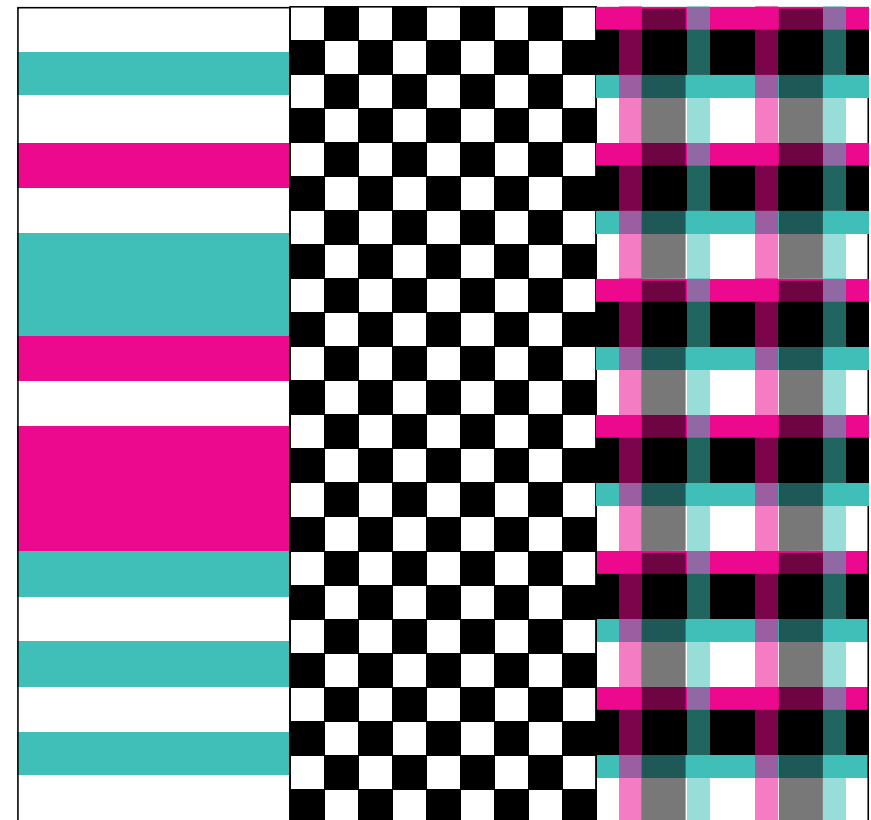
13th and 14th rnds: With D, rep last rnd twice.

15th rnd: With B, rep last rnd once. **Do not** fasten off.

16th rnd: Ch 1. Working from **left to right**, instead of from **right to left**, as usual, work 1 reverse sc in each sc around. Join with sl st to first sc. Fasten off.



REVERSE SC



Panel 1

Panel 1

Panel 3