



CROCHET | SKILL LEVEL: **INTERMEDIATE**

## ABBREVIATIONS

**Approx** =

Approximately

**Beg** = Begin(ning)(s)

**Ch** = Chain(s)

**Dc** = Double crochet

**Pat** = Pattern

**Rep** = Repeat

**RS** = Right side

**Rnd** = Round

**Sc** = Single crochet

**Sp(s)** = Space(s)

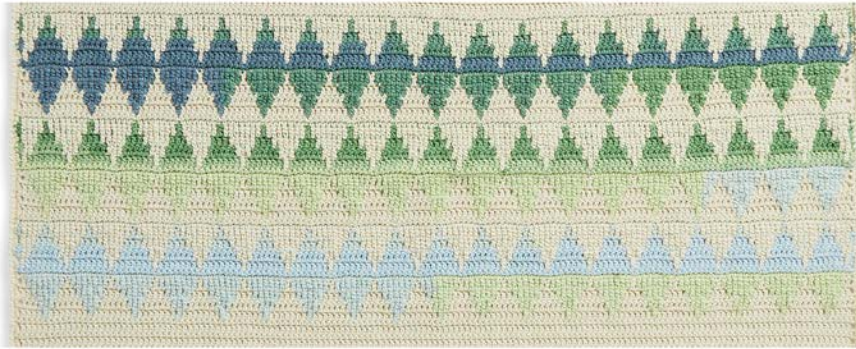
**St(s)** = Stitch(es)

**WS** = Wrong side

**W2dc** = Insert hook from front to back under first set of ch-sp 1 row below. (Yoh) twice and draw up a loop in indicated st. Yoh and draw through 2 loops on hook. Yoh and draw through 2 loops and ch-sp. (Yoh and draw through 2 loops on hook) twice.

**W3(4-5)dc** = Insert hook from front to back under first set of ch-sp 1 row below. [(Yoh) twice. Pull hook to front of work. Insert hook from front to back under next set of ch-sp row below] 1 (2-3) time(s). (Yoh) twice and draw up a loop in indicated st. (Yoh and draw through 2 loops on hook. Yoh and draw through 2 loops and ch-sp) 2 (3-4) times. (Yoh and draw through 2 loops on hook) twice.

**Yoh** = Yarn over hook



## Week 3 - Diamonds

See diagrams on pages 8-9.

**1st row:** (RS). With MC, ch 3. 1 dc in each of next 4 sc. \*Ch 1. Skip next sc. 1 dc in each of next 7 sc. Rep from \* to last 6 sc. Ch 1. Skip next sc. 1 dc in each of last 5 sc. Turn.

**2nd row:** Ch 3. 1 dc in each of next 3 sc. \*Ch 3. Skip next (dc, ch-1, dc). 1 dc in each of next 5 dc. Rep from \*, ending last rep with 1 dc in each of last 4 dc. Turn.

**3rd row:** Ch 3. 1 dc in each of next 2 dc. \*Ch 5. Skip next (dc, ch-3, dc). 1 dc in each of next 3 dc. Rep from \* to end of row. Turn.

**4th row:** Ch 3. 1 dc in next dc. \*Ch 7. Skip next (dc, ch-5, dc). 1 dc in next dc. Rep from \* to last dc. 1 dc in last dc. Join A. Turn.

**5th row:** With A, ch 1. 1 sc in each of first 2 dc. \*W2dc in skipped dc 2 rows below. W3dc in skipped dc 3 rows below. W4dc in skipped dc 4 rows below. W5dc in skipped dc 5 rows below. W4dc in skipped dc 4 rows below. W3dc in skipped dc 3 rows below. W2dc in skipped dc 2 rows below. 1 sc in next dc. Rep from \* to last dc. 1 sc in last dc. Turn.

**6th row:** Ch 1. 1 sc in each st to end of row. Turn.



**7th row:** With A, ch 2 (**does not** count as st). 1 dc in first sc. \*Ch 1. Skip next sc. 1 dc in each of next 7 sc. Rep from \* to last 2 sc. Ch 1. Skip next sc. 1 dc in last sc. Turn.

**8th row:** Ch 2 (**does not** count as st). 1 dc in first dc. Ch 2. Skip next ch-1 sp and dc. \*1 dc in each of next 5 dc. Ch 3. Skip next (dc, ch-1 sp, dc). Rep from \*, ending with: 1 dc in each of next 5 dc. Ch 2. Skip next dc and ch-1 sp. 1 dc in last dc. Turn.

**9th row:** Ch 2 (**does not** count as st). 1 dc in first dc. Ch 3. Skip next ch-2 sp and dc. \*1 dc in each of next 3 dc. Ch 5. Skip next (dc, ch-1 sp, dc). Rep from \*, ending with: 1 dc in each of next 3 dc. Skip next dc and ch-2 sp. 1 dc in last dc. Turn.

**10th row:** Ch 2 (**does not** count as st). 1 dc in first dc. Ch 4. Skip next ch-3 sp and dc. \*1 dc in next dc. Ch 7. Skip next (dc, ch-5 sp, dc). Rep from \*, ending with 1 dc in next dc. Ch 4. Skip next dc and ch-3 sp. 1 dc in last dc. Join MC. Turn.

**11th row:** With MC, ch 1. 1 sc in first sc. \*W5dc in skipped sc 5 rows below. W4dc in skipped dc 4 rows below. W3dc in skipped dc 3 rows below. W2dc in skipped dc 2 rows below. 1 sc in next dc. W2dc in skipped dc 2 rows below. W3dc in skipped dc 3 rows below. W4dc in skipped dc 4 rows below. Rep from \*, ending with: W5dc in skipped sc 5 rows below. 1 sc in last dc. Turn.

**12th row:** Ch 1. 1 sc in each st to end of row. Turn.

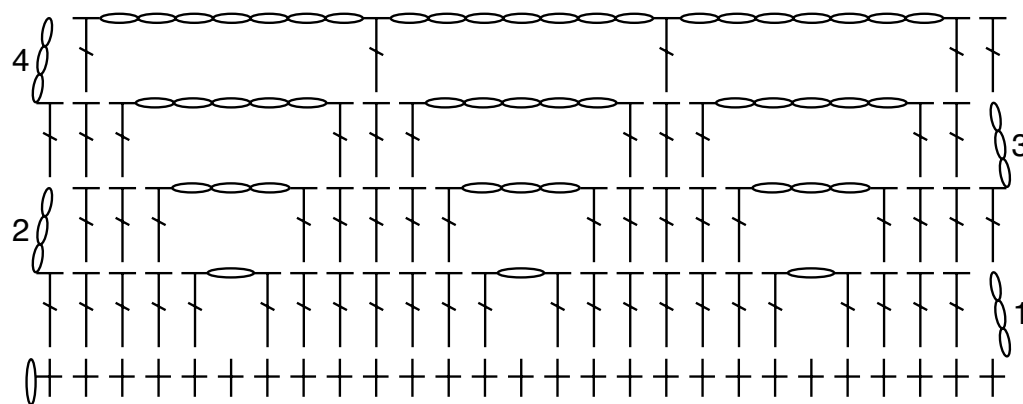
**13th to 36th rows:** Rep 1st to 12th rows twice more.

**37th row:** (RS). With MC, ch 3. 1 dc in each st to end of row. Turn.

**38th row:** Ch 1. 1 sc in each dc to end of row. Turn.

**39th and 40th rows:** Rep last 2 rows once more.

Week 3 Complete.



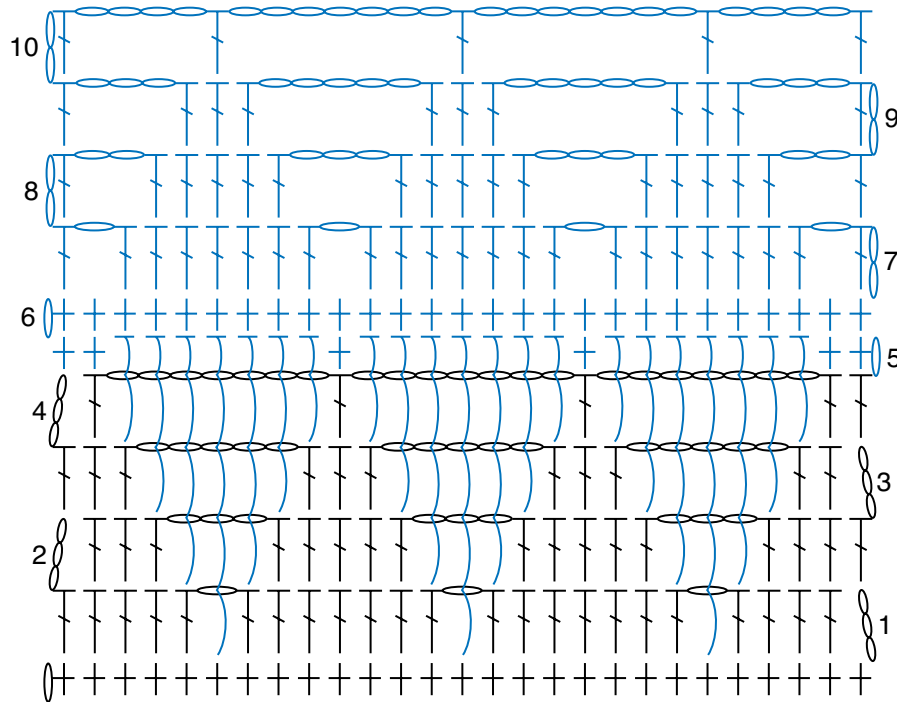
REDUCED SAMPLE OF DIAMOND PATTERN  
1st through 4th row

STITCH KEY

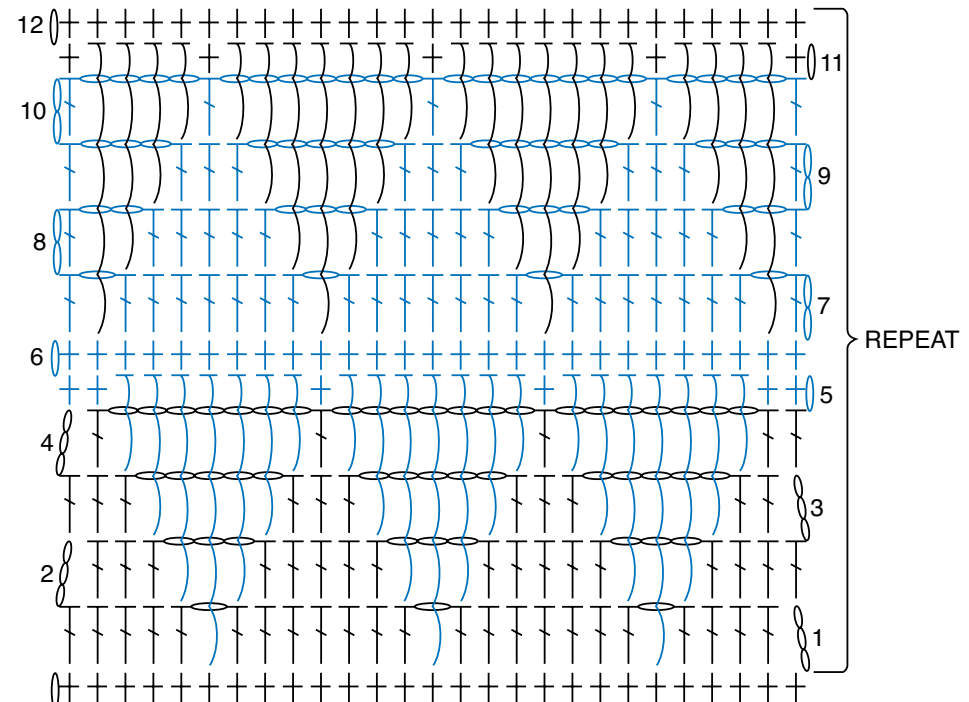
○ = chain (ch)

⊥ = single crochet (sc)

⌋ = double crochet (dc)



REDUCED SAMPLE OF DIAMOND PATTERN  
1st through 10th row



REDUCED SAMPLE OF DIAMOND PATTERN  
1st through 12th row

