

# Patons® KROY SOCKS



**PATONS® KROY SOCKS  
CROCHET SHAWL**

**MEASUREMENTS**

Approx 29 x 66 ins [73.5 x 167.5 cm] (excluding edging)

**MATERIALS**

**Patons® Kroy Socks** (50 g/1.75 oz; 152 m/166 yds) (55008 Muslin) **7 balls**

Size 4 mm (U.S. G or 6) crochet hook **or size needed to obtain tension.**

**TENSION**

19 sc and 21 rows = 4 ins [10 cm].

**INSTRUCTIONS**

Ch 142 loosely.

**1st row:** (WS). 1 sc in 2nd ch from hook. 1 sc in next ch. \*(Ch 3. Miss next 3 ch. 1 sc in next ch) twice. 1 sc in each of next 2 ch. Rep from \* to last 9 ch. (Ch 3. Miss next 3 ch. 1 sc in next ch) twice. 1 sc in last ch. Turn.

**2nd row:** Ch 8 (counts as 1 tr and ch 4). (1 sc. Ch 7. 1 sc) in first sc. \*Ch 5. Miss next sc. 1 dc in next sc. Ch 5. Miss next sc. [(1 sc. Ch 7) 3 times. 1 sc] all in next sc. Rep from \* across, ending with (1 sc. Ch 7. 1 sc. Ch 4. 1 tr) all in last sc. Turn.

**3rd row:** Ch 1. 1 sc in first tr. Ch 3. 1 sc in next ch-7 loop. \*Ch 1. 1 sc in next dc. Ch 1. (1 sc in next ch-7 loop. Ch 3) twice. 1 sc in next ch-7 loop. Rep from \* across, ending with 1 sc in last dc. Ch 1. 1 sc in next ch-7 loop. Ch 3. 1 sc in 4th ch of ch 8. Turn.

**4th row:** Ch 8 (counts as dc and ch 5). \*Miss next sc. [(1 sc. Ch 7) 3 times. 1 sc] all in next sc. Ch 5. Miss next sc. 1 dc in next sc. Ch 5. Rep from \* across, ending with ch 5. Miss next sc. 1 dc in last sc. Turn.

**5th row:** Ch 1. 1 sc in first dc. \*Ch 1. (1 sc in next ch-7 loop. Ch 3) twice. 1 sc in next ch-7 loop. Ch 1. 1 sc in next dc. Rep from \* across, ending with 1 sc in 3rd ch of ch 8. Turn.

Rep 2nd to 5th rows for pat until Shawl measures approx 66 ins [167.5 cm], ending with a 5th row of pat.

**Final row:** (RS). Ch 1. 1 sc in first sc. 1 sc in next sc. \*(Ch 3. 1 sc in next sc) twice. 1 sc in each of next 2 sc. Rep from \* across, ending with 1 sc in last sc. Turn.

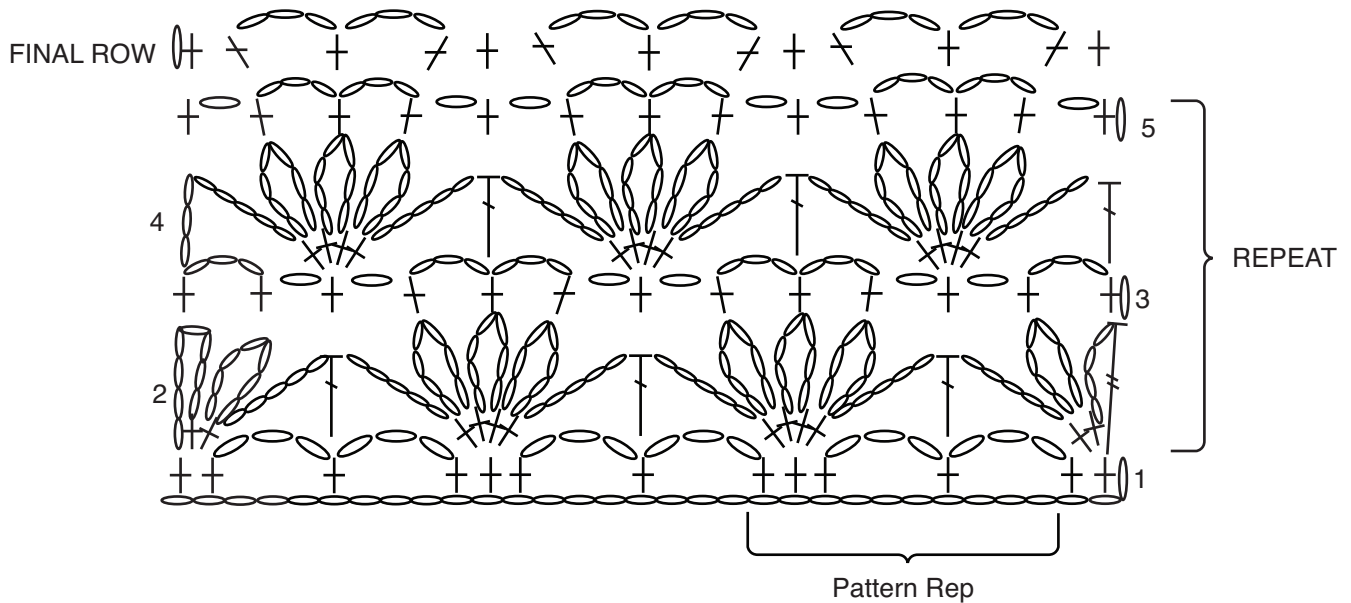
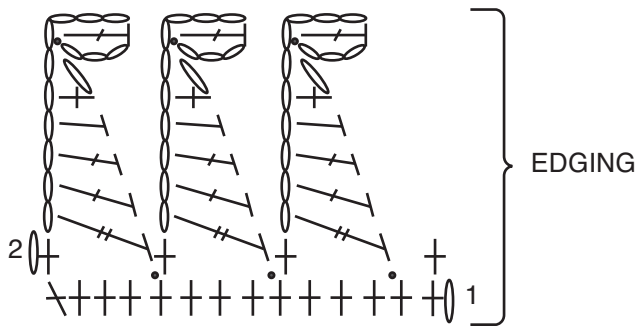
**Edging: 1st row:** Ch 1. 1 sc in first sc. Miss next sc. \*(3 sc in next ch-3 sp. 1 sc in next sc) twice. 1 sc in each of next 2 sc. Rep from \* across to last 2 ch-3 sps. (3 sc in next ch-3 sp. Miss next sc) twice. 1 sc in next sc. 2 sc in last sc. 140 sc. Turn.

**2nd row:** Ch 1. 1 sc in first sc. \*Ch 10. (1 dc. Ch 3. Sl st) in 4th ch from hook. Ch 1. Miss next ch. 1 sc in next ch. 1 hdc in next ch. 1 dc in each of next 2 ch. 1 tr in next ch. Miss next 3 sc. Sl st in next sc. Rep from \* across, ending with 1 sc in last sc. Fasten off.

**Opposite Edging: 1st row:** (WS). Join yarn with sl st to rem loop of foundation row at corner. Ch 1. 1 sc in first sc. Miss next sc. \*(3 sc in next ch-3 sp. 1 sc in next sc) twice. 1 sc in each of next 2 sc. Rep from \* to last 2 ch-3 sps. (3 sc in next ch-3 sp. Miss next sc) twice. 1 sc in next sc. 2 sc in last sc. 140 sc. Turn.

**2nd row:** Ch 1. 1 sc in first sc. \*Ch 10. (1 dc. Ch 3. Sl st) in 4th ch from hook. Ch 1. Miss next ch. 1 sc in next ch. 1 hdc in next ch. 1 dc in each of next 2 ch. 1 tr in next ch. Miss next 3 sc. Sl st in next sc. Rep from \* across, ending with 1 sc in last sc. Fasten off.





**Key**

- = slip stitch (sl st)
- = chain (ch)
- ⊥ = single crochet (sc)
- ┘ = half double crochet (hdc)
- ┘ = double crochet (dc)
- ┘ = treble crochet (tr)

