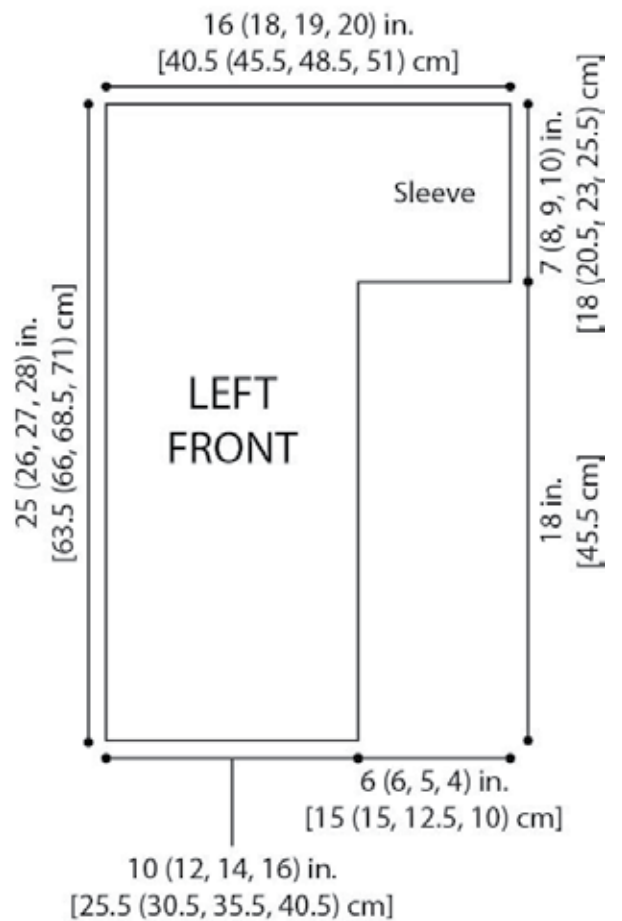
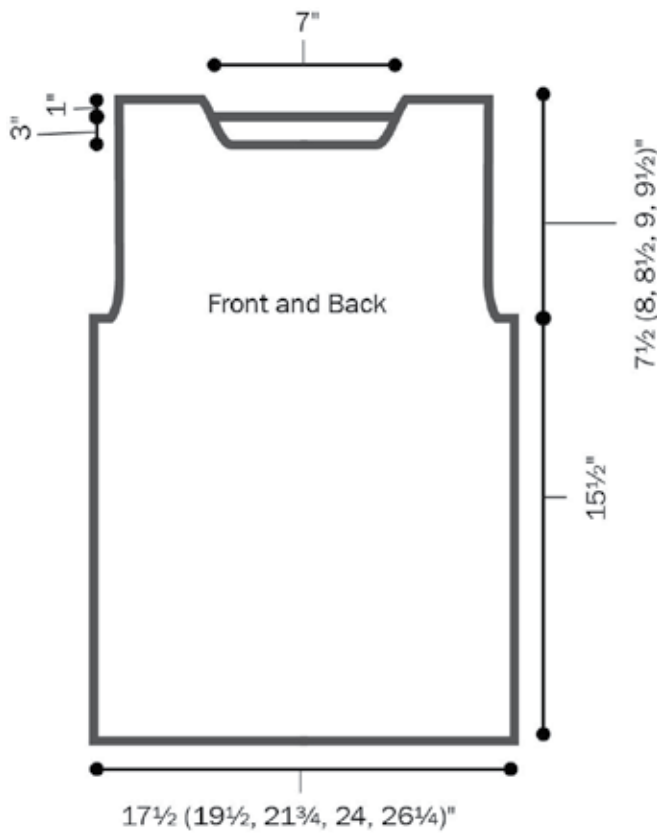
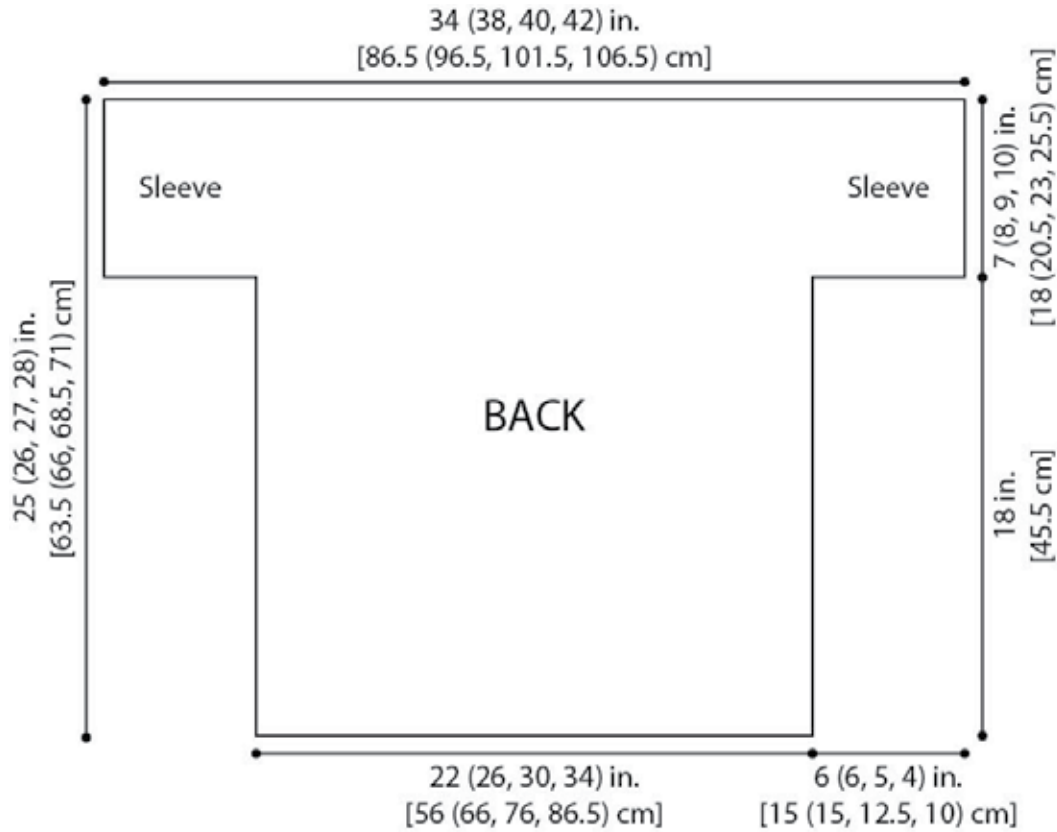
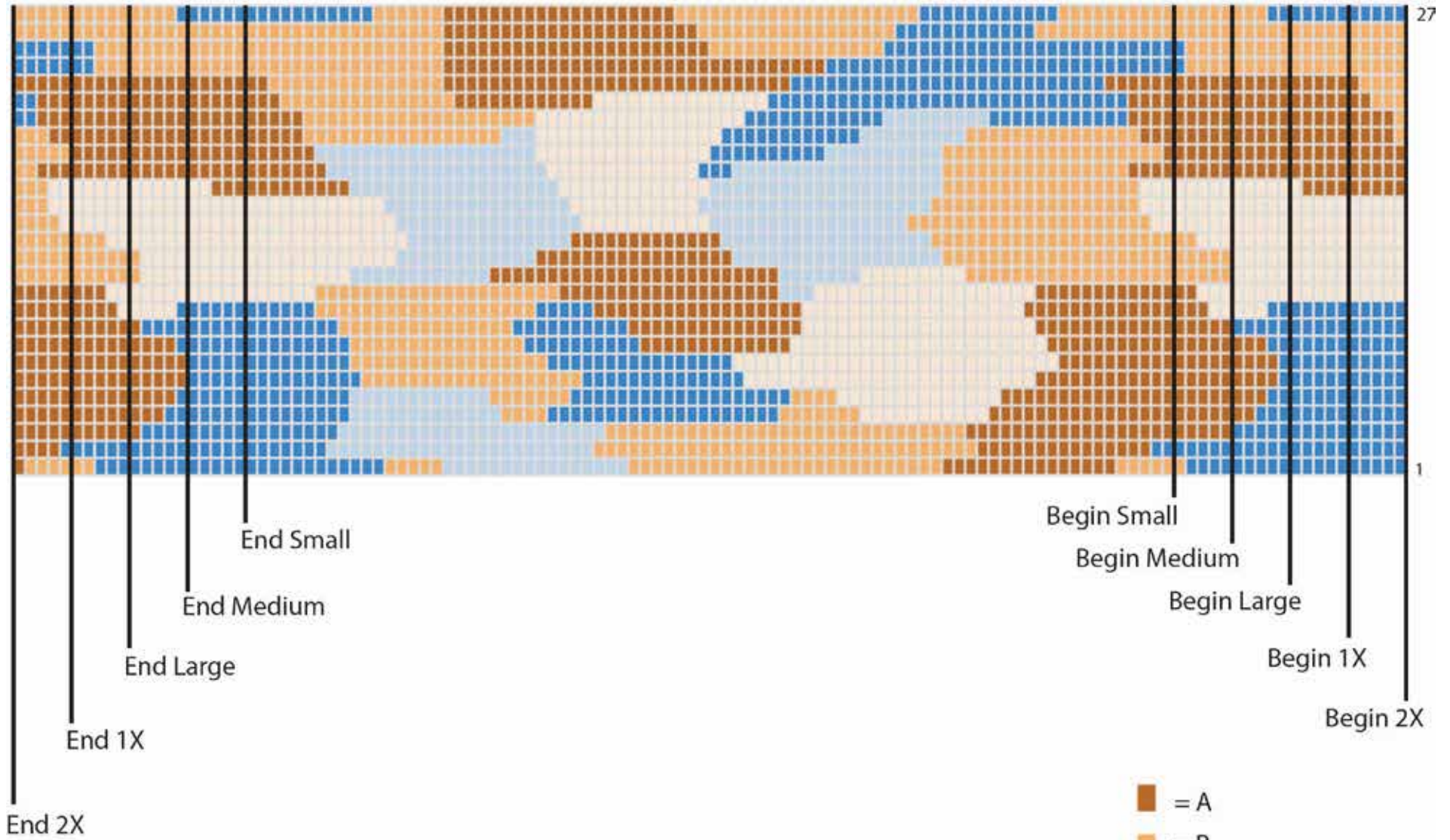


Coboo Crochet Modern Camo Top



Coboo Crochet Modern Camo Top

Colorwork Pattern

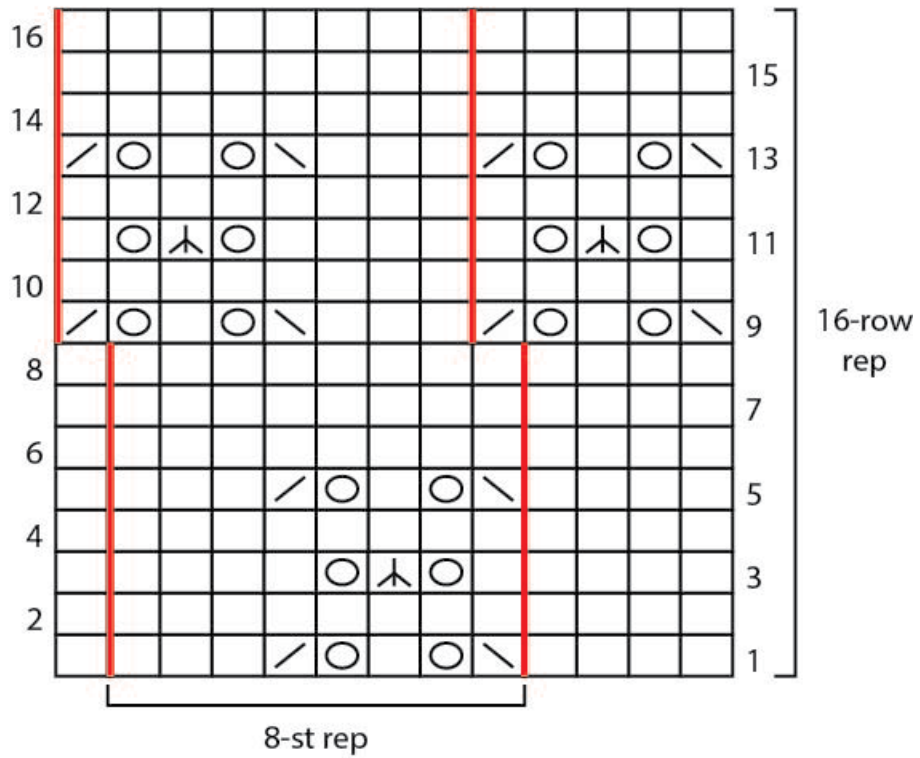


Note: Each square of chart represents one hdc or turning-ch-2.

- = A
- = B
- = C
- = D
- = E

Coboo Crochet Modern Camo Top

Flower Lace



KEY

- knit on RS, purl on WS
- yarn over
- k2tog (knit 2 stitches together)
- ssk (slip, slip, knit)
- s2kp (slip 2, k1, pass over)