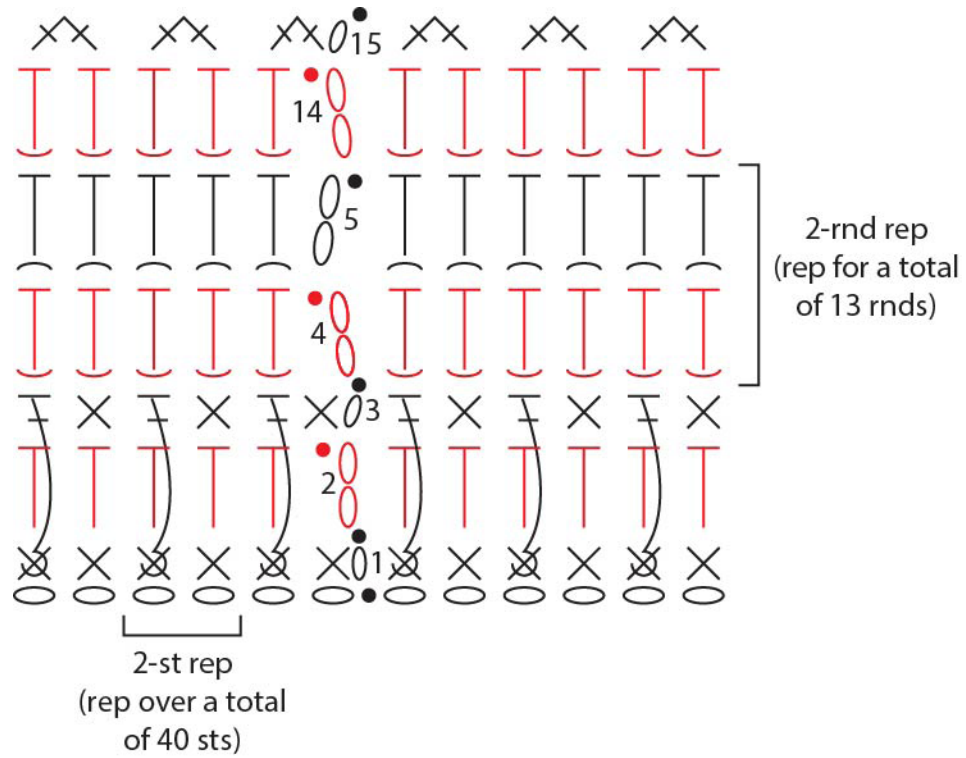


Oslo Hat



KEY

- = slip stitch (sl st)
- = chain (ch)
- × = single crochet (sc)
- ┆ = half double crochet (hdc)
- ┆ = half double crochet in back loop only (hdc-blo)
- ┆ = half double crochet in front loop only (hdc-flo)
- ┆ = front post double crochet (FPdc)
- ┆ = single crochet 2 together (sc2tog)