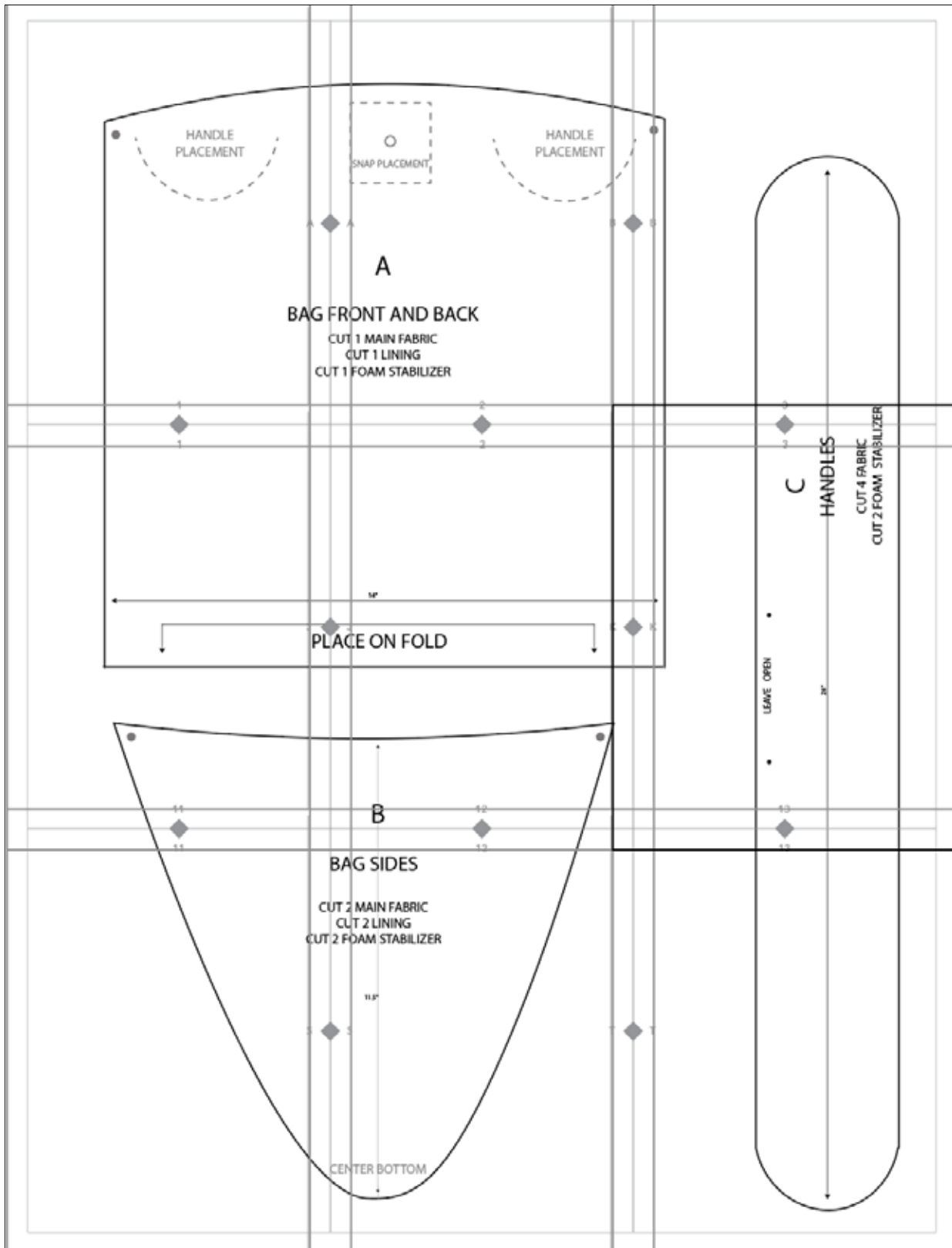


# Shopper Tote

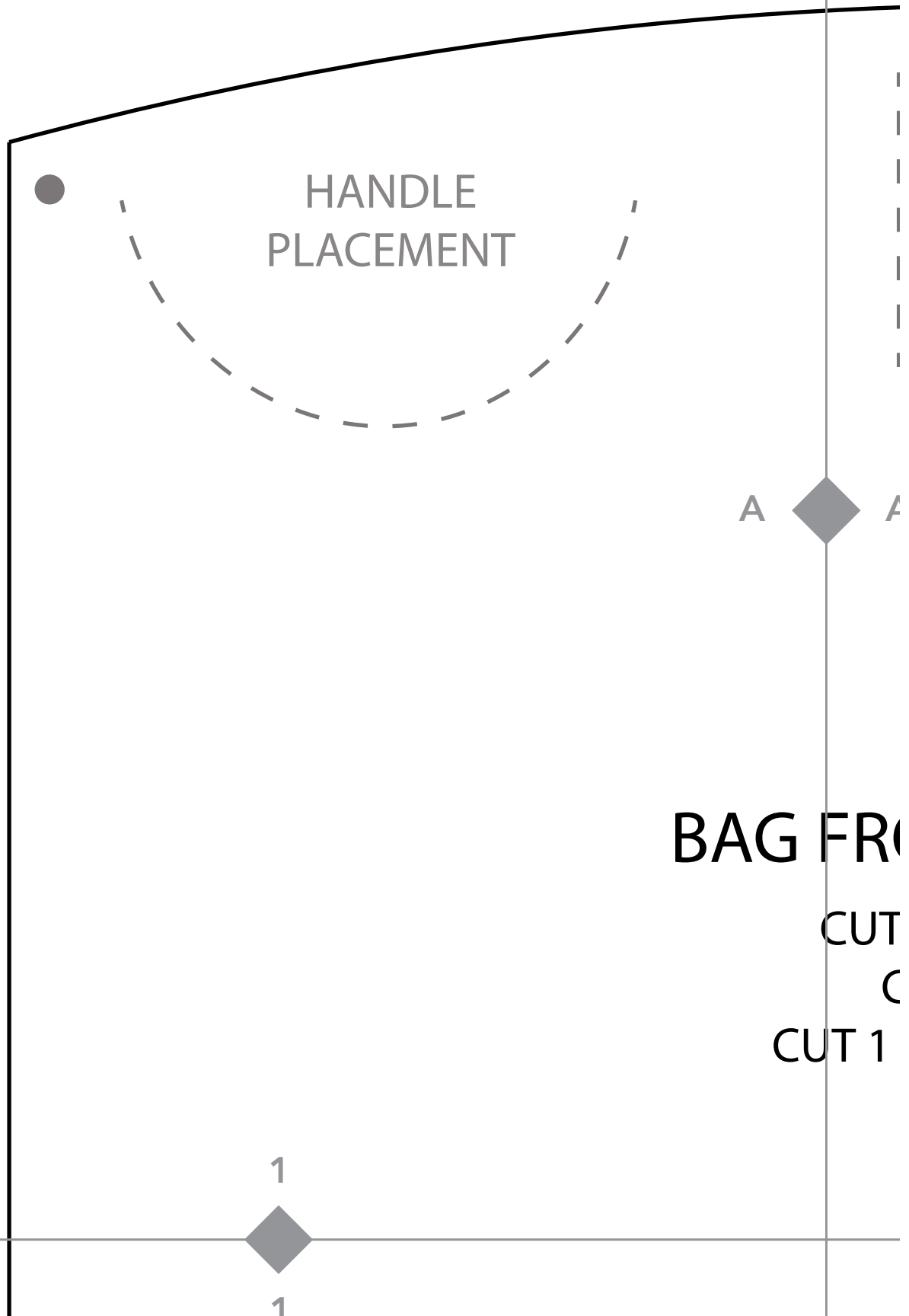
## TEMPLATE DIRECTIONS:

Print each page, piece the template together by lining up the corresponding letters & numbers, then tape.



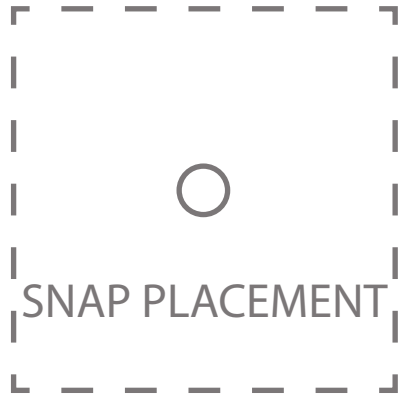
Shopper Tote (TO SCALE)

JOANN



Shopper Tote (TO SCALE)

JOANN



HANDLE  
PLACEMENT



A  A

B  B

A

# CUT FRONT AND BACK

CUT 1 MAIN FABRIC

CUT 1 LINING

CUT 1 FOAM STABILIZER

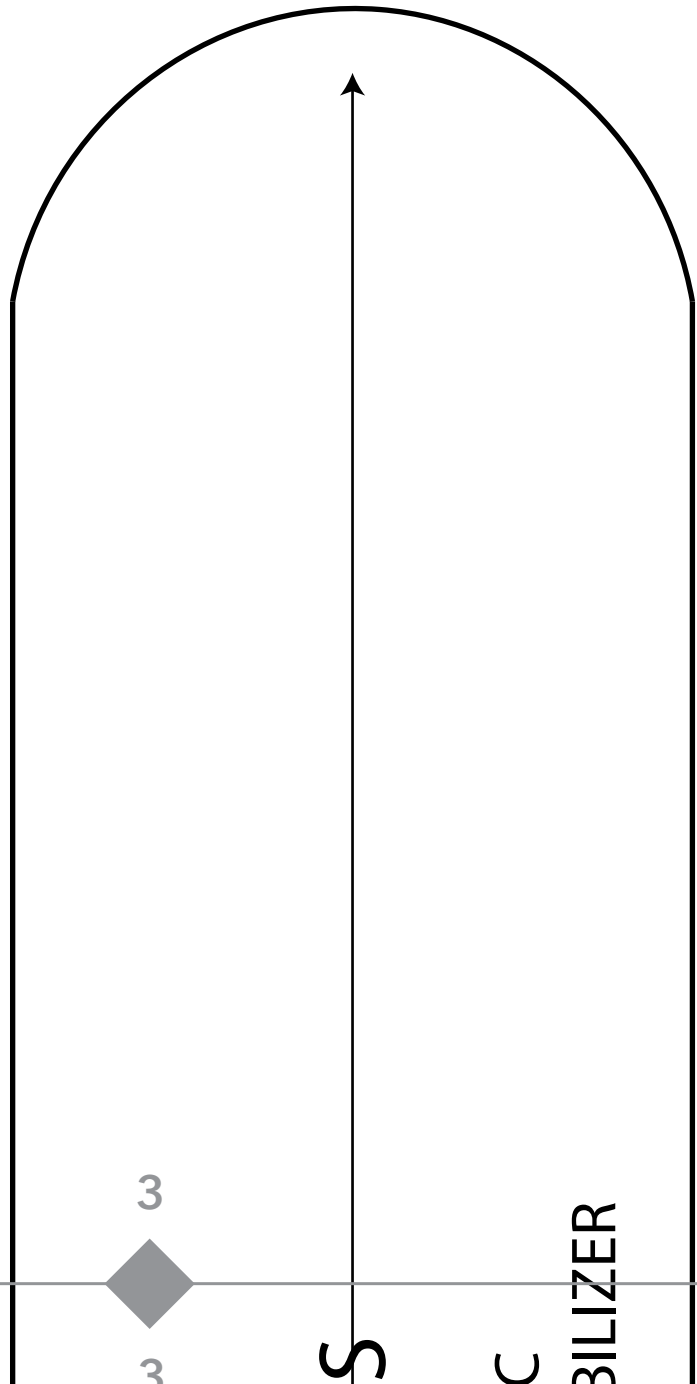
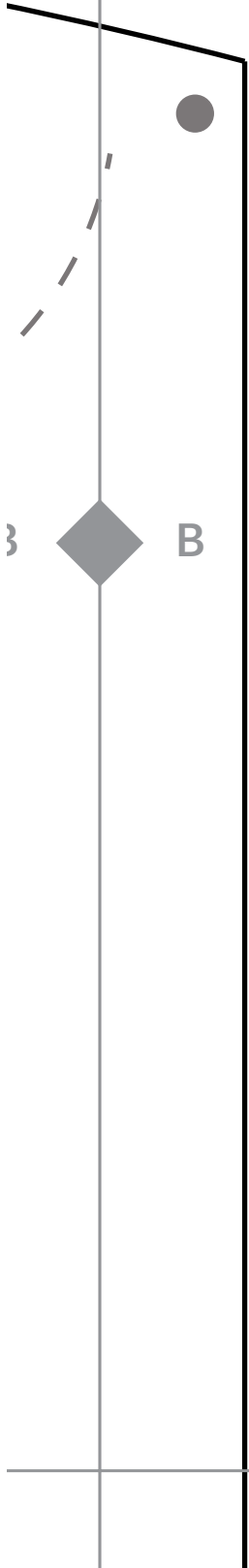
2



2

Shopper Tote (TO SCALE)

JOANN



Shopper Tote (TO SCALE)

JOANN

1



PLAC



11



11

Shopper Tote (TO SCALE)

JOANN

2  
2

14"

J

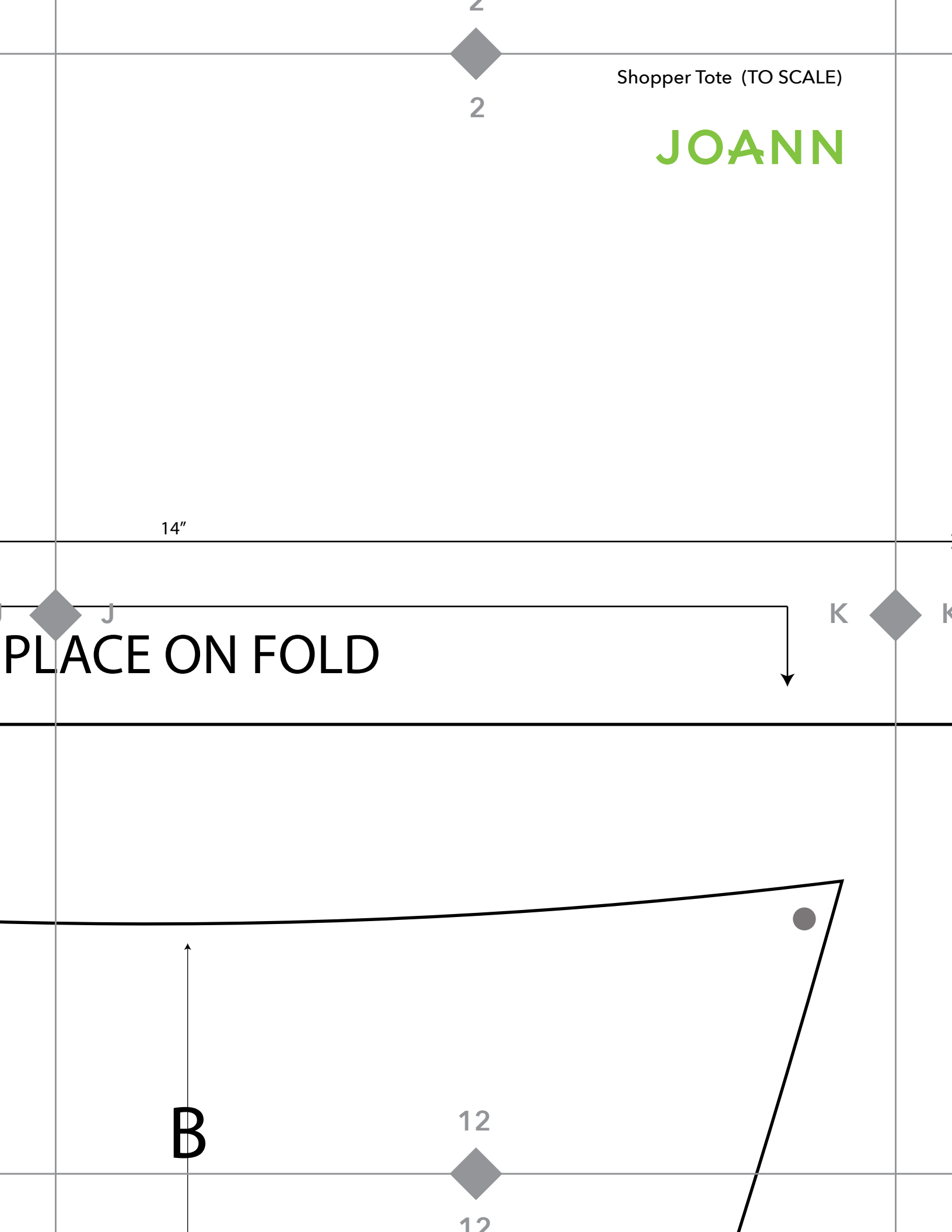
K

PLACE ON FOLD

B

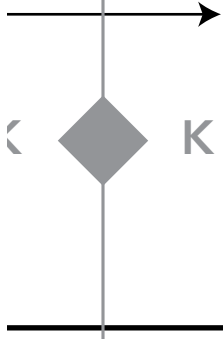
12

12



Shopper Tote (TO SCALE)

**JOANN**



LEAVE OPEN



13

13



3

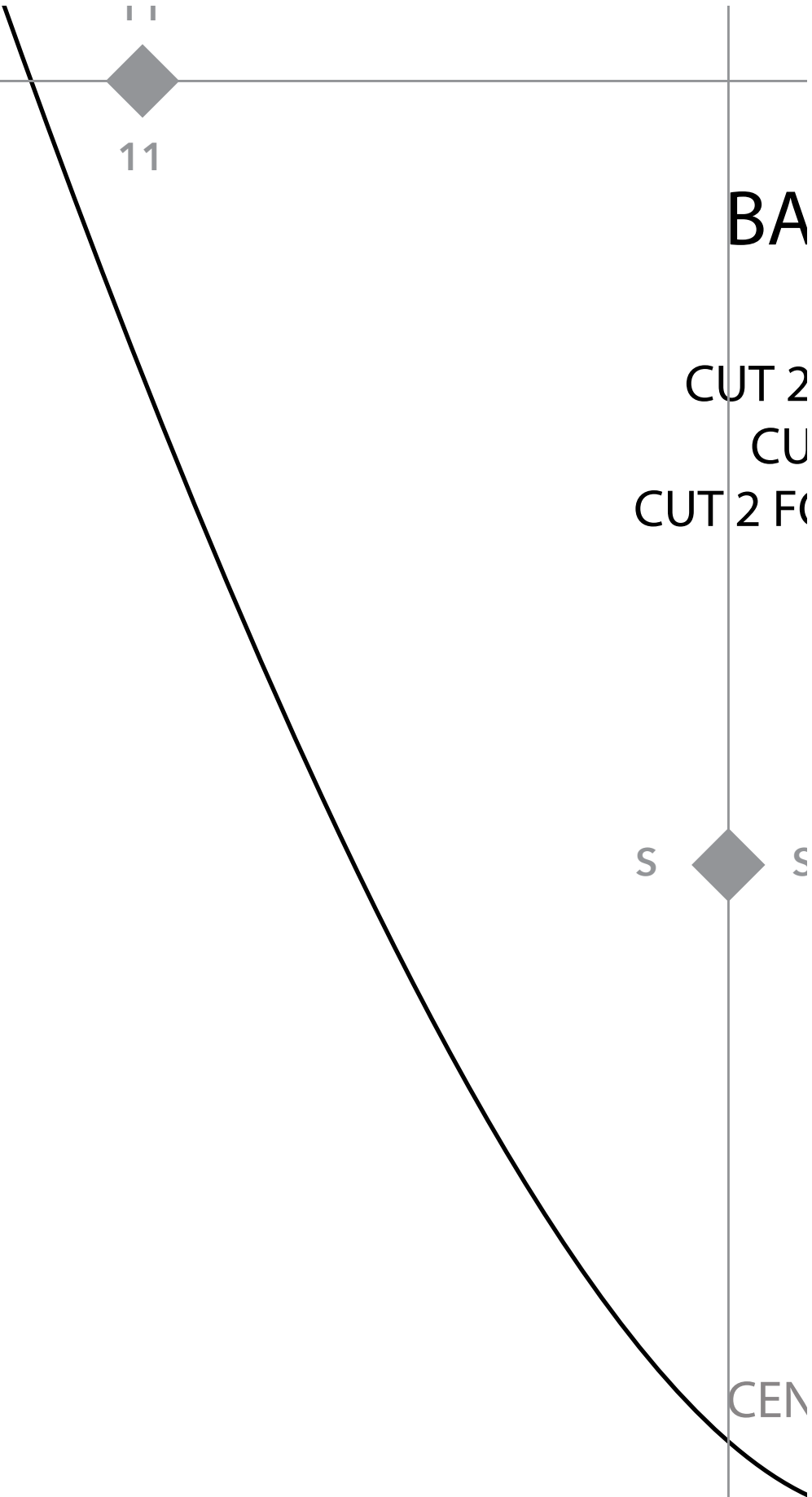
C

26"

**HANDLES**

CUT 4 FABRIC

CUT 2 FOAM STABILIZER



Shopper Tote (TO SCALE)

**JOANN**



B

12



12

# BAG SIDES

CUT 2 MAIN FABRIC

CUT 2 LINING

CUT 2 FOAM STABILIZER

11.5"



S

T



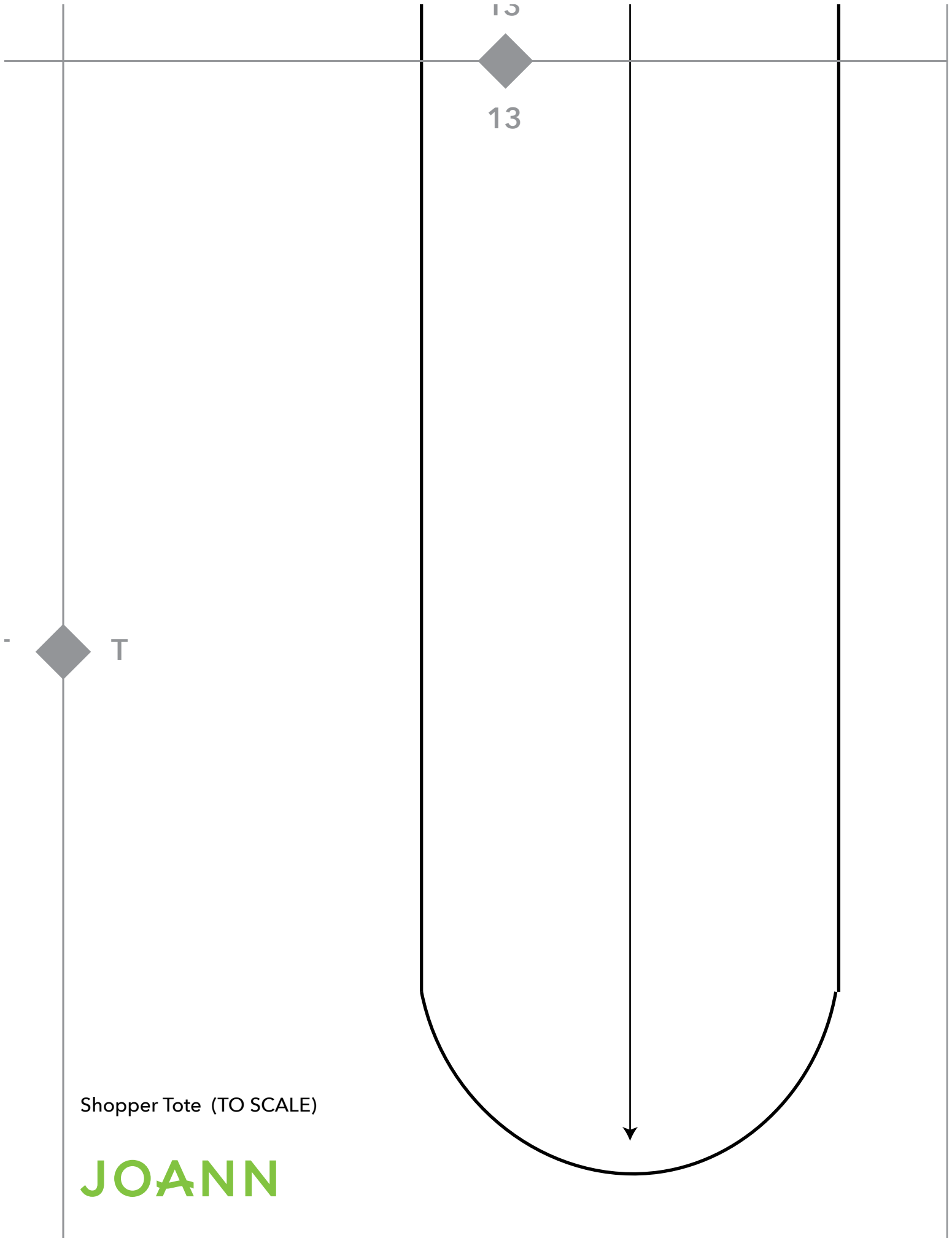
T

CENTER BOTTOM



Shopper Tote (TO SCALE)

**JOANN**



13

13

T

Shopper Tote (TO SCALE)

JOANN