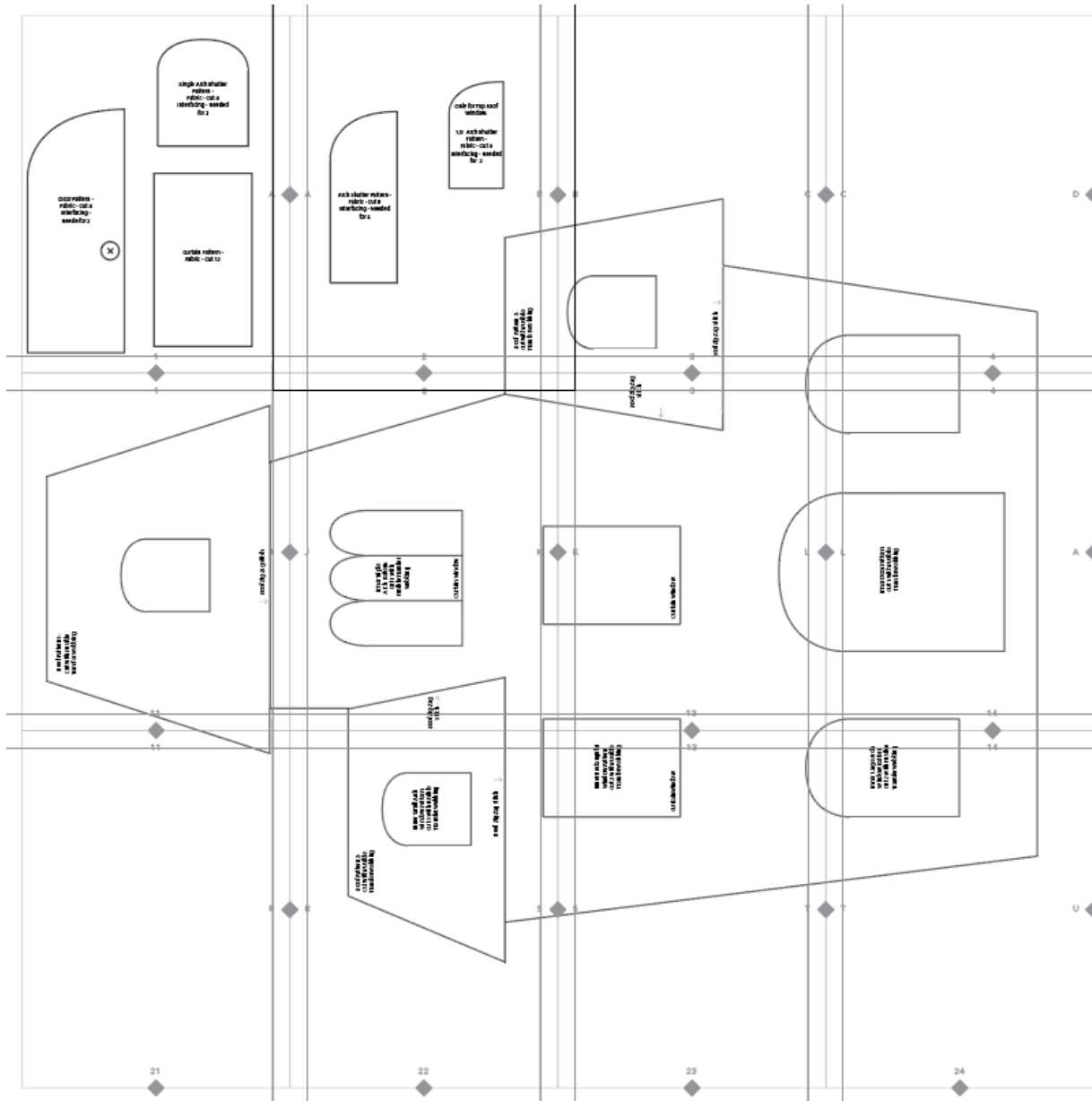


Haunted House Pillow

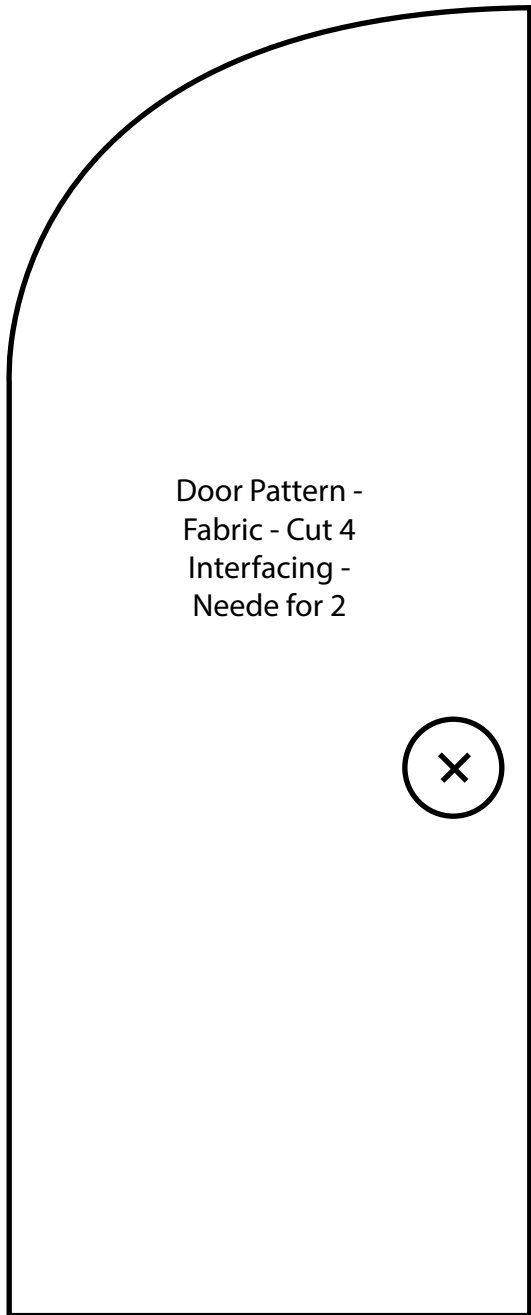
TEMPLATE DIRECTIONS:

Print each page, piece the template together by lining up the corresponding letters & numbers, then tape.

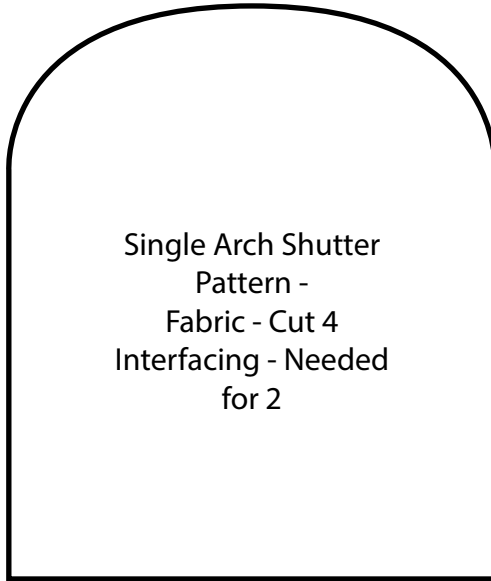


Haunted House Pillow (TO SCALE)

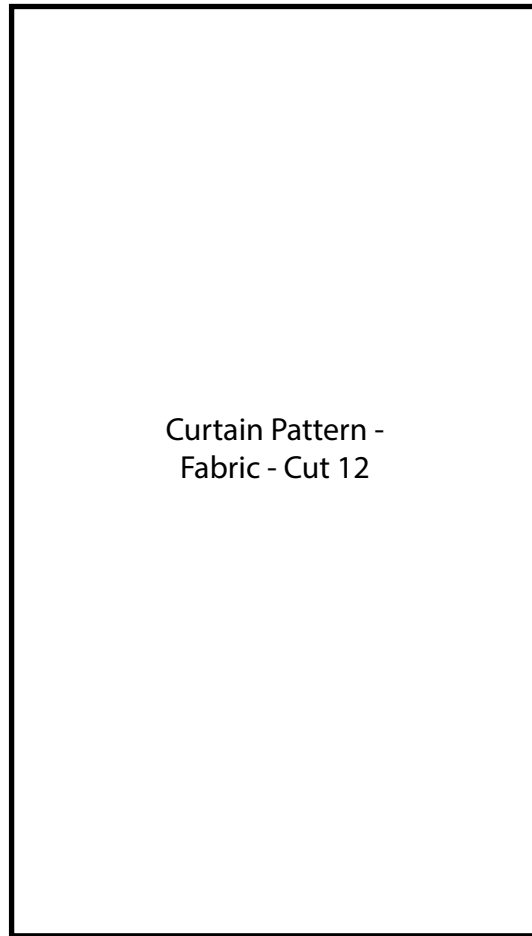
JOANN



Door Pattern -
Fabric - Cut 4
Interfacing -
Neede for 2



Single Arch Shutter
Pattern -
Fabric - Cut 4
Interfacing - Needed
for 2



Curtain Pattern -
Fabric - Cut 12

A



A

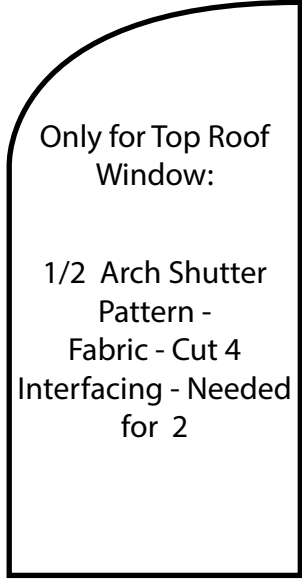
1



1

Haunted House Pillow (TO SCALE)

JOANN



A

A

B

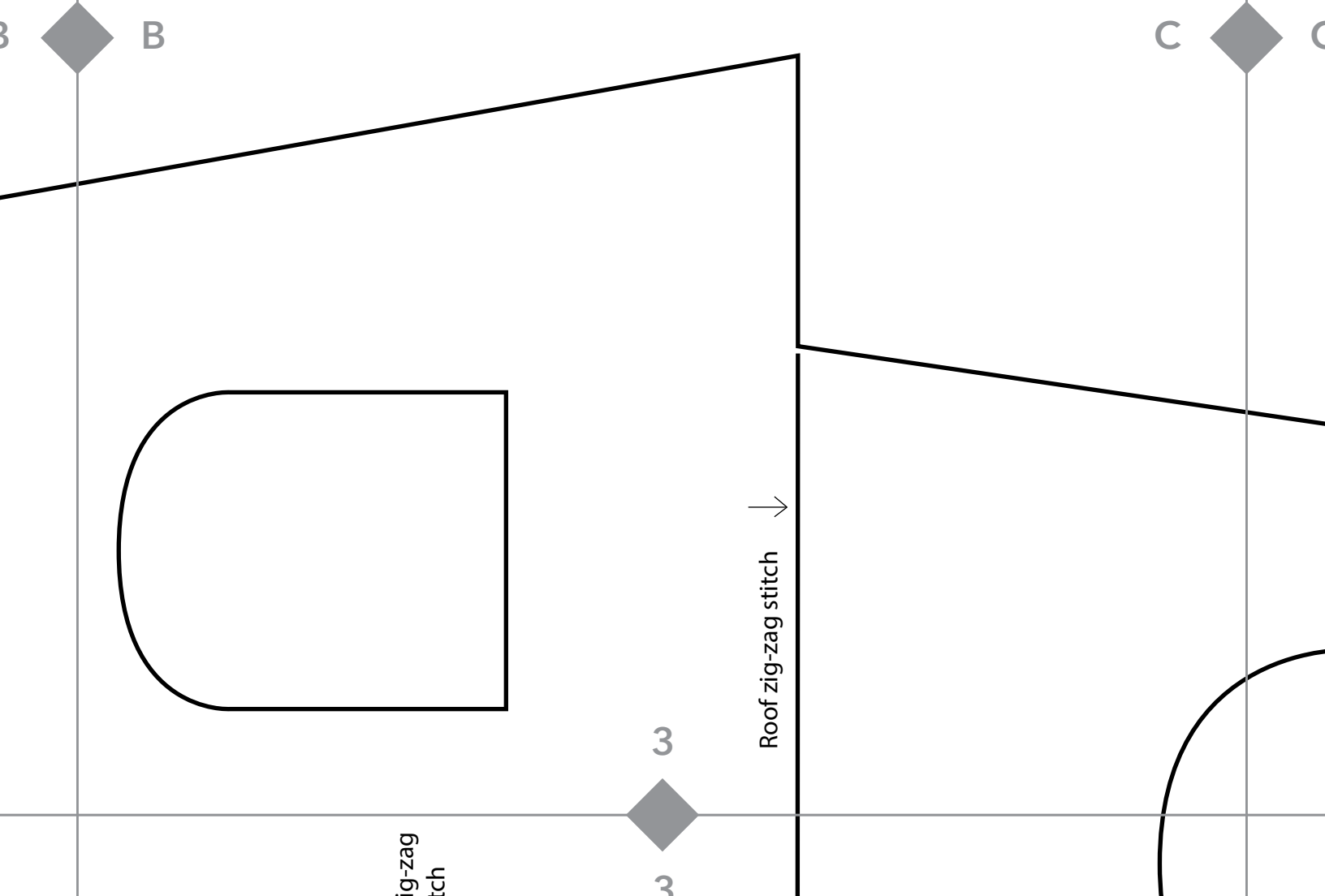
B

2

2

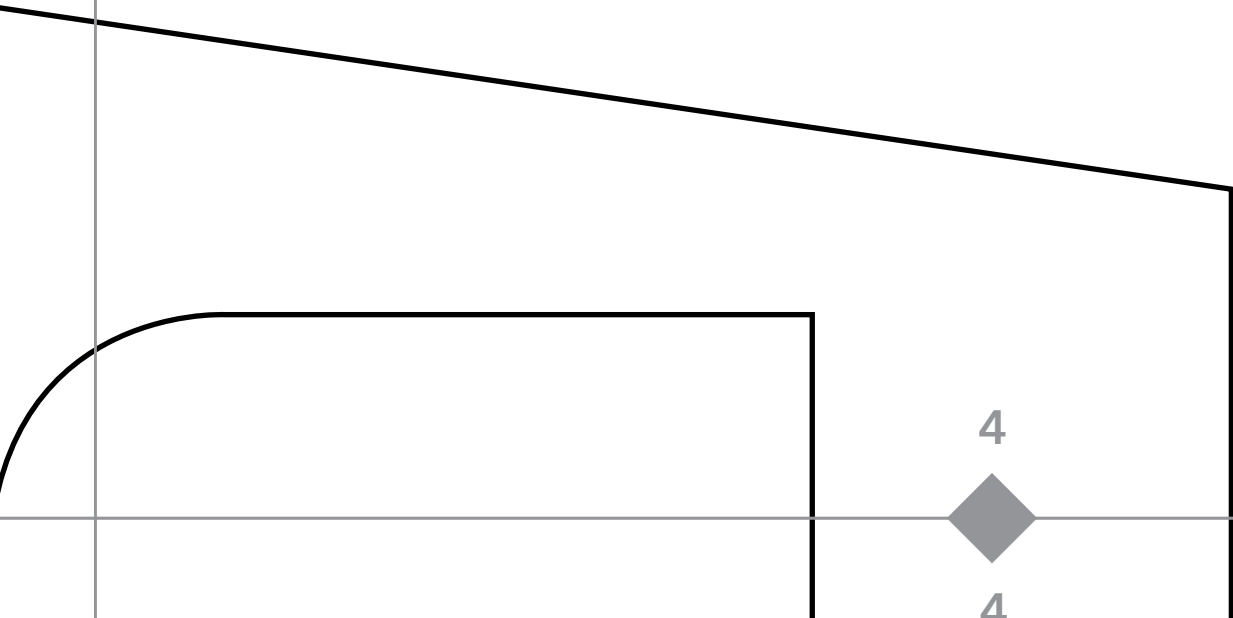
Haunted House Pillow (TO SCALE)

JOANN



Haunted House Pillow (TO SCALE)

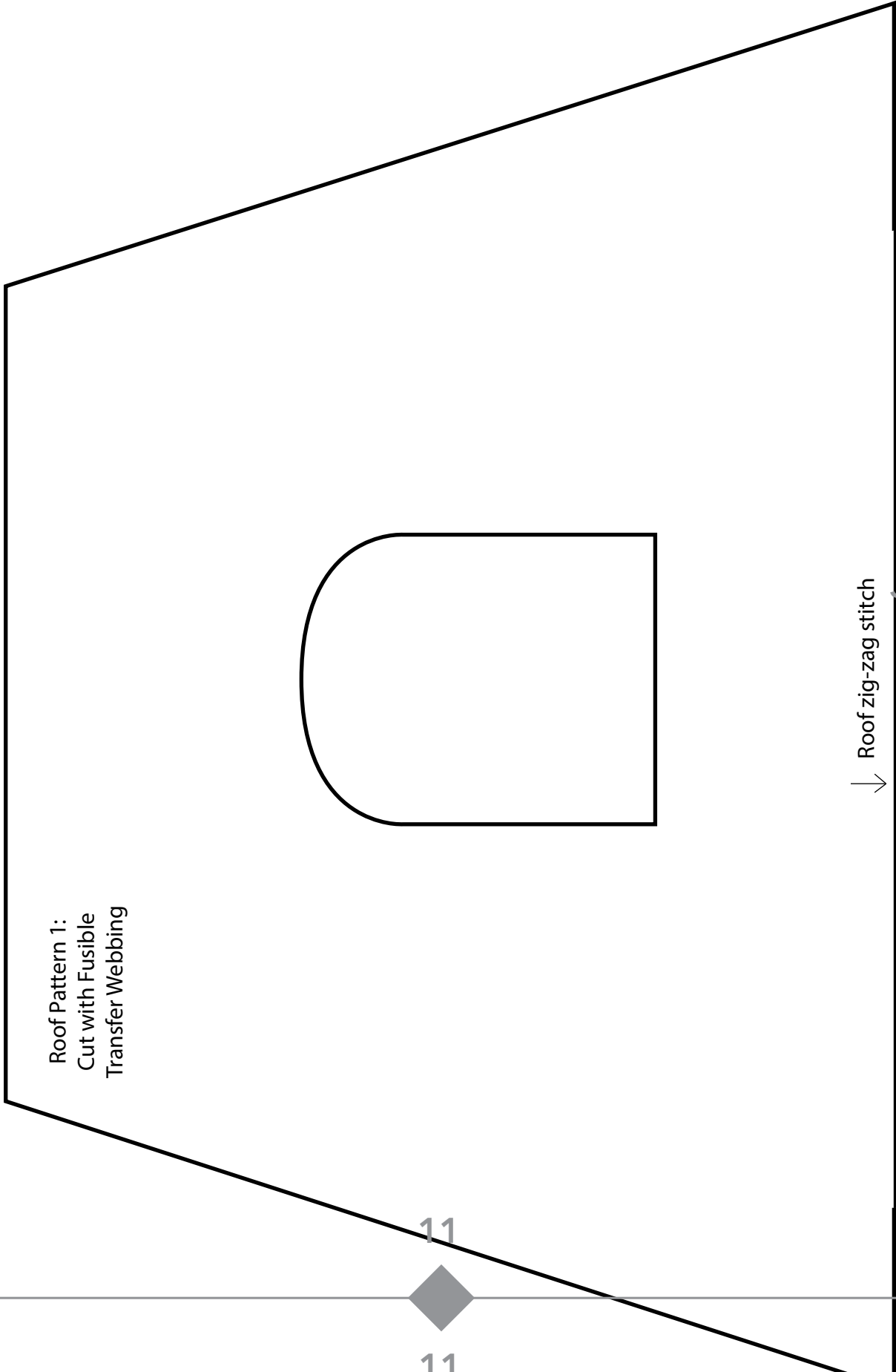
JOANN



Haunted House Pillow (TO SCALE)

JOANN

1



Roof Pattern 1:
Cut with Fusible
Transfer Webbing

↓ Roof zig-zag stitch

11

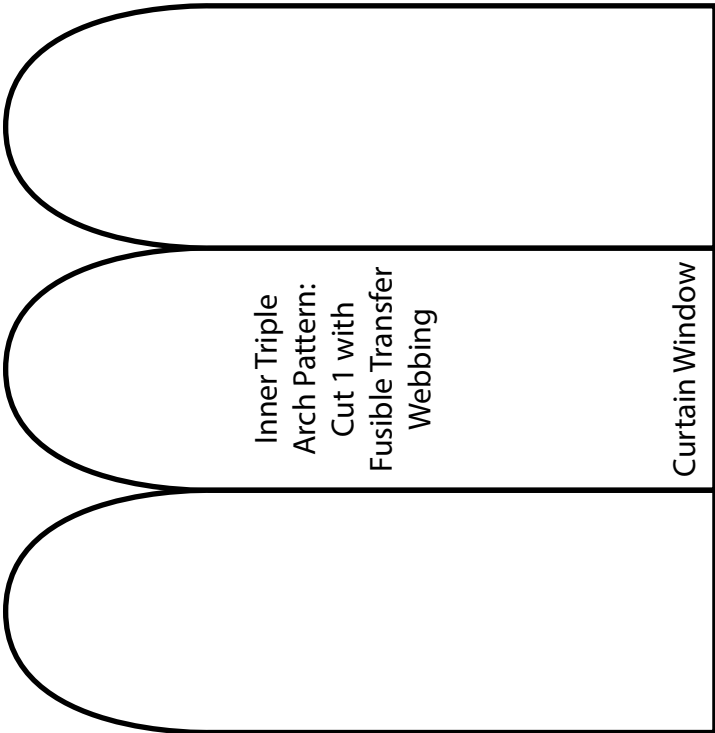
11



Haunted House Pillow (TO SCALE)

JOANN

2
2



Inner Triple Arch Pattern:
Cut 1 with
Fusible Transfer
Webbing

Curtain Window

Roof zig-zag
stitch →

K

K

Roof zig-zag
stitch



3

Haunted House Pillow (TO SCALE)

JOANN

K

Curtain Window

13

13

4



4

Haunted House Pillow (TO SCALE)

JOANN

Inner Door Pattern:
Cut 1 with Fusible
Transfer Webbing

L

A



A

14



14

14

11



11

R



R

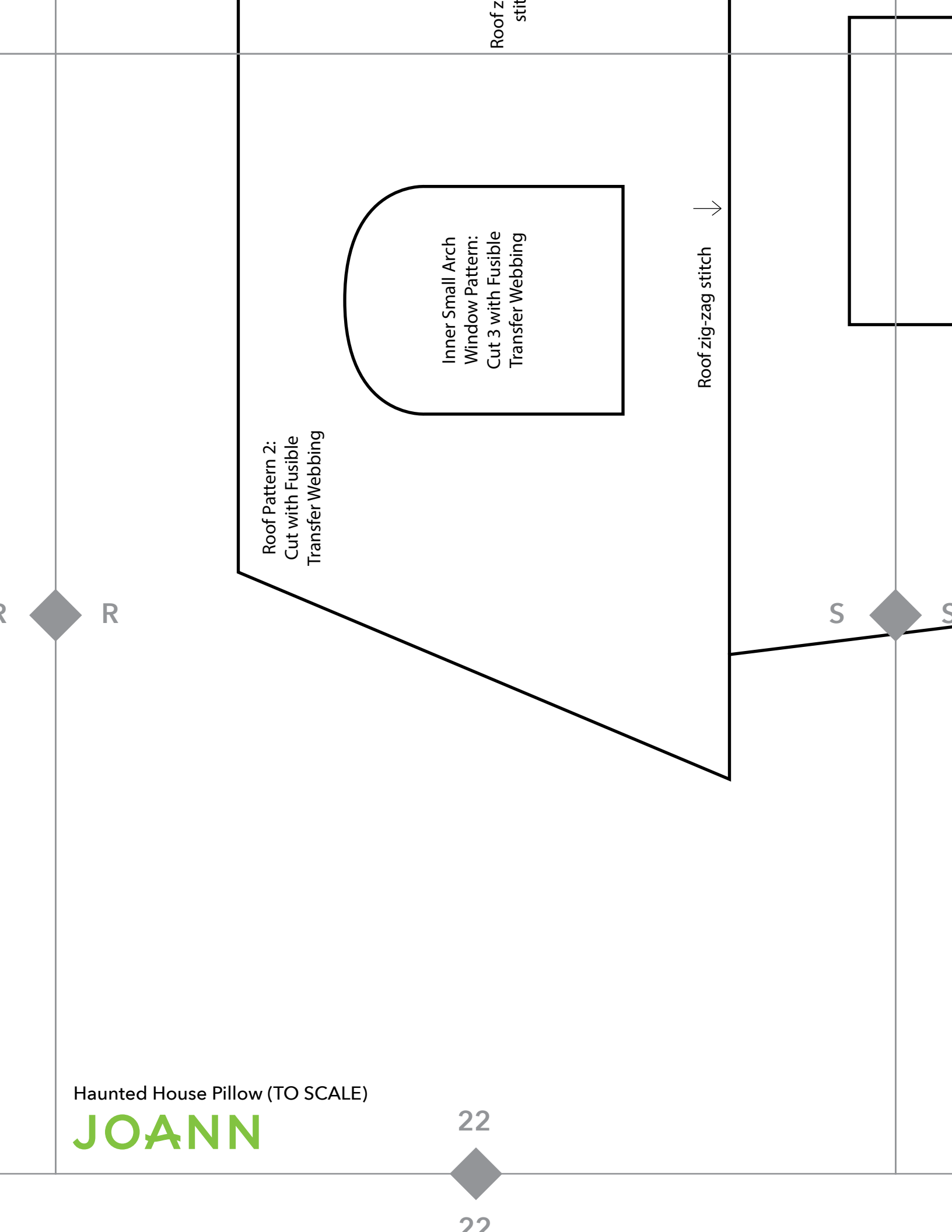
Haunted House Pillow (TO SCALE)

JOANN

21



21



Roof z
stitch

Inner Small Arch
Window Pattern:
Cut 3 with Fusible
Transfer Webbing

Roof Pattern 2:
Cut with Fusible
Transfer Webbing

Roof zig-zag stitch ↓

R

S

Haunted House Pillow (TO SCALE)

JOANN

22

22

Inner Rectangular
Window Pattern:
Cut 2 with Fusible
Transfer Webbing

Curtain Window

13

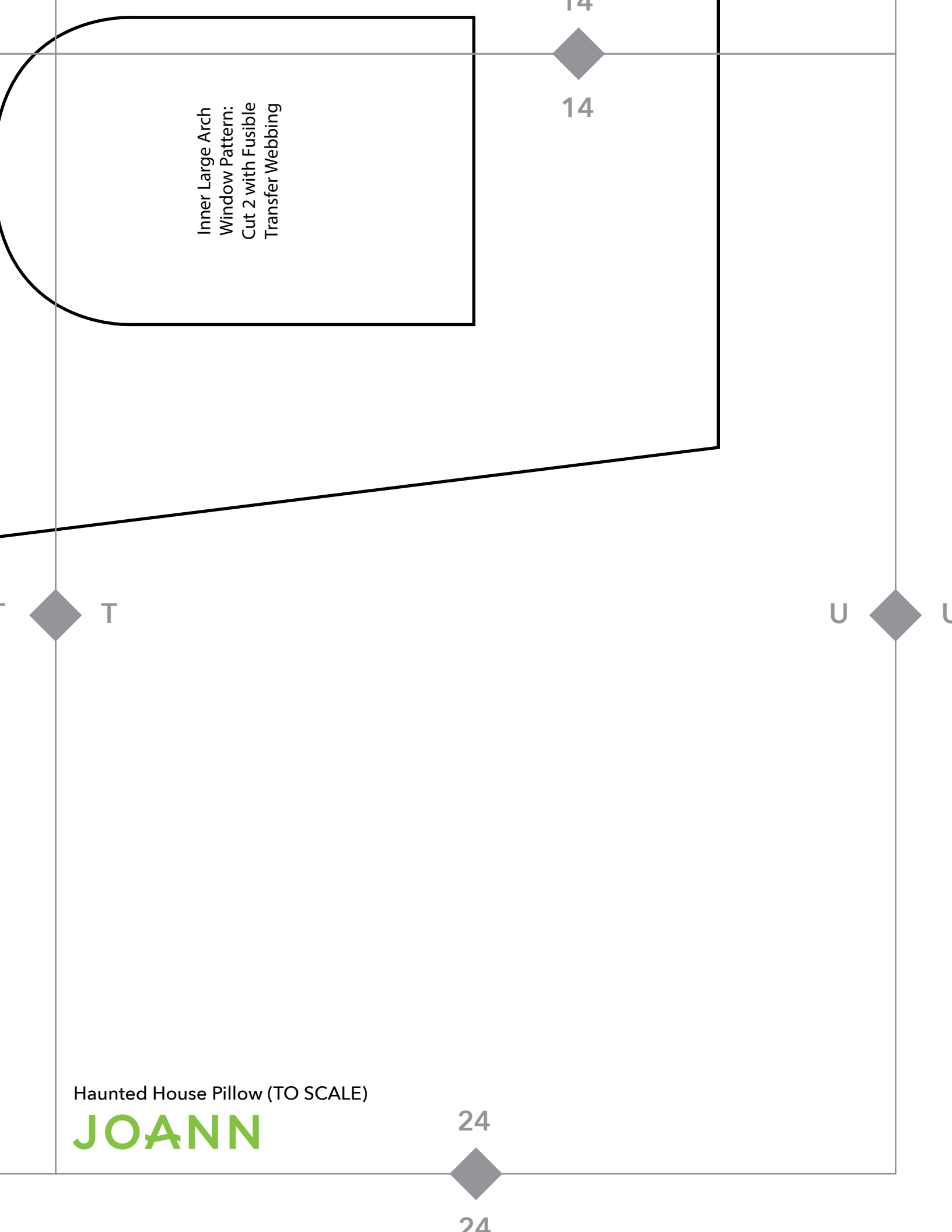
23

23

Haunted House Pillow (TO SCALE)

JOANN





Inner Large Arch
Window Pattern:
Cut 2 with Fusible
Transfer Webbing



14



T



U



24

24

Haunted House Pillow (TO SCALE)

JOANN