

Yarnspirations™
spark your inspiration!



KNIT
SKILL LEVEL
EASY

Designed by Nancy J. Thomas



Nordic Holiday Balls

Try some simple color work while you knit these Nordic patterned balls. They'll look wonderful on your tree, in an earthy bowl or in a glass cylinder all holiday season!

What you will need:

RED HEART® With Love®: 1 skein 1621 Evergreen OR 1909 Holly Berry A, and 1 skein 1101 Egghell B.

Susan Bates® Knitting Needles: 5mm [US 8] set of 4 double pointed knitting needles.

One 4" (10 cm) Styrofoam® ball covered with plastic wrap, stitch marker, yarn needle.

GAUGE: 17 sts = 4" (10 cm); 21 rows = 4" (10 cm) in Stockinette st worked in rnds (knit every round) in color pattern. **CHECK YOUR GAUGE.** Use any size needles to obtain the gauge.



RED HEART® With Love®, Art. E400 available in solid color

7oz (198g), 370 yd (338m) and multicolor 5oz (141g), 230 yd (211m) skeins

Holiday ball measures 4" (10 cm) diameter

Special Stitch

M1 = Make 1 (Increase) – Lift strand between needles to left-hand needle and knit strand through the back loop, twisting it to prevent a hole.

Notes

- Holiday ball cover is worked in rounds on double pointed needles. The pattern is repeated 3 times in each round (once on each needle).
- Styrofoam® ball is easier to insert into cover if first covered with plastic wrap.

NORDIC HOLIDAY BALL COVER

With **A**, leaving a long beginning tail, cast on 12 sts. Divide sts evenly onto 3 double pointed needles (4 sts on each needle). Place marker for beginning of round. Join to work in the round, being careful not to twist. Increase Section

Round 1: Knit.

Round 2: [K1, M1, k2, M1, k1] 3 times—18 sts.

Round 3: [K2, M1, K2, M1, k2] 3 times—24 sts.

Round 4: [K3, M1, k2, M1, k3] 3 times—30 sts.

Round 5: Knit.

Round 6: [K1, M1, k8, M1, k1] 3 times—36 sts.

Round 7: [K2, M1, k8, M1, k2] 3 times—42 sts.

Round 8: [K3, M1, k8, M1, k3] 3 times—48 sts.

Round 9: Knit.

Round 10: [K1, M1, k14, M1, k1] 3 times—54 sts.

Round 11: Knit.

Charted Color Pattern

Note: Color pattern can be worked by following written instructions or reading chart. Read all rows of chart from right to left.

Round 1: *With **B**, k1; [with **A**, k1; with **B**, k2] twice; with **A**, k1; with **B**, k1; repeat from * around.

Round 2: *With **A**, k1; with **B**, k1; with **A**, k1; with **B**, k3; with **A**, k1; with **B**, k1; with **A**, k1; repeat from * around.

Round 3: With **A**, knit.

Round 4: *With **B**, k1; with **A**, k2; repeat from * around.

Round 5: *With **A**, k1; with **B**, k1; [with **A**, k2; with **B**, k1] twice, with **A**, k1; repeat from * around.

Round 6: *With **A**, k2; with **B**, k1; repeat from * around.

Round 7: Repeat Round 4.

Round 8: With **A**, knit.

Round 9: Repeat Round 2.

Round 10: Repeat Round 1. Cut **B**.

Round 11: With **A**, knit.

Decrease Section

Continue with **A** only.

Round 1: [K1, k2tog, k12, k2tog, k1] 3 times—48 sts.

Round 2: Knit.

Round 3: [K1, k2tog, k10, k2tog, k1] 3 times—42 sts.

Round 4: Knit.

Round 5: [K1, k2tog, k8, k2tog, k1] 3 times—36 sts.

Round 6: Knit.

Round 7: [K1, k2tog, k6, k2tog, k1] 3 times—30 sts.

Round 8: Knit.

Cut yarn, leaving a long tail. With yarn needle thread tail through remaining 30 stitches removing the stitches from knitting needle. Slip cover over Styrofoam® ball and pull on tail to tighten cover and close top opening. With yarn needle, thread beginning tail through base of cast-on stitches and pull on tail to tighten cover and close opening.

Continued...

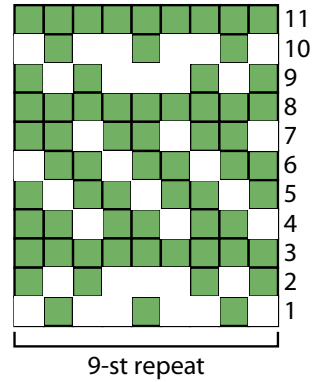
FINISHING


Weave in all ends.


ABBREVIATIONS

A, and B = Color A and Color B; k = knit;
k2tog = knit next 2 sts together; st(s) =
stitch(es); [] = work directions in brackets
the number of times specified; * = repeat
whatever follows the * as indicated.

Color Pattern



 1621 Evergreen OR 1909 Holly Berry (A)

 1101 Eggshell (B)