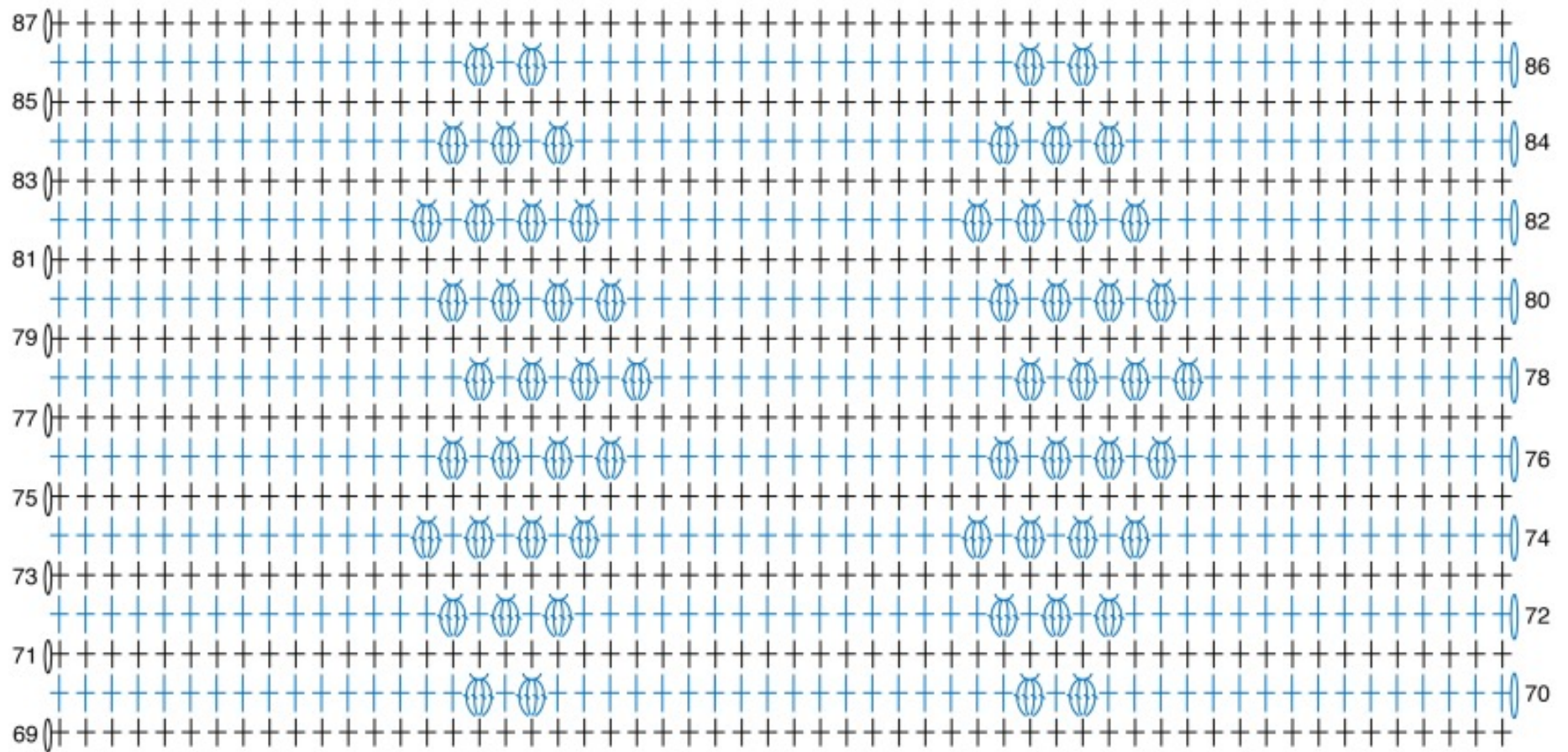


Red Heart Aran Hearts Throw



REDUCED SAMPLE OF POPCORN HEARTS PATTERN

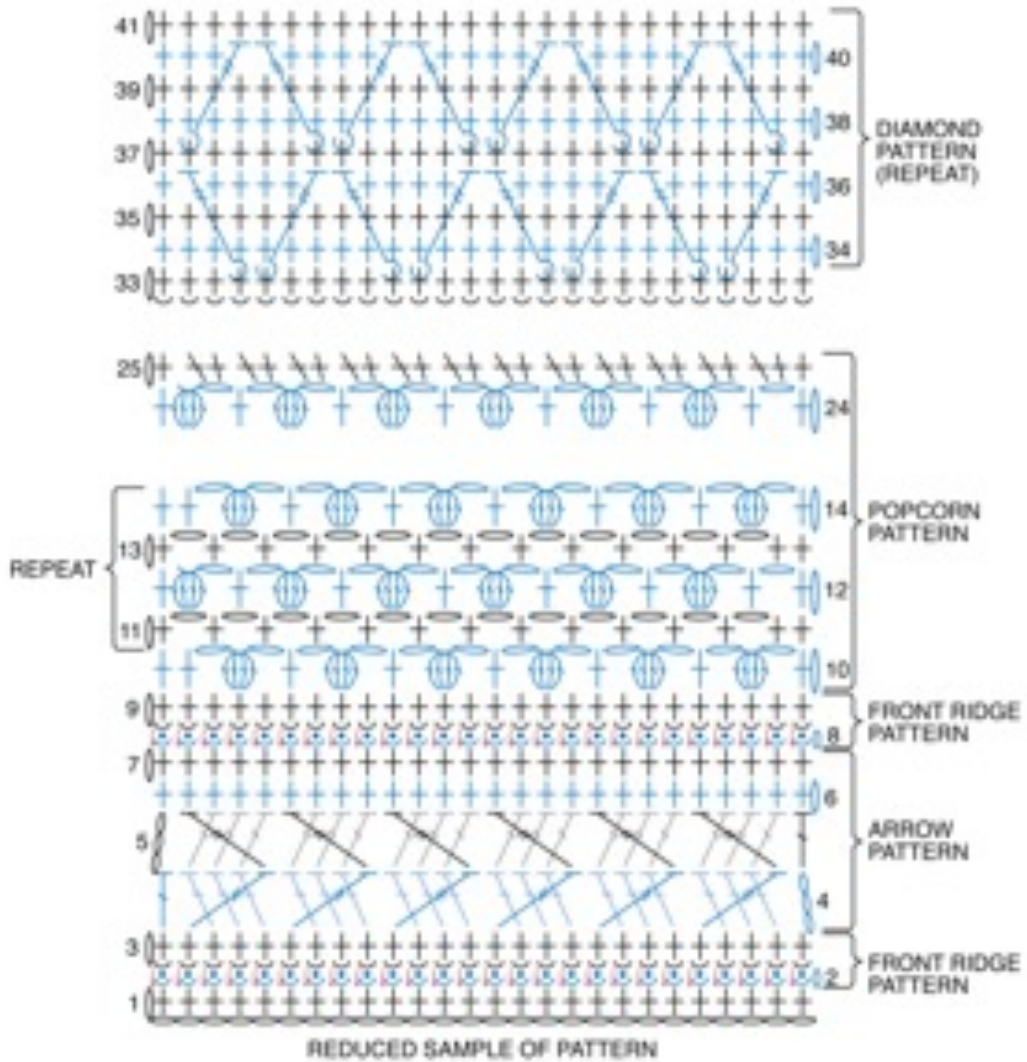
STITCH KEY

○ = chain (ch)

† = single crochet (sc)

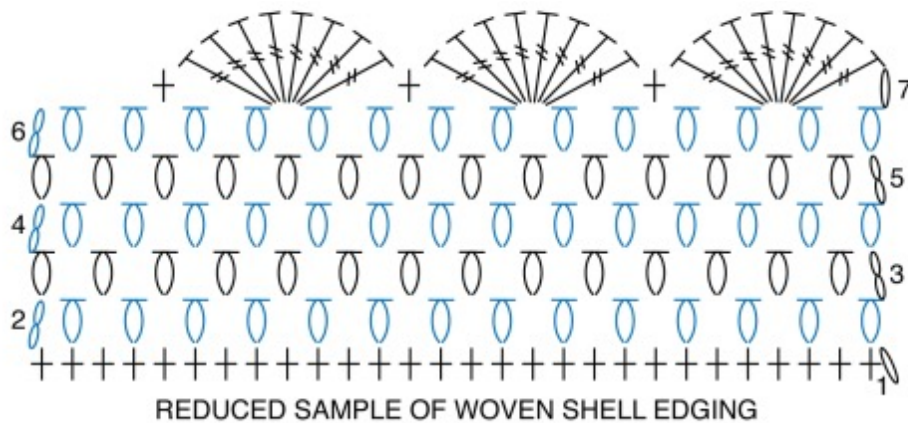
⊕ = popcorn

Red Heart Aran Hearts Throw



STITCH KEY

- = chain (ch)
- = slip stitch (sl st)
- † = single crochet (sc)
- ⋈ = double crochet (dc)
- ⋈ = treble crochet (tr)
- ⋈ = front post treble crochet (ftrp)
- ⊖ = popcorn
- ⌋ = worked in front loop



STITCH KEY

- = chain (ch)
- † = single crochet (sc)
- ⋈ = treble crochet (tr)
- ⊖ = woven stitch (woven st)
- ⌋ = shell