



SQUARE DEAL SWEATER | CROCHET





SQUARE DEAL SWEATER | CROCHET

WR1680 Crochet Austrian Sleigh Robe 

Designed by Michele Thompson.

Afghan measures 50" x 60".

RED HEART® "Super Saver®": 25 Ounces 389 Hunter **CA**, 23 ounces 316 Soft White **CB**, and 12 ounces 376 Burgundy **CC**.

Crochet Hooks: 6mm [US J-10] and 5.5mm [US I-9]. Yarn needle; 3" cardboard; 12 large (7/8") silver-tone Scandinavian-type buttons; sewing needle and thread.

GAUGES: Basic Square = 6 1/2" x 6 1/2"; sts = 4"; rows = 4" in sc. **CHECK YOUR GAUGE. Use any size hook to obtain the gauges.**

SPECIAL ABBREVIATION:

MB (make bobble): [yo and draw up a loop, yo and draw through 2 loops] 4 times all in same st, yo and draw through all 5 loops on hook.

NOTE: Larger hook is used throughout unless otherwise specified.

BASIC SQUARE (Make 27): With **CA**, ch 3; join with a slip st to form a ring.

Rnd 1: Ch 1, 8 sc in ring; join with a slip st in first sc.

Rnd 2: Ch 1, [sc in sc, (slip st, ch 5, slip st) all in next sc] 4 times; join. Fasten off.

Rnd 3: Attach **CB** in any sc; ch 3, (2 dc, ch 3, 3 dc) all in same sc, [ch 1, skip (slip st, ch-5, and slip st), (3 dc, ch 3, 3 dc) all in next sc] 3 times, ch 1; join with a slip st in top of ch-3. Fasten off.

Rnd 4: Attach **CC** in any ch-3 corner space; ch 3, (dc, ch 3, 2 dc) all in same space, * dc in next 2 dc, ch 1, skip next dc, dc over the ch-5 and the ch-1 spaces together, skip next dc, dc in next 2 dc **, (2 dc, ch 3, 2 dc) all in next ch-3 space; repeat from * around, end at **, join. Fasten off.

Rnd 5: Attach **CB** in the dc that was worked over the 2 spaces together; ch 1, [sc in dc, sc in ch-1 space, sc in next 4 dc, 5 sc in corner ch-3 space, sc in next 4 dc, sc in ch-1 space] 4 times; join. Fasten off.

Rnd 6: Attach **CA** in 3rd sc of corner 5-sc; ch 3, (dc, ch 3, 2 dc) all in same sc, * [skip next sc, 2 dc in next sc] 7 times, skip next sc **, (2 dc, ch 3, 2 dc) all in next (center corner) sc; repeat from * around, end at **, join. Fasten off.

Sew squares together in three strips of 9 squares.

SIDE PANEL (Worked on one side of 2 strips only): With right side facing, attach **CA** at bottom right-hand

corner of strip; ch 1, work 21 sc across each square changing to **CC** in last sc; turn – 189 sc.

Bobble Trim Row (Wrong Side): With **CC**, ch 4, skip first 2 sc, * MB in next sc, ch 1, skip next sc, dc in next sc **, ch 1, skip next sc; repeat from * across, end at ** and change to **CA** in last st; turn.

Next Row: With **CA**, ch 1, sc in each st and space across; turn – 189 sts.

Next Row: Ch 1, sc in each sc across changing to **CB** in last sc; turn.

Work 37 rows sc with **CB**. Work 2 rows sc with **CA**. Work Bobble Trim Row with **CC**. Work 2 rows sc with **CB**. Fasten off.

Work cross-stitch embroidery on both Side Panels following Chart. Sew last row of one panel to next strip of squares; repeat. Construction is now complete.

Outer Edging-Rnd 1: With right side facing, attach **CA** in any dc; ch 1, work sc around entire afghan, working 5 sc in corner ch-3 spaces; join with a slip st in first sc; drop yarn, change to **CC**; TURN.

Rnd 2: Ch 4, work as for Bobble Trim Row around, working the equivalent of 3 sts in each corner sc; join with a slip st in 3rd ch of ch-4; drop yarn; pick up **CA**; TURN.

Rnd 3: Ch 1, sc in each st and ch around and work 3 sc in corners; join. Fasten off **CA**.

Rnd 4-Picot Edging: With **smaller hook**, pick up **CC** in sc, * ch 2, slip st in 2nd ch from hook, skip next sc, slip st in next 2 sc; repeat from * around. Fasten off.

Trim Bobbles (Make 85): **NOTE:** Begin and end Trim Bobble with long ends to be used later to sew bobbles on. With **smaller hook** and **CC**, ch 3; MB in 3rd ch from hook. Fasten off. Sew bobbles on places marked on Chart.

Optional Tassel Trim (Make 12): Wind **CC** around cardboard 25 times. Tie wraps at one edge of cardboard. Cut wraps at opposite edge of cardboard. Tie about 1" down from top. Trim.

Sew tassels on top and bottom edges of Bobble Trim Rows as shown. Sew one button over each tassel where tassel is sewn to afghan.

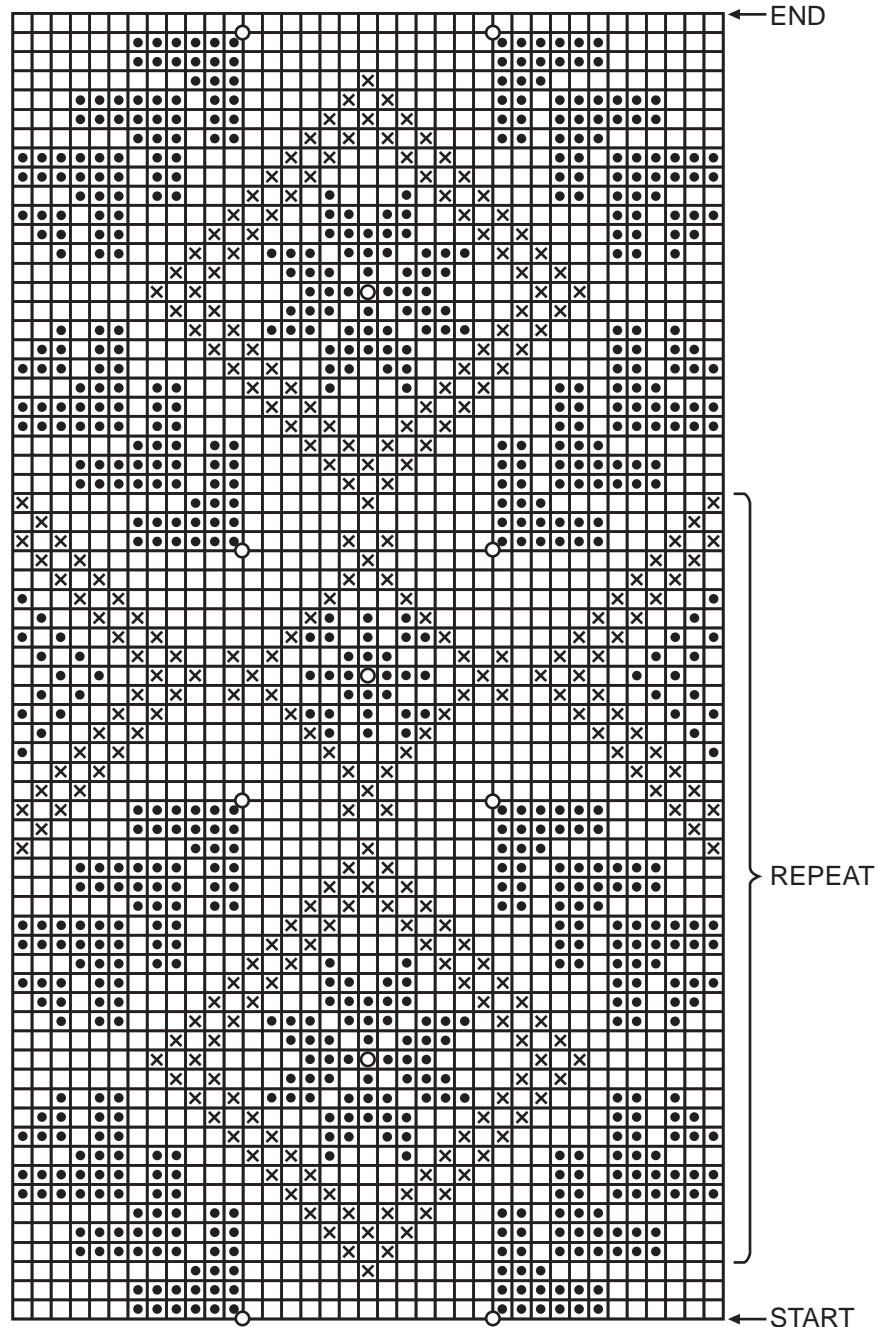
(4 Medium) RED HEART® "Super Saver®". Art. F300 (7 ounce/364 yard solid color skeins; 5 ounce/244 yard multi-color skeins).

ABBREVIATIONS: **CA, CB, CC** = Color A, Color B, Color C; **ch** = chain; **dc** = double crochet; **lp (s)** = loop (s); **mm** = millimeters; **rep** = repeat; **rnd** = round; **sc** = single crochet; **sl** = slip; **sp** = space; **st(s)** = stitch (es); **yo** = yarn over; * or ** = repeat whatever follows the * or ** as indicated; [] = work directions in brackets the number of times specified.

©2007 Coats & Clark, P.O. Box 12229, Greenville, SC 29612-0229
FREE patterns at www.coatsandclark.com.



AUSTRIAN SLEIGH ROBE CHART





AUSTRIAN SLEIGH ROBE CHART KEY

CHART KEY









-  = CB
-  = CA
-  = CC
-  = Bobble in CC

CHART KEY

-  = Background sc in CB
-  = Cross st in CA
-  = Cross st in CC
-  = Bobble in CC