



KNIT | SKILL LEVEL: **INTERMEDIATE**

ABBREVIATIONS

Approx = Approximately

Beg = Beginning

Cont = Continue

K = Knit

K2tog = Knit next 2 stitches together

Kfb = Increase 1 stitch by knitting into front and back of next stitch

P = Purl

Pat = Pattern

Rep = Repeat

RS = Right side

Sl1Pwyib = Slip next stitch purlwise with yarn held in back

Sl1Pwyif = Slip next stitch purlwise with yarn held in front

St(s) = Stitch(es)

WS = Wrong side

MEASUREMENTS

Approx 50" x 58" [127 cm x 147.5 cm].

GAUGES

14 sts and 28 rows = 4" in garter st.

17 sts and 28 rows = 4" [10 cm] in pat.

INSTRUCTIONS

With A, cast on 162 sts. **Do not** join. Working back and forth across needle in rows, proceed as follows:

Knit 12 rows (garter st), noting 1st row is WS.

Increase Row: K2. Kfb. *K4. Kfb. Rep from * to last 4 sts. K4. 194 sts (multiple of 24 sts + 2).

Proceed in pat as follows (see chart on page 2):

1st row: (RS). With B, K1. *Sl1Pwyib. K2. Rep from * to last st. K1.

2nd row: With B, K1. *P2. Sl1Pwyif. Rep from * to last st. K1.

3rd row: With A, K1. *K1. Sl1Pwyib. (K2. Sl1Pwyib) 3 times. K3. (Sl1Pwyib. K2) 3 times. Sl1Pwyib. Rep from * to last st. K1.

MATERIALS

Bernat® Crushed Velvet™ (10.5 oz/300 g; 315 yds/288 m)

Contrast A Cream (16002)

3 balls

Contrast B Deep Gray (16010)

2 balls

Size U.S. 8 (5 mm) circular knitting needle 36" [91.5 cm] long **or size needed to obtain gauge.**

4th row: With A, K1. *S1Pwyif. (P2. S1Pwyif) 3 times. P3. (S1Pwyif. P2) 3 times. S1Pwyif. P1. Rep from * to last st. K1.

5th row: With B, K1. *K2. (S1Pwyib. K2) 3 times. S1Pwyib. K1. S1Pwyib. (K2. S1Pwyib) 3 times. K1. Rep from * to last st. K1.

6th row: With B, K1. *P1. (S1Pwyif. P2) 3 times. S1Pwyif. P1. S1Pwyif. (P2. S1Pwyif) 3 times. P2. Rep from * to last st. K1.

7th and 8th rows: With A, rep 1st and 2nd rows.

9th and 10th rows: With B, rep 3rd and 4th rows.

11th and 12th rows: With A, rep 5th and 6th rows.
These 12 rows form pat.

Cont in pat until work from beg measures approx 56" [142 cm], ending on 6th or 12th row of pat. Break B.

Decrease Row: With A, K2. K2tog. *K4. K2tog. Rep from * to last 4 sts. K5. 162 sts.

Knit 12 rows (garter st). Cast o~ knitwise.

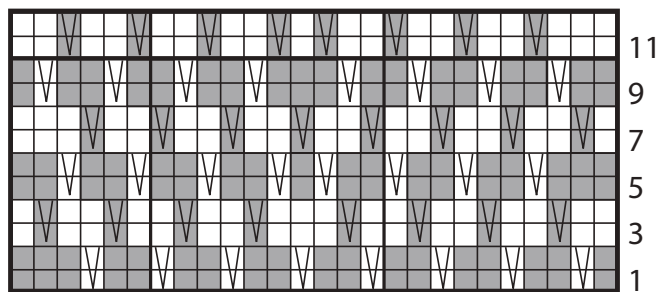
Side Borders

With A and RS facing, pick up and knit 190 sts evenly along side edge of Blanket. **Do not** join. Working back and forth across needle in rows, proceed as follows:
Knit 12 rows.
Cast o~ knitwise.

Rep for opposite side edge of Blanket.



Chart



24-st rep

Start Here

Key

- = With A, knit on RS rows; purl on WS rows
- = With B, knit on RS rows; purl on WS rows
- ▽ = With A, S1Pwyib on RS rows; S1Pwyif on WS rows
- ▾ = With B, S1Pwyib on RS rows; S1Pwyif on WS rows