



# Symphony Wrap

By Lauren Rad

**Yarnalia**



**Expert and hard worker:**

We do everything that's in our hands so that the yarns that land on yours feel like what you needed to make your projects even more beautiful.

**Level:**

Easy

**Sizes:**

One size - Adjustable

**Finished measurements:**

90" x 14"/(228).(5 x 35.5 cm)

## Materials:

### Yarnalia Cozy:

(Cozy (worsted weight; 100% Baby Alpaca, 219yds/200m per 100 g) in (MC) Snow, 3 balls; (CC1) Tangerine, 2 balls; (CC2) Sky Blue, 2 balls.

## Needles and notions:

**US Size 7** (4.5 mm) needles or size to obtain gauge.

Stitch markers (optional), tapestry needle.

## Gauge:

20 sts x 26 rows = 4"/10 cm in seed stitch, blocked  
18 sts x 38 rows = 4"/10 cm in seed stitch, unblocked

**Note:** Gauge is not crucial for this project but will affect finished dimensions and yardage. Blocking and the weight of the finished piece will stretch the initial gauge significantly.

## Abbreviations:

**CC:** contrast color.

**CDD:** centered double decrease – slip 2 sts together knitwise, k1, pass slipped sts over.

**CO:** cast on.

**k:** knit.

**MC:** main color.

**p:** purl.

**rep:** repeat.

**RS:** right side.

**st(s):** stitch(es).

**tbl:** through back loop.

**yo:** yarn over.

**WS:** wrong side.

## Instructions:

With MC and preferred cast-on method, CO 69 sts..

Referring to chart or written instructions below, work Rows 1-34 a total of 17 times or until wrap measures about 2"/5 cm less than desired finished length, allowing for yarn growth during blocking. Alternate CC1 and CC2 each 34-row repeat, beginning and ending with CC1.

Repeat Rows 1-13 once more, then bind off using your preferred method.

## FINISHING

Break yarn, weave in all ends, and block as desired.

## Written instructions:

**Rows 1-13:** With MC, \*k1, p1; rep from \* to last st, k1.

Change to CC.

**Row 14 (WS):** \*K1, p1, k1, p to last 3 sts, k1, p1, k1.

**Row 15 (RS):** (K1, p1) × 2, \*p1, k1tbl, yo, cdd, yo, k1tbl; rep from \* to last 5 sts, p2, k1, p1, k1.

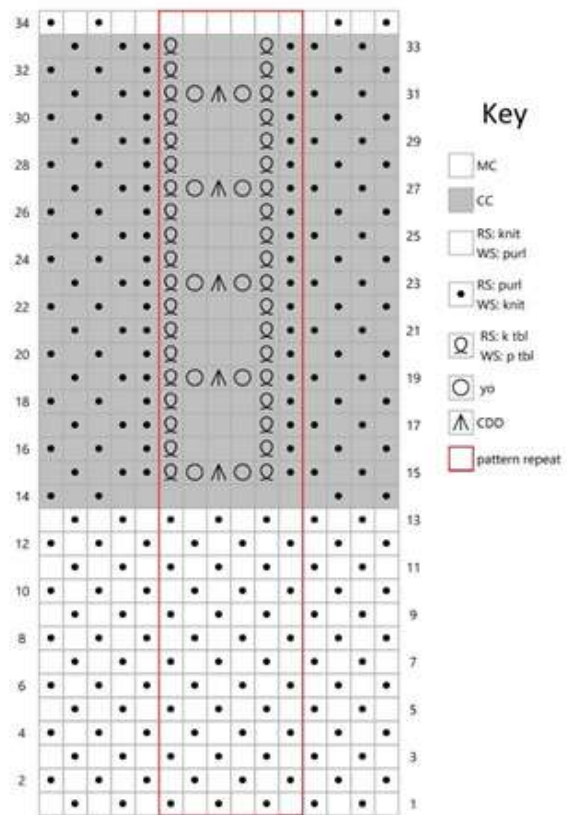
**Row 16:** (K1, p1) × 2, k1, \*p1tbl, p3, p1tbl, k1; rep from \* to last 4 sts, (p1, k1) × 2.

**Row 17:** (K1, p1) × 2, \*p1, k1tbl, k3, k1tbl; rep from \* to last 5 sts, p2, k1, p1, k1.

**Row 18:** as Row 16.

**Rows 19-33:** Rep Rows 15-18 three times, then rep Rows 15-17 once. Change to MC.

**Row 34:** as Row 14.



## Abbreviations

**Beg:** beginning

**BO:** bind off

**CO:** cast on

**cn:** cable needle

**dec:** decrease

**dpn:** double pointed needles

**K:** knit

**k tbl:** knit through the back loop(s)

**k2tog:** Knit 2 stitches together

**k3tog:** Knit 3 stitches together LH: left hand

**M1:** Pick up horizontal strand between stitch just worked and next stitch from front to back, place on left hand needle, knit this stitch through the back (1 stitch increased).

**M1L:** Work as for M1.

**M1p:** Pick up horizontal strand between stitch just worked and next stitch from front to back, place on left hand needle, purl this stitch through the back (1 stitch increased).

**M1R:** Pick up horizontal strand between stitch just worked and next stitch from back to front, place on left hand needle, knit this stitch through the front (1 stitch increased).

**MC:** main color

**CC:** contrast color

**BOR:** beginning of round

**p:** purl

**PM:** place marker

**psso:** pass slip stitch over knit stitch

**p1d:** purl 1 st by going under the stitch below and working through both sts.

**p2tog:** purl 2 stitches together

**rep:** repeat

**RH:** right hand

**rnd(s):** round(s)

**RS:** right side

**sl:** slip as if to knit

**sl2tog-k1-psso:** Slip 2 together (as if to k2tog), knit 1, pass the 2 slipped stitches over.

**SM:** slip marker

**ssk:** Slip 2 stitches knitwise, insert point of left hand needle through fronts of these 2 stitches and knit 2 together.

**sssk:** Slip 3 stitches knitwise, insert point of left hand needle through fronts of these 3 stitches and knit 3 together.

**st(s):** stitch(es)

**TBL:** through back loop(s)

**tog:** together

**WS:** wrong side

**wyib:** with yarn in back

**wyif:** with yarn in front

**yo:** yarn over

**End on WS:** end having just completed a Wrong Side row.

**End on RS:** end having just completed a Right Side row.

**STOCKINETTE ST (St st):** Knit 1 row, purl 1 row alternately when working on straight needles. The knit side is the right side of work. Knit EVERY round when working in the round on a circular needle.

**Reverse St st (Rev St st):** Purl 1 row, knit 1 row alternately when working on straight needles. The purl side is the right side of the work. Purl EVERY round when working in the round on a circular needle.

**GARTER ST:** Knit EVERY row when working on straight needles. Knit 1 round, purl 1 round when working on a circular needle.

**K1, p1 Rib:** Knit 1 st, purl 1 st.

**3 Needle Bind Off:** With RS together, hold in one hand two needles with the same number of sts on each with third needle, knit tog 1 st from each needle.