



CROCHET | SKILL LEVEL: **INTERMEDIATE**

ABBREVIATIONS

Approx = Approximately
Beg = Begin(ning)(s)
Ch = Chain(s)
Cont = Continue(ity)
Dc = Double crochet
Rep = Repeat

Rnd(s) = Round(s)
RS = Right side
Sc = Single crochet
Sl st = Slip stitch
St(s) = Stitch(es)
WS = Wrong side

MEASUREMENTS

Approx 50" [127 cm] wide x 60" [152.5 cm] long.

GAUGE

12 sc and 14 rows = 4" [10 cm].

INSTRUCTIONS

With MC, ch 156.
 Beg working Chart (see page 2), noting that each square is equal to 1 sc and reading RS rows from right to left and WS rows from left to right. Carry color not in use loosely across top of row and work sts around it. Change colors by drawing new color through last 2 loops on hook and proceed with new color.

1st row of Chart: (RS). 1 sc in 2nd ch from hook. 1 sc in each ch to end of ch. Turn. 155 sc.

Note: Work 14-st rep of Chart 11 times across each row.

2nd row of Chart: Ch 1. 1 sc in each sc to end of row. Turn. Keeping cont of Chart, rep 2nd row until all 17 rows of Chart are complete.

Rep 1st to 17th rows of Chart for pat until Blanket measures approx 58" [147.5 cm] long, ending on 17th row of pat.

Break A. Cont with MC for Border as follows:

MATERIALS

Bernat® Crushed Velvet™ (10.5 oz/300 g; 315 yds /288 m)

Main Color (MC) Deep Gray (16010) **5 balls**

Contrast A White (16007) **3 balls**

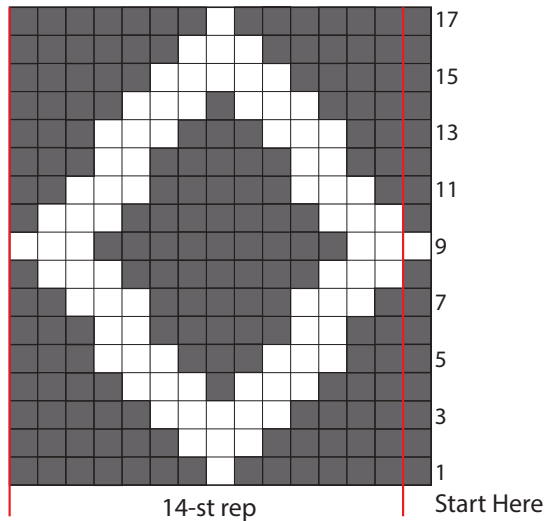
Size U.S. I/9 (5.5 mm) crochet hook **or size needed to obtain gauge.**

Border

With RS facing, cont with MC, beg at corner as follows:

1st rnd: Ch 3 (counts as dc). Work dc evenly around entire Blanket, working 5 dc in each corner. Join with sl st to top of ch-3.

2nd rnd: Ch 3. 1 dc in each dc around, working 5 dc in each corner dc. Join with sl st to top of ch-3. Fasten off.



Key

■ = Main Color (MC)

□ = Contrast A

