

JOANN



Crochet Flower Power Pants

Skill Level: Easy

Crafting Time: Varies



SUPPLIES & TOOLS:

- **Red Heart® Super Saver®**
(7 oz/198 g; 364 yds/333 m)
Main Color (MC) Black (0312)
2-2 balls or **400/365-440/400** yds/m
- **Red Heart® All in One™ Granny Square™**
(8.8 oz/250 g; 417 yds/381 m)
Contrast A Blue Beacon (2032)
1-1 ball or **10-14** squares
Contrast B Hyper Violet (2022)
1-1 ball or **11-14** squares
- **Red Heart® All in One Flower Square™**
(8.8 oz/250 g; 417 yds/381 m)
Contrast C Blue Bell (2006)
1-1 ball or **10-14** squares
Contrast D Peony Pop (2021)
1-1 ball or **11-14** squares

- Size U.S. I/9 (5.5 mm) Susan Bates® Silvalume® crochet hook **or size needed to obtain gauge.**
- Susan Bates® stitch markers.
- Susan Bates® yarn needle.

GAUGE:

Motif = Approx 6" [15 cm] square.

SIZES:

To fit hip measurement

XS/S/M 32-42" [81.5-106.5 cm]

L/XL/2XL 44-52" [112-132 cm]

Finished hip measurement

(Pants will stretch to fit)

XS/S/M 37" [94 cm]

L/XL/2XL 49" [124.5 cm]

Crochet Flower Power Pants

The instructions are written for size **XS/S/M**. If changes are necessary for larger sizes the instructions will be written **XS/S/M (L/XL/2XL)**. Numbers for each size are shown in the same color throughout the pattern. When only one number is given in black, it applies to both sizes.

ABBREVIATIONS:

Approx = Approximately

Beg = Begin(ning)(s)

Ch = Chain(s)

Dc = Double crochet

Hdc = Half double crochet

PM = Place marker

Rem = Remaining

Rep = Repeat

Rnd(s) = Round(s)

RS = Right side

Sc = Single crochet

Sc2tog = Draw up a loop in each of next 2 sc.

Yoh and draw through all 3 loops on hook

Sl st = Slip stitch

Sp(s) = Space(s)

St(s) = Stitch(es)

Tog = Together

Tr = Treble crochet

Yoh = Yarn over hook

INSTRUCTIONS:

GRANNY SQUARE MOTIF

Notes:

- Granny Square Motifs begin with Color 1 (shortest color rep) from center of pull-skein, leaving a 4" [10 cm] tail to weave in.
- Each color aligns with 1 rnd in the Motif with 5 colors in total. If too much color is left at end of rnd, pull back some sts and slightly loosen gauge to re-work sts and finish at color change. If too little color is left, pull back some sts and slightly tighten gauge to re-work sts and finish at color change.
- When Motif is complete, cut yarn where Color 5 (longest color rep) ends, leaving a tail for weaving in. Begin next Motif with Color 1 and repeat 5 rnds for each Motif.
- Ch 3 at beg of rnd counts as dc.
- Ch 6 at beg of rnds counts as dc and ch-3 sp.
- Join all rnds with sl st to 3rd ch of ch-6 unless otherwise indicated.

Make **10 (14)** Motifs with A.

Make **11 (14)** Motifs with B.

See diagram on page 5.

With Color 1, ch 4. Join with sl st to first ch to form ring.

1st rnd: (RS). Ch 6. (3 dc. Ch 3) 3 times in ring. 2 dc in ring. Join.

2nd rnd: Sl st in ch-3 sp. Ch 6. 3 dc in same ch-3 sp. *Ch 1. (3 dc. Ch 3. 3 dc) in next ch-3 sp. Rep from * twice more. Ch 1. 2 dc in first ch-3 sp. Join.

3rd rnd: Sl st in ch-3 sp. Ch 6. 3 dc in same ch-3 sp. *Ch 1. 3 dc in next ch-1 sp. Ch 1. (3 dc. Ch 3. 3 dc) in next ch-3 sp. Rep from * twice more. Ch 1. 3 dc in last ch-1 sp. Ch 1. 2 dc in first ch-3 sp. Join.

4th and 5th rnds: Sl st in ch-3 sp. Ch 6. 3 dc in same ch-3 sp. *(Ch 1. 3 dc) in each ch-1 sp to next ch-3 sp. Ch 1.** (3 dc. Ch 3. 3 dc) in next ch-3 sp. Rep from * twice more, then from * to ** once. 2 dc in first ch-3 sp. Join. Fasten off.

Crochet Flower Power Pants

FLOWER MOTIF

Notes:

- Each Color aligns with specific round(s) in the Motif using 3 Colors in total.
- Motif begins with Color 1 (shortest color rep) from center of pull-skein, leaving a 4" [10 cm] tail to weave in.
- 2nd and 3rd rnds will be worked in Color 2.
- 4th, 5th and 6th rnds will be worked in Color 3.
- If too much color is left at end of rnd, pull back some sts and slightly loosen gauge to re-work sts and finish at color change. If too little color is left, pull back some sts and slightly tighten gauge to re-work sts and finish at color change.
- Leave long tail of Color 3 at end of Motif to use for joining Motifs during finishing.
- Adjust gauge as needed working 4th, 5th and 6th rounds of Flower Motif to maintain 6" [15 cm] square finished size to match finished size of Granny Motifs.

Make **10** (**14**) Motifs with C.

Make **11** (**14**) Motifs with D.

See diagram on page 5.

With Color 1, ch 4. Join with sl st to first ch to form ring.

1st rnd: Ch 3. Work 9 dc in ring. Join. 10 dc. Color 1 complete.

2nd rnd: Color 2 begins. Ch 3. 1 dc in first dc. 2 dc in each dc around. Join. 20 dc.

3rd rnd: Sl st in next dc. (Ch 3. 1 tr) in same st as last sl st. 3 tr in next dc. (1 tr. 1 dc) in next dc. Sl st in next dc. *(1 dc. 1 tr) in next dc. 3 tr in next dc. (1 tr. 1 dc) in next dc. Sl st in next dc. Rep from * around, ending by joining with sl st to top of ch-3 of previous (2nd) rnd. Color 2 complete.

4th rnd: Color 3 begins. Sl st in first dc. Ch 3. *1 dc in next tr. 1 hdc in next tr. 1 sc in next tr. 1 hdc in next tr. 1 dc in each of next 2 sts. 1 tr in dc of 2nd rnd below sl st.** 1 dc in next dc. Rep from * 3 times more, then from * to ** once. Join.

5th rnd: Ch 6 (counts as tr and ch-2). 1 tr in same sp as sl st. *2 dc in next st. Ch 1. 1 dc in next st. 1 hdc in next st. 1 sc in next st. Ch 1. Skip next st. 1 sc in next st. 1 hdc in next st. 1 dc in next st. Ch 1. 2 dc in next st.** (1 tr. Ch 2. 1 tr) all in next st. Rep from * twice more, then from * to ** once. Join to 4th ch of ch-6.

6th rnd: Sl st in next ch-2 sp. Ch 2 (**does not** count as st). 1 hdc in same ch-2 sp. Ch 3. 3 hdc in same ch-2 sp. Ch 1. *(3 hdc. Ch 1) in each ch-1 sp to next corner ch-2 sp.** (3 hdc. Ch 3. 3 hdc) all in next ch-2 sp. Ch 1. Rep from * twice more, then from * to ** once. 2 hdc in first ch-2 sp. Join. Fasten off, leaving long tail.

Total **42** (**56**) Motifs.

Crotch Gusset

Note: Each edge of Crotch Gusset should match length of side of Motif.

With MC, ch 2.

1st row: (RS). 2 sc in 2nd ch from hook. Turn.

2nd row: Ch 1. 1 sc in each of next 2 sc. Turn.

3rd row: Ch 1. 2 sc in each of next 2 sc. Turn. 4 sc.

4th to 6th rows: Ch 1. 1 sc in each sc to end of row. Turn.

7th row: Ch 1. 2 sc in first sc. 1 sc in each sc to last sc. 2 sc in last sc. Turn.

Rep last 4 rows until there are 12 sc.

Next 3 rows: Ch 1. 1 sc in each sc to end of row. Turn.

Next row: Ch 1. Sc2tog. 1 sc in each sc to last 2 sc. Sc2tog. Turn. 10 sts.

Rep last 4 rows until there are 4 sts.

Next 3 rows: Ch 1. 1 sc in each sc to end of row. Turn.

Next row: Ch 1. (Sc2tog) twice. Turn.

Next row: Ch 1. 1 sc in each of next 2 sts. Turn.

Next row: Ch 1. Sc2tog. Fasten off.

Crochet Flower Power Pants

FINISHING

Following Assembly Diagram on page 5, join Motifs as follows:

Top part of Pants: Make 2 strips with **6 (8)** Motifs in each strip, joining Motifs tog using Flat Sl St seam.

Join back seam.

Seaming with Flat Sl St Join: (RS). Following Assembly Diagram (page 5) and ensuring all Motifs are oriented the same direction, with E sl st Motifs tog, working through back loops only and keeping working yarn to WS of work to create a flat sl st chain detail on RS of work (see diagram).



Flat Sl St Join

Note: Keep working yarn to WS of work so only flat sl st chain is visible on RS.

Legs: [total **30 (40)** Motifs for both Legs]. Make 10 strips (5 strips for each Leg) with **3 (4)** Motifs in each strip, joining Motifs tog using Flat Sl St seam and leaving opening for Crotch Gusset.

Sew inner leg seams, leaving opening for crotch gusset. Following diagram, sew Crotch Gusset into position between leg Motifs using Flat Sl St seam.

Leg edging: 1st rnd: (RS). Join MC with sl st to inner side seam. Ch 1. 1 sc in same sp as sl st. 1 sc in next corner ch-3 sp. *(1 sc in each of next 3 dc. 1 sc in next ch-1 sp) 4 times. 1 sc in each of next 3 dc. 1 sc in next corner ch-3 sp.** 1 sc in seam of 2 joined Motifs. 1 sc in next corner ch-3 sp of next Motif. Rep from * around ending at **. Join with sl st to top of first sc. Fasten off. Rep for second Leg.

Shape back Waistband: 1st rnd: (RS). Join MC with sl st to center back seam. Ch 1. 1 sc in same sp as sl st and each of next **45 (60)** dc, skipping all ch-sps. 1 sc in side joining seam. PM on last sc. 1 sc in each of next **45 (60)** dc. Join with sl st to first sc. **92 (122)** sc. PM for beg of rnd.

2nd rnd: Ch 3 (counts as dc). 1 dc in each of next **6 (13)** sc. 1 hdc in each of next 7 sc. 1 sc in each sc to last **13 (20)** sc. 1 hdc in each of next 7 sc. 1 dc in each sc to end of rnd. Join with sl st to top of ch-3.

3rd rnd: Ch 3. 1 dc in each of next **9 (16)** sc. 1 hdc in each of next 7 sts. 1 sc in each st to last **16 (23)** sts. 1 hdc in each of next 7 sts. 1 dc in each st to end of rnd. Join with sl st to first sc.

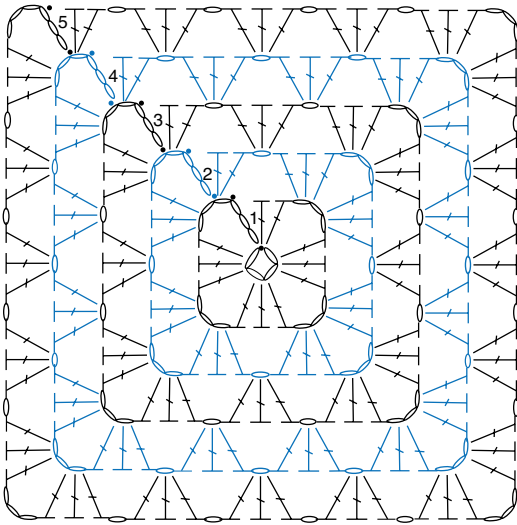
4th rnd: Ch 3. 1 dc in each of next **13 (20)** sc. 1 hdc in each of next 7 sts. 1 sc in each st to last **20 (27)** sts. 1 hdc in each of next 7 sts. 1 sc in each sc to end of rnd. Join with sl st to first sc.

5th rnd: Ch 2 (**do not** count as st). 1 hdc in each st around. Join with sl st to first hdc.

6th rnd: Ch 1. 1 sc in each hdc around. Join with sl st to first st. Fasten off.

Waist Cord: First st: With MC, ch 2. Draw up a loop in 2nd ch from hook. Yoh and draw through 1 loop on hook - chain made. Yoh and draw through 2 loops on hook - sc made. **Rem sts:** *Draw up a loop in "chain" of previous st. Yoh and draw through 1 loop on hook (chain). Yoh and draw through 2 loops on hook. Rep from * until Cord measures length to fit waist measurement and extra length for tie. Fasten off. Beg at front, thread cord through 5th rnd of hdc. Tie both ends at front.

Crochet Flower Power Pants

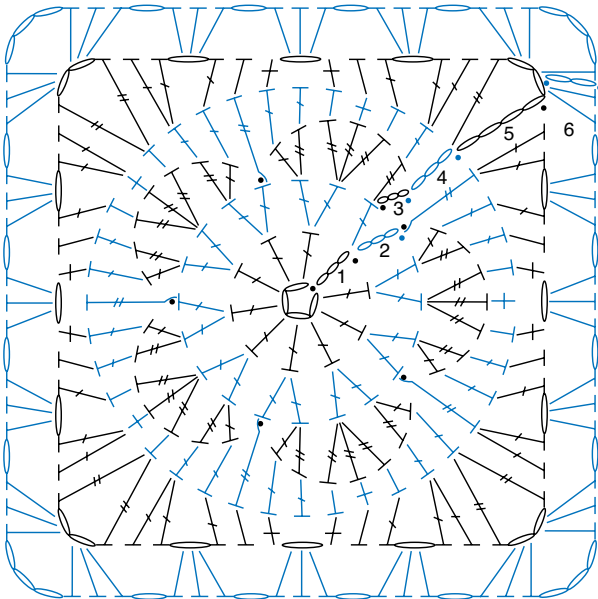


GRANNY SQUARE MOTIF



STITCH KEY

- = chain (ch)
- = slip stitch (sl st)
- + = single crochet (sc)
- ┤ = half double crochet (hdc)
- ┤ = double crochet (dc)
- ┤ = treble crochet (tr)

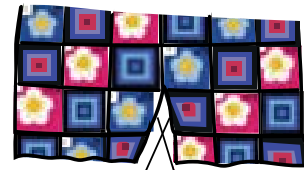


FLOWER MOTIF



Crotch Gusset

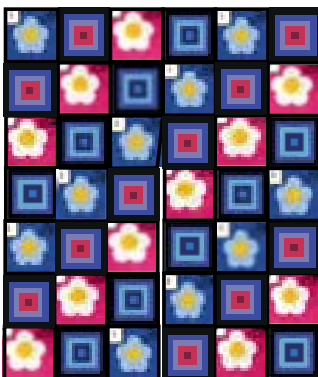
Beg ch Last row



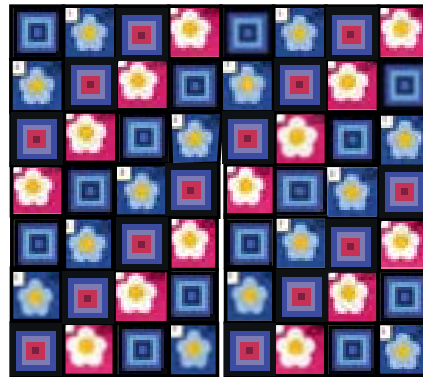
Beg ch of Crotch Last row of Crotch



XS/S/M



L/XL/2XL



Key

- A
- B
- C
- D