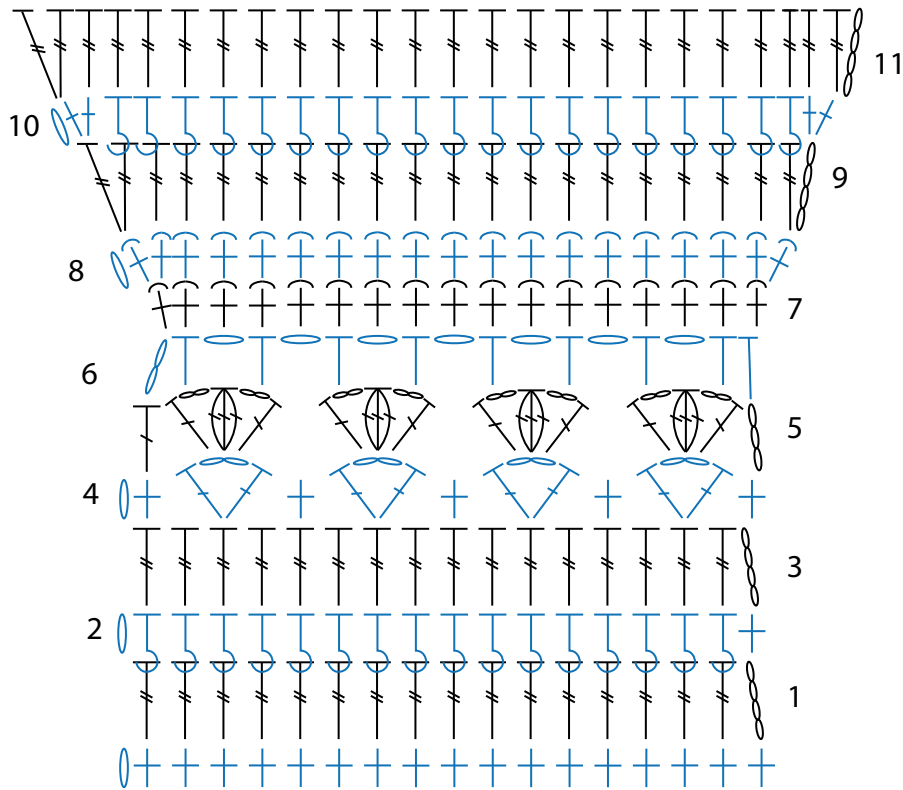


Caron Stripes to a Tee Crochet Pullover

Chart I

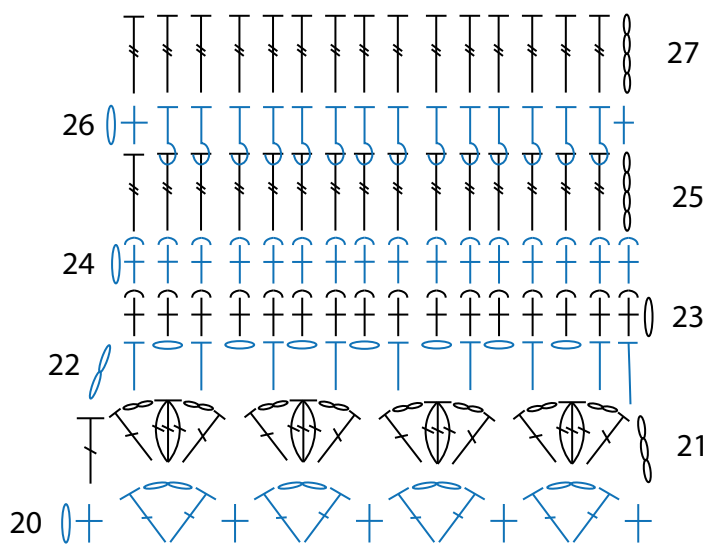


REDUCED SAMPLE OF PATTERN

Key

- = chain (ch)
- = single crochet (sc)
- = half double crochet (hdc)
- = front post half double crochet (hdcfp)
- = double crochet (dc)
- = treble crochet (tr)
- = Cluster
- = Work into back loops only

Chart II



REDUCED SAMPLE OF PATTERN