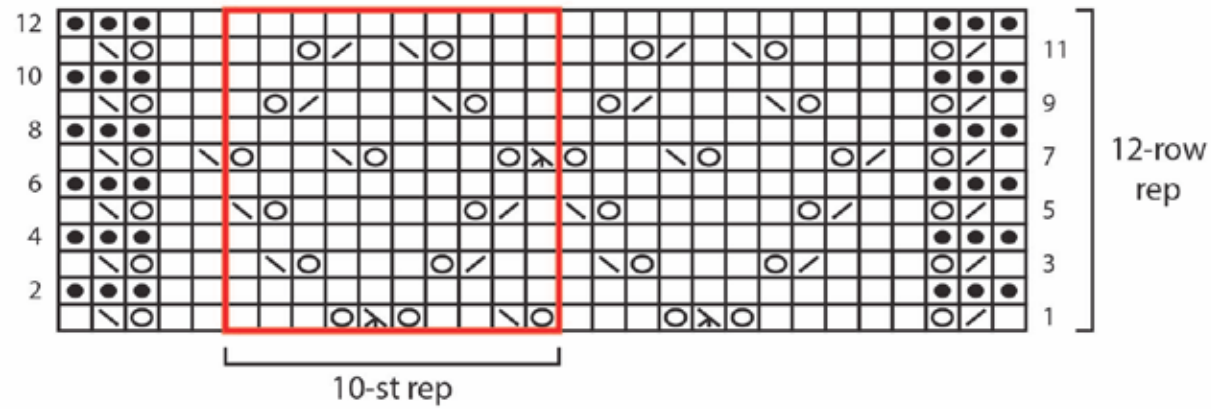


Sparta Grove Shawl

Lace Pattern I



KEY	
<input type="checkbox"/>	knit on RS, purl on WS
<input checked="" type="checkbox"/>	purl on RS, knit on WS
<input style="border: 1px solid black; border-radius: 50%; width: 15px; height: 15px; display: inline-block; vertical-align: middle;" type="checkbox"/>	yarn over
<input style="border: 1px solid black; width: 15px; height: 15px; display: inline-block; vertical-align: middle;" type="checkbox"/>	k2tog (knit 2 stitches together)
<input style="border: 1px solid black; width: 15px; height: 15px; display: inline-block; vertical-align: middle;" type="checkbox"/>	k3tog (knit 3 stitches together)
<input style="border: 1px solid black; width: 15px; height: 15px; display: inline-block; vertical-align: middle;" type="checkbox"/>	ssk (slip, slip, knit)
<input style="border: 1px solid black; width: 15px; height: 15px; display: inline-block; vertical-align: middle;" type="checkbox"/>	sk2p (slip, k2tog, pss0)
<input style="border: 2px solid red; width: 15px; height: 15px; display: inline-block; vertical-align: middle;"/>	repeat

Sparta Grove Shawl

Lace Pattern II

