



## MATERIALS

**Bernat® Blanket™** (10.5 oz/300 g; 220 yds/201 m)  
**Main Color (MC)** Pale Gray (10046) **5 balls or 1040 yds/947 m**

**Bernat® Blanket™** (5.3 oz/150 g; 108 yds/98 m)  
**Contrast A** Dark Teal (00745) **1 ball or 108 yds/98 m**

Size U.S. 11 (8 mm) circular knitting needle 36" [91.5 cm] long **or size needed to obtain gauge.** Cable needle.

 **KNIT | SKILL LEVEL: INTERMEDIATE**

## ABBREVIATIONS

**Approx** = Approximately

**Beg** = Begin(ning)

**Cont** = Continue(ity)

**K** = Knit

**M1P** = Make 1 stitch by picking up loop lying before next stitch and purling into back of loop

**P** = Purl

**P2tog** = Purl next 2 stitches together

**Pat** = Pattern

**Rep** = Repeat

**RS** = Right side

**St(s)** = Stitch(es)

**Tw4B** = Slip next 2 stitches onto cable needle and leave at back of work. K2, then P2 from cable needle.

**Tw4F** = Slip next 2 stitches onto cable needle and leave at front of work. P2, then K2 from cable needle.

**WS** = Wrong side

## MEASUREMENTS

Approx 51 x 62" [129.5 x 157.5 cm].

## GAUGE

8 sts and 13 rows in stocking st.

## INSTRUCTIONS

With A, cast on 128 sts. **Do not** join. Working back and forth across needle in rows, proceed as follows:

**1st row:** (RS). K6. \*P2. K4. Rep from \* to last 2 sts. K2.

**2nd row:** K2. \*P4. K2. Rep from \* to end of row.

Rep last 2 rows (K4. P2) ribbing for 5" [12.5 cm], ending on a 1st row.

**Next row:** (WS). K2. M1P. \*P2. M1P. P2. K2. Rep from \* to end of row. 150 sts. Break A.

**Foundation row 1:** With MC, knit.  
**Foundation row 2:** K8. \*P2. K5. Rep from \* to last 2 sts. K2.

Proceed in pat as follows:  
 See chart on page 2.

**1st row:** (RS). \*K2. P5. Rep from \* to last 3 sts. P1. K2.

**2nd row:** K8. \*P2. K5. Rep from \* to last 2 sts. K2.

**3rd row:** K4. \*P3. Tw4F. Rep from \* to last 6 sts. P4. K2.

**4th row:** K6. \*P2. K5. Rep from \* to last 4 sts. P2. K2.

**5th row:** K2. \*Tw4F. P3. Rep from \* to last 8 sts. Tw4F. P2. K2.

**6th row:** K4. \*P2. K5. Rep from \* to last 6 sts. P2. K4.

**7th row:** K2. P2. \*Tw4F. P3. Rep from \* to last 6 sts. Tw4F. K2.

**8th row:** K2. \*P2. K5. Rep from \* to last st. K1.

**9th row:** K2. P4. \*K2. P5. Rep from \* to last 4 sts. K4.

**10th row:** As 8th row.

**11th row:** K2. P2. \*Tw4B. P3. Rep from \* to last 6 sts. Tw4B. K2.

**12th row:** As 6th row.

**13th row:** K2. \*Tw4B. P3. Rep from \* to last 8 sts. Tw4B. P2. K2.

**14th row:** As 4th row.

**15th row:** K4. P3. \*Tw4B. P3. Rep from \* to last 3 sts. P1. K2.

**16th row:** As 2nd row.

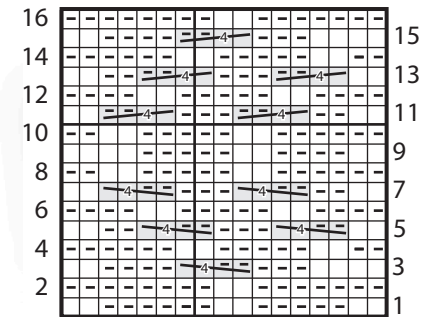
These 16 rows form Zig-Zag Cable Pat.

Cont in Zig-Zag Cable Pat until work from beg measures approx 61" [155 cm], ending on an 8th row of pat.

**Next row:** (RS). K2. P4. \*K2. P1. P2tog. P2. Rep from \* to last 4 sts. K4. 130 sts.

Knit 2 rows (garter st).

Cast off knitwise (WS).



Start Here

### Key

- = Knit on RS rows. Purl on WS rows
- ◻ = Purl on RS rows. Knit on WS rows

= Tw4B

= Tw4F