

**Yarnspirations™**  
spark your inspiration!



KNIT  
SKILL LEVEL  
EXPERIENCED

Designed by Joan Barnett



## What you will need:

**RED HEART® With Love®:** 9 skeins  
1303 Aran.

**Susan Bates® Knitting Needles:**  
5mm [US 8] 40" (100 cm) or  
longer circular needle

Cable needle, 12 stitch markers,  
yarn needle

**GAUGE:** 20 sts = 4" (10 cm); 22  
rows = 4" (10 cm) in Stockinette  
st. **CHECK YOUR GAUGE.** Use any  
size needles to obtain the gauge.



**RED HEART® With  
Love®, Art. E400**  
available in solid color

7oz (198g), 370 yd (338m) and  
multicolor 5oz (141g), 230 yd  
(211m) skeins

# Butterfly Cabled Blanket

*This breathtaking design is wonderful to make for a special wedding or anniversary commemoration. A classic all-white knit design, it features four beautiful cable pattern stitches with a Bramble Stitch border.*

Blanket measures 58 x 66" (147.5 x 167.5 cm)

## Special Stitches

**1/1 LC (1 over 1 Left Cross)** = Slip next stitch to cable needle and hold in front, k1, then k1 from cable needle.

**1/1 RC (1 over 1 Right Cross)** = Slip next stitch to cable needle and hold in back, k1, then k1 from cable needle.

**1/1 LPC (1 over 1 Left Purl Cross)** = Slip next stitch to cable needle and hold in front, p1, then k1 from cable needle.

**1/1 RPC (1 over 1 Right Purl Cross)** = Slip next stitch to cable needle and hold in back, k1, then p1 from cable needle.

**1/2 LC (1 over 2 Left Cross)** = Slip next stitch to cable needle and hold in front, k2, then k1 from cable needle.

**1/2 RC (1 over 2 Right Cross)** = Slip next 2 stitches to cable needle and hold in back, k1, then k2 from cable needle.

**1/2 LPC (1 over 2 Left Purl Cross)** = Slip next stitch to cable needle and hold in front, p2, then k1 from cable needle.

**1/2 RPC (1 over 2 Right Purl Cross)** = Slip next 2 stitches to cable needle and hold in back, k1, then p2 from cable needle.

**2/1 LC (2 over 1 Left Cross)** = Slip next 2 stitches to cable needle and hold in front, k1, then k2 from cable needle.

**2/1 RC (2 over 1 Right Cross)** = Slip next stitch to cable needle and hold in back, k2, then k1 from cable needle.

**2/1 LPC (2 over 1 Left Purl Cross)** = Slip next 2 stitches to cable needle and hold in front, p1, then k2 from cable needle.

**2/1 RPC (2 over 1 Right Purl Cross)** = Slip next stitch to cable needle and hold in back, k2, then p1 from cable needle.

**2/2 LC (2 over 2 Left Cross)** = Slip next 2 stitches to cable needle and hold in front, k2, then k2 from cable needle.

**2/2 RC (2 over 2 Right Cross)** = Slip next 2 stitches to cable needle and hold in back, k2, then k2 from cable needle.

**2/2 LPC (2 over 2 Left Purl Cross)** = Slip next 2 stitches to cable needle and hold in front, p2, then k2 from cable needle.

**2/2 RPC (2 over 2 Right Purl Cross)** = Slip next 2 stitches to cable needle and hold in back, k2, then p2 from cable needle.

**2/3 RC (2 over 3 Right Cross)** = Slip next 3 stitches to cable needle and hold in back, k2, then k3 from cable needle.

**2/1/2 RPC (2 over 2 over 1 Right Purl Cross)** = Slip next 3 stitches to cable needle and hold in back, k2, slip nearest stitch from cable needle (the last stitch that was slipped onto the cable needle) back to left needle and purl it, then k2 from cable needle.

**Bobble 3** = (K1, yo, k1) in next stitch, turn, k3, turn, sk2p.

**Bobble 5** = (K1, yo, k1, yo, k1) in next stitch, turn, p5, turn, k5, turn, p2tog, p1, p2tog, turn, sk2p.

**Dec 5 to 1 (decrease 5 stitches down to 1 stitch)** = Slip next 3 stitches with yarn in front (wyif) to right needle, \*lift 2nd stitch on right needle over first stitch and off needle, slip first stitch on right needle back to left needle, lift 2nd stitch on left needle over first stitch and off needle\*\*, slip first stitch on left needle back to right needle; repeat from \* to \*\* once more leaving 1 stitch on left needle, knit this stitch.

**Inc 1 to 3 (increase 1 stitch up to 3 stitches)** = (K1 through back loop, k1, k1 through back loop) in next stitch.

**M1** = Make 1 (Increase) – Lift strand between needles to left-hand needle and work strand through the back loop, twisting it to prevent a hole, [knit or purl as indicated by pattern st].

**sk2p** = Slip next stitch as if to knit to right needle, k2tog, lift slipped st over the k2tog st and off needle.

Continued...

**ssk** = Slip next 2 stitches, one at a time as if to knit, to right needle, insert point of left needle through front of sts, knit these sts together through back loop.

**sssk** = Slip next 3 stitches, one at a time as if to knit, to right needle, insert point of left needle through front of sts, knit these 3 sts together through back loop.

## Pattern Stitches

### Bramble Stitch (multiple of 4 sts)

**Row 1 (wrong side):** \*(K1, p1, k1) in next st, p3tog; repeat from \* to end of row.

**Row 2:** Purl.

**Row 3:** \*P3tog, (k1, p1, k1) in next st; repeat from \* to end of row.

**Row 4:** Purl.

Repeat these 4 rows for Bramble st pattern.

## Cable Patterns

### Teardrop Pattern (over 15 sts)

See Chart on page 3

**Butterfly Pattern** (begins over 23 sts, increases to 35 sts and decreases back to 23 sts)

See Chart on page 3

### Cascading Leaves Pattern (over 16 sts)

See Chart on page 3

### Leaves and Berries Pattern (over 19 sts)

See Chart on page 4

### Multi-Cable Pattern (over 34 sts)

See Chart on page 4

## Notes

1. Circular needle is used to accommodate large number of stitches. Work back and forth in rows as if working with straight needles.
2. Each cable section will have a slightly different gauge. Stockinette stitch gauge given serves as an average gauge.

## BLANKET

Cast on 286 sts.

### Lower Border

**Row 1 (wrong side):** Slip 1, k2, place marker (pm), work Row 1 of Bramble st pattern to last 3 sts, pm, k3.

**Row 2 (right side):** Slip 1, p2, slip marker (sm), work next row of Bramble st pattern to marker, sm, p2, k1.

**Row 3:** Slip 1, k2, sm, work next row of Bramble st pattern to marker, sm, k3.

**Rows 4–15:** Repeat last 2 rows 6 more times.

### Begin Cable Patterns

**Set-Up Row 1 (right side):** Slip 1, p2, sm, work Bramble st as established over next 20 sts, pm, p3, work Row 1 of Teardrop pattern over next 15 sts, p3, pm, p3, work Row 1 of Butterfly pattern over next 23 sts, p3, pm, p3, work Row 1 of Cascading Leaves pattern over next 16 sts, p2, pm, p5, work Row 1 of Leaves & Berries pattern over next 19 sts, p5, pm, p3, work Row 1 of Multi-Cable pattern over next 34 sts, p3, pm, p5, work Row 1 of Leaves & Berries pattern over next 19 sts, p5, pm, p2, work Row 1 of Cascading Leaves pattern over next 16 sts, p3, pm, p3, work Row 1 of Butterfly pattern over next 23 sts, p3, pm, p3, work Row 1 of Teardrop pattern over next 15 sts, p3, pm, work Bramble st as established over next 20 sts, sm, p2, k1.

**Rows 2–322:** Continue to work patterns as established, slipping markers between patterns as you come to them and remembering to slip 1 st at the beginning of every row.

## Notes:

1. The last pattern row you work should include Row 1 of Bramble st pattern, Row 2 of Teardrop pattern, Row 42 of Butterfly pattern, Row 2 of Cascading Leaves pattern, Row 14 of Leaves & Berries pattern, and Row 14 of Multi-Cable pattern.
2. When working next row, remove all markers, except first and last marker.

**Row 323 (right side):** Slip 1, p2, sm, work Bramble st as established over next 280 sts, sm, p2, k1.

**Row 324:** Slip 1, k2, sm, work Bramble st as established to marker, sm, k2, p1.

**Rows 325–336:** Repeat last 2 rows 6 more times.

Bind off as if to knit.

## FINISHING

Weave in all ends.

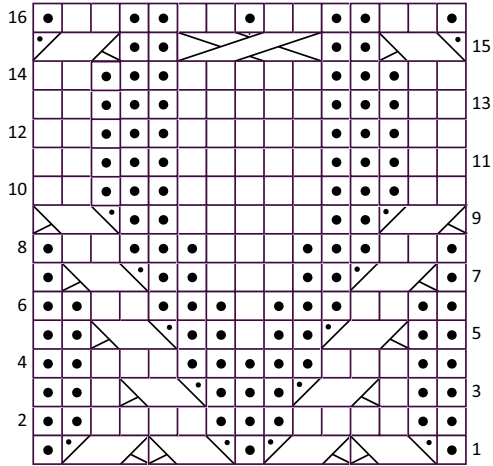
## ABBREVIATIONS

**k** = knit; **p** = purl; **p2tog** = purl next 2 sts together; **p3tog** = purl next 3 sts together; **pm** = place marker; **sm** = slip marker; **st(s)** = stitch(es); **yo** = yarn over; **( )** = work directions in parentheses into same st; **[ ]** = work directions in brackets the number of times specified; **\*** or **\*\*** = repeat whatever follows the \* or \*\* as indicated.

Continue for Charts



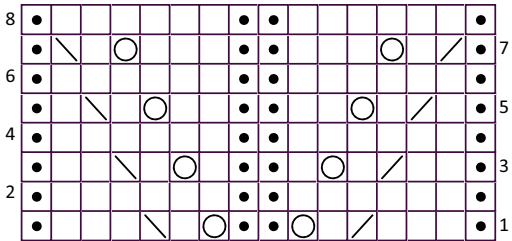
TEARDROP CHART



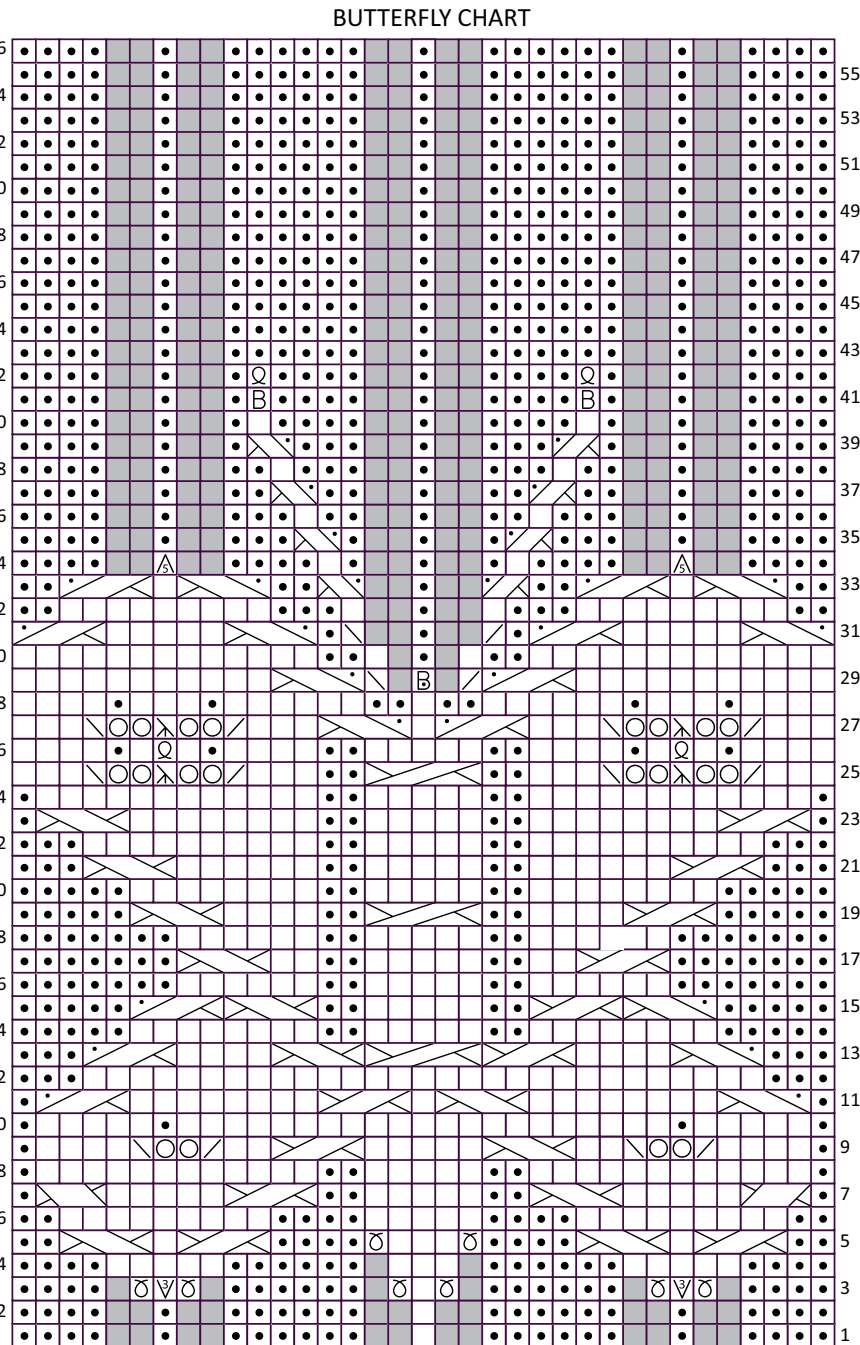
- Key**
- k on RS, p on WS
  - p on RS, k on WS
  - 2/1 RPC
  - 2/1 LPC
  - 2/1/2 RPC

Chart updated 2-28-14

CASCADING LEAVES CHART



- Key**
- k on RS, p on WS
  - p on RS, k on WS
  - yo
  - k2tog
  - ssk



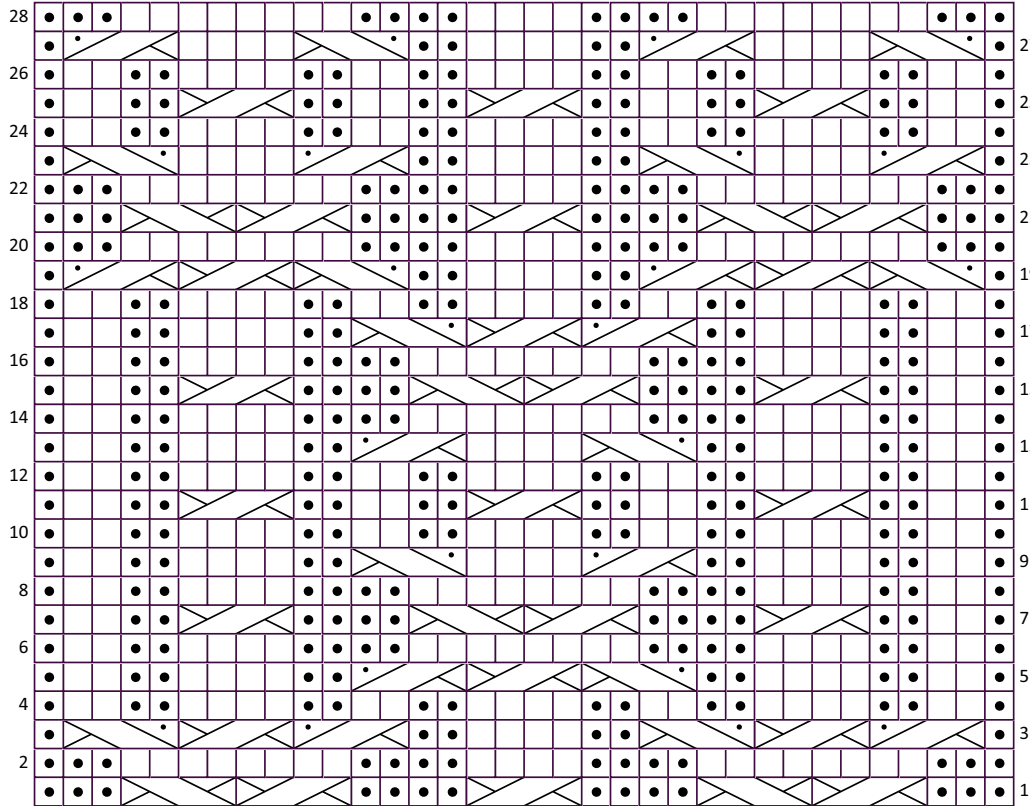
- Key**
- k on RS, p on WS
  - p on RS, k on WS
  - no stitch
  - Inc 1 to 3
  - M1
  - yo
  - k2tog
  - ssk
  - 2/2 RC
  - 2/2 LC
  - 2/3 RC
  - 2/1 RC
  - 2/1 LC
  - 2/2 RPC
  - 2/2 LPC
  - Bobble 5
  - Bobble 3
  - k tbl on RS, p tbl on WS
  - 1/1 RPC
  - 1/1 LPC
  - Dec 5 to 1
  - sssk

Chart updated 2-28-14

More Charts...



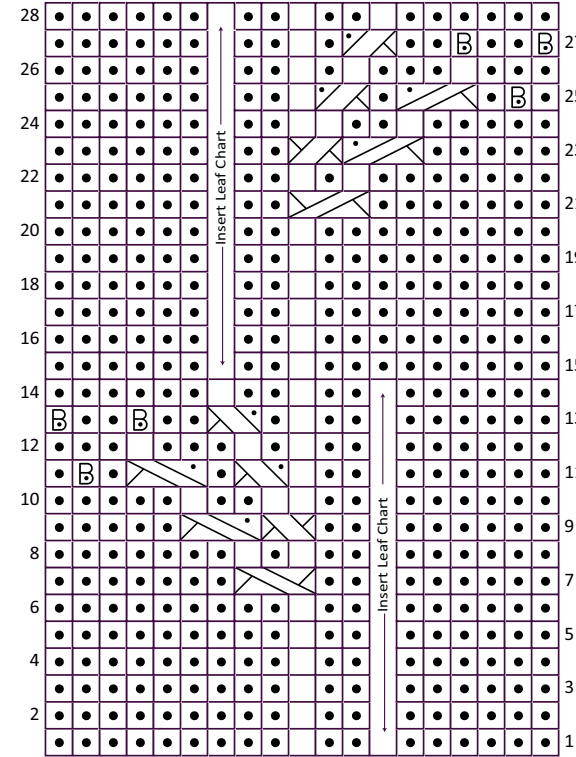
MULTI-CABLE PATTERN



Key

- k on RS, p on WS
- p on RS, k on WS
- 2/2 RC
- 2/2 LC
- 2/2 RPC
- 2/2 LPC

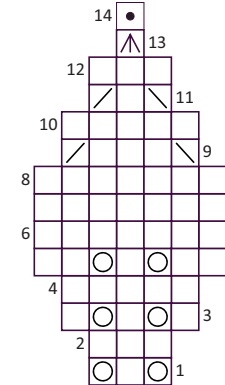
LEAVES & BERRIES CHART



Key

- k on RS, p on WS
- p on RS, k on WS
- Bobble 5
- 1/2 LC
- 1/2 LPC
- 1/2 RC
- 1/2 RPC
- 1/1 LC
- 1/1 LPC
- 1/1 RC
- 1/1 RPC
- yo
- k2tog
- ssk
- sk2p

LEAF CHART



- K on RS, P on WS
- P on RS, K on WS
- no stitch
- K2tog
- ssk on RS, p tbl on WS
- yo
- sk2p