



MATERIALS

Red Heart® Super Saver® (7 oz/198 g; 364 yds/333 m)

Turqua (0512)

1 ball or 57 yds/52 m

Note: 1 ball of Red Heart® Super Saver™ will make approx 6 Masks.

Size U.S. H/8 (5 mm) crochet hook **or size needed to obtain gauge.** 11" x 12" [28 x 30.5 cm] piece of lining fabric (heavyweight quilter's cotton,annel or high thread count bedding recommended). Pins. Coats & Clark Dual Duty XP® All-purpose Thread. Sewing needle.
Alternate Versions: Ribbon Ties Version: 72" [1.8 m] of ¼" [6 mm] wide ribbon; Elastic Ear Loops Version: 12" [30.5 cm] of ¼" [6 mm] wide elastic.



CROCHET | SKILL LEVEL: **EASY**

ABBREVIATIONS

Approx =

Approximately

Beg = Beginning

Ch = Chain(s)

Hdc = Half double
crochet

Hdc2tog = (Yoh and
draw up a loop in
next stitch) twice. Yoh
and draw through all
loops on hook.

Rep = Repeat

RS = Right side

Sc = Single crochet

Sl st = Slip stitch

St(s) = Stitch(es)

WS = Wrong side

Yoh = Yarn over hook

SIZE

One size to ÿt Adult.

Rep last row until work from beg
(at middle hdc section) measures
5" [12.5 cm].

GAUGE

13 sc and 14 rows = 4" [10 cm].

INSTRUCTIONS

Ch 29.

Foundation row: (WS). Sl st in
2nd ch from hook and in next ch.
1 sc in each of next 4 ch. 1 hdc in
each of next 16 ch. 1 sc in each of
next 4 ch. Sl st in each of last 2 ch.
Turn. 28 sts.

1st row: (RS). Ch 1. *Working in back
loops only*, sl st in each of ÿrst 2 sts.
1 sc in each of next 4 sc. 1 hdc in
each of next 16 hdc. 1 sc in each
of next 4 sc. Sl st in each of last
2 sts. Turn.

Next row: Ch 1. *Working in back
loops only*, sl st in each of ÿrst 2 sts.
1 sc in each of next 4 sc. 1 hdc in
each of next 7 hdc. Hdc2tog. 1 hdc
in each of next 7 hdc. 1 sc in each
of next 4 sc. Sl st in each of last
2 sts. **Do not** turn.

**Alternate Ribbon Ties or Elastic
Ear Loop Versions (see page 2):**
Fasten o°.

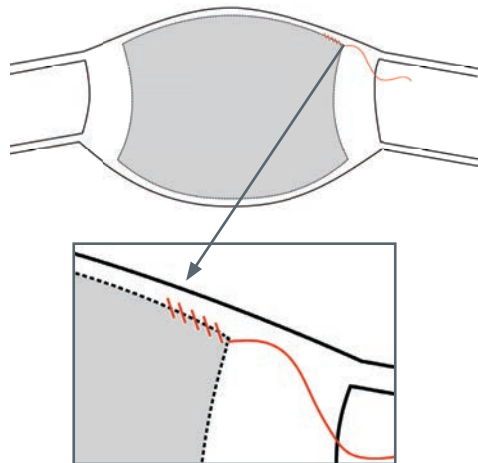
Crochet Ties and Edging: *Ch 59
(tie). Sl st in 2nd ch from hook and
in each ch to end of chain.* Sl st
evenly across side edge of Mask.
Rep from * to * once. Sl st evenly

across lower edge of Mask. Rep from * to * once. Sl st evenly up side edge of Mask. Rep from * to * once. Sl st evenly across top edge of Mask. Sl st into corner. Fasten off.

ASSEMBLY

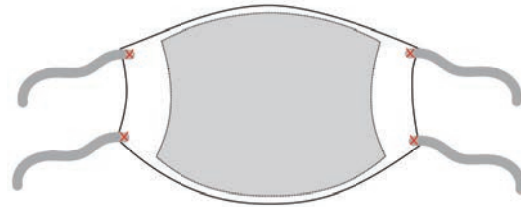
Cut Lining Template out (see page 3 - print at 100% scale). Alternatively, draw onto paper using template as guide, noting each square represents 1" [2.5 cm] square. Trace onto Lining Fabric and cut out 2 pieces.

Stack Lining pieces and turn under ¼" [6 mm] along perimeter to WS. Center WS of fabric on WS of Mask and pin into position. With sewing needle and all-purpose thread, whipstitch fabric to Mask.

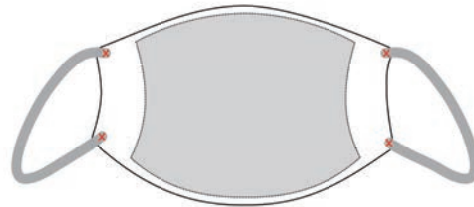


Alternate Versions:

Ribbon Ties: Sew 18" [45.5 cm] length of ribbon securely to each corner on WS of Mask.



Elastic Ear Loops: Sew ends of 6" [15 cm] length of elastic securely to each corner on WS of Mask.

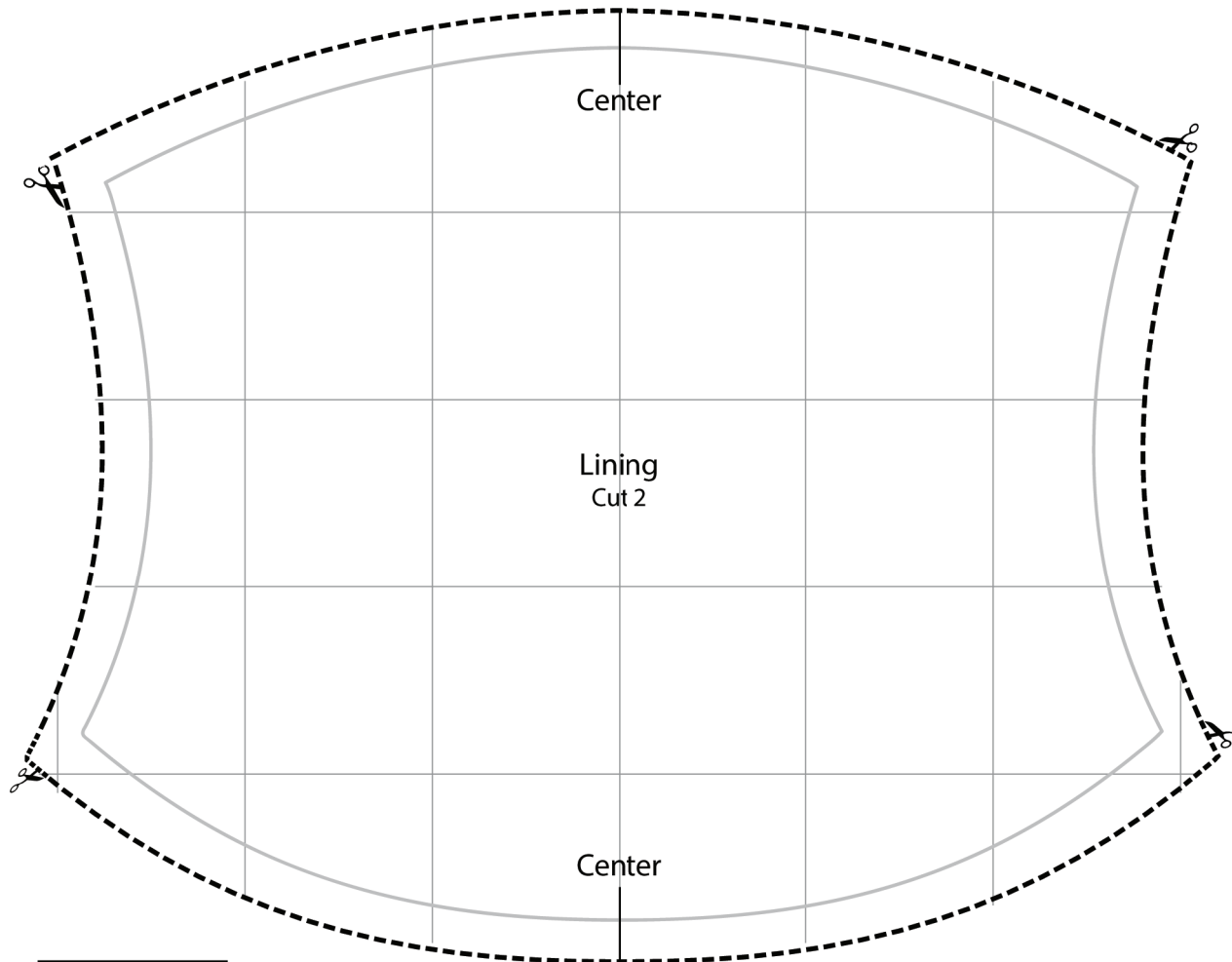


Front



Back





This square
should measure
1" x 1"
[2.5 x 2.5 cm]
when printed.