



KNIT | SKILL LEVEL: INTERMEDIATE

## ABBREVIATIONS

**Approx** = Approximately

**Beg** = Beginning

**Cont** = Continue

**K** = Knit

**K2tog** = Knit next 2 stitches together

**Kfb** = Increase 1 stitch by knitting into front and back of next stitch

**LT** = Left twist: Skip first stitch on left-hand needle and knit 2nd stitch through back loop, leaving stitch on needle. Knit 1st and 2nd stitches together through back loops.

**P** = Purl

**Pat** = Pattern

**Rep** = Repeat

**RS** = Right side

**RT** = Right twist: Knit next 2 stitches together leaving sts on left-hand needle. Insert right-hand needle between 2 stitches and knit first st again. Slip both stitches from needle.

**St(s)** = Stitch(es)

**Tog** = Together

**WS** = Wrong side

## MEASUREMENTS

Approx 56" x 60" [142 x 152.5 cm].

## GAUGE

8 sts and 13 rows = 4" [10 cm] in stocking st.

## INSTRUCTIONS

Cast on 102 sts. **Do not** join. Working back and forth across needle in rows, proceed as follows:

Knit 4 rows, noting first row is WS.

**Increase row:** K5. Kfb. \*K9. Kfb. Rep from \* to last 6 sts. K6. 112 sts.

Proceed in Twisted St Pat as follows (see chart on page 3):

## MATERIALS

**Bernat® Blanket™** (10.5 oz/300 g; 220 yds/201 m)

Vintage White (10006)

**5 balls or 927 yds/848 m**

Size U.S. 11 (8 mm) circular knitting needle 36" [91.5 cm] long **or size needed to obtain gauge.**

**1st row:** (RS). K4. P6. [(RT) 4 times. (LT) 4 times. P3. (LT) 4 times. (RT) 4 times. P3] twice. (RT) 4 times. (LT) 4 times. P6. K4.

**2nd row:** K10. (P16. K3) 5 times. K7.

**3rd row:** K4. P5. [(RT) 4 times. P2. (LT) 4 times. P3. (LT) 3 times. (RT) 4 times. P3] twice. (RT) 4 times. P2. (LT) 4 times. P5. K4.

**4th row:** K9. (P8. K2. P8. K3. P14. K3) twice. P8. K2. P8. K9.

**5th row:** K4. P4. [(RT) 4 times. P4. (LT) 4 times. P3. (LT) twice. (RT) 4 times. P3] twice. (RT) 4 times. P4. (LT) 4 times. P4. K4.

**6th row:** K8. (P8. K4. P8. K3. P12. K3) twice. P8. K4. P8. K8.

**7th row:** K4. P3. [(RT) 4 times. P6. (LT) 4 times. P3. LT. (RT) 4 times. P3] twice. (RT) 4 times. P6. (LT) 4 times. P3. K4.

**8th row:** K7. (P8. K6. P8. K3. P10. K3) twice. P8. K6. P8. K7

**9th row:** K4. P2. [(RT) 4 times. P8. (LT) 4 times. P3. (RT) 4 times. P3] twice. (RT) 4 times. P8. (LT) 4 times. P2. K4.

**10th row:** K6. (P8. K8. P8. K3. P8. K3) twice. P8. K8. P8. K6.

**11th row:** K4. P3. [(LT) 4 times. P6. (RT) 4 times. P3. (RT) 4 times. LT. P3] twice. (LT) 4 times. P6. (RT) 4 times. P3. K4.

**12th row:** K7. (P8. K6. P8. K3. P10. K3) twice. P8. K6. P8. K7.

**13th row:** K4. P4. [(LT) 4 times. P4. (RT) 4 times. P3. (RT) 4 times. (LT) twice. P3] twice. (LT) 4 times. P4. (RT) 4 times. P4. K4.

**14th row:** K8. (P8. K4. P8. K3. P12. K3) twice. P8. K4. P8. K8.

**15th row:** K4. P5. [(LT) 4 times. P2. (RT) 4 times. P3. (RT) 4 times. (LT) 3 times. P3] twice. (LT) 4 times. P2. (RT) 4 times. P5. K4.

**16th row:** K9. (P8. K2. P8. K3. P14. K3) twice. P8. K2. P8. K9.

**17th row:** K4. P6. [(LT) 4 times. (RT) 4 times. P3. (RT) 4 times. (LT) 4 times. P3] twice. (LT) 4 times. (RT) 4 times. P6. K4.

**18th row:** K10. (P16. K3) 5 times. K7.

**19th row:** K4. P7. [(LT) 3 times. (RT) 4 times. P3. (RT) 4 times. P2. (LT) 4 times. P3] twice. (LT) 3 times. (RT) 4 times. P7. K4.

**20th row:** K11. (P14. K3. P8. K2. P8. K3) twice. P14. K11.

**21st row:** K4. P8. [(LT) twice. (RT) 4 times. P3. (RT) 4 times. P4. (LT) 4 times. P3] twice. (LT) twice. (RT) 4 times. P8. K4.

**22nd row:** K12. (P12. K3. P8. K4. P8. K3) twice. P12. K12.

**23rd row:** K4. P9. [(LT. (RT) 4 times. P3. (RT) 4 times. P6. (LT) 4 times. P3] twice. LT. (RT) 4 times. P9. K4.

**24th row:** K13. (P10. K3. P8. K6. P8. K3) twice. P10. K13.

**25th row:** K4. P10. [(RT) 4 times. P3. (RT) 4 times. P8. (LT) 4 times. P3] twice. (RT) 4 times. P10. K4.

**26th row:** K14. (P8. K3. P8. K8. P8. K3) twice. P8. K14.

**27th row:** K4. P9. [(RT) 4 times. LT. P3. (LT) 4 times. P6. (RT) 4 times. P3] twice. (RT) 4 times. LT. P9. K4.

**28th row:** K13. (P10. K3. P8. K6. P8. K3) twice. P10. K13.

**29th row:** K4. P8. [(RT) 4 times. (LT) twice. P3. (LT) 4 times. P4. (RT) 4 times. P3] twice. (RT) 4 times. (LT) twice. P8. K4.

**30th row:** K12. (P12. K3. P8. K4. P8. K3) twice. P12. K12.

**31st row:** K4. P7. [(RT) 4 times. (LT) 3 times. P3. (LT) 4 times. P2. (RT) 4 times. P3] twice. (RT) 4 times. (LT) 3 times. P7. K4.

**32nd row:** K11. (P14. K3. P8. K2. P8. K3) twice. P14. K11.

Cont in pat until work from beg measures approx 59" [150 cm], ending on a 16th or 32nd row of pat.

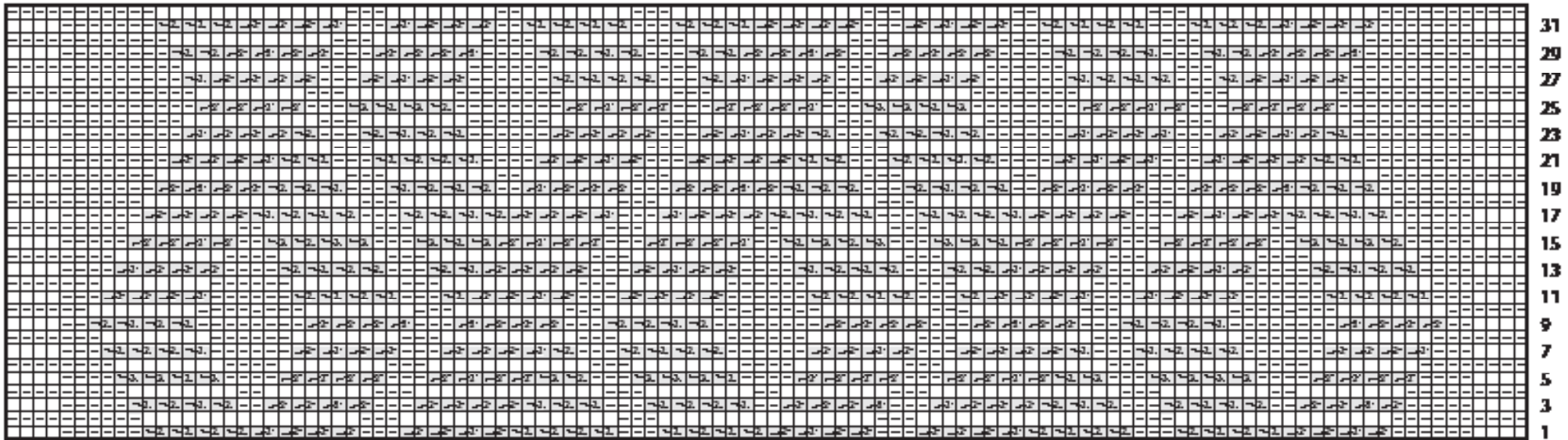
**Decrease Row:** (RS). K5. K2tog. \*K9. K2tog. Rep from \* to last 6 sts. K6. 102 sts.

Knit 4 rows (garter st).

Cast off knitwise.



Chart



**Key**

- = Knit on RS rows; Purl on WS rows
- ▤ = Purl on RS rows; Knit on WS rows
- ▥ = RT
- ▦ = LT

Start here