



zest tote bags

just ask, Jo-Ann **how to**

more projects, tips & techniques at Joann.com®

SUPPLIES & TOOLS:

- Stonehill Collection fabrics: makes one tote
1/2 yd Fabric A (for handles and tote)
1/4 yd Fabric B (for band and flowers)
1/2 yd Fabric C (for lining and tie)
- Thread
- 30"x20" lightweight quilt batting
- Sewing machine and basic sewing supplies
- Iron and ironing surface
- Pinking shears
- Ruler
- Water-soluble pen
- Optional: Rotary cutter, ruler and mat

DIRECTIONS:**CUTTING:**

1. From fabric A cut two 15"x12 $\frac{3}{4}$ " = front and back, two 19"x4" = handles
2. From fabric B cut two 15"x5 $\frac{3}{4}$ " = front and back band
3. From fabric B cut with pinking shears 6 circles 2 $\frac{3}{4}$ " diameter = flowers, 4 circles 2 $\frac{1}{2}$ " diameter = flowers, 4 circles 2 $\frac{1}{4}$ " diameter = flowers
4. From fabric C cut two 15"x15" = lining, one 40"x1 $\frac{1}{2}$ " = tie
5. From quilt batting cut two 15"x15" = front and back, two 19"x2" = handles

ASSEMBLY:

Note: Stitch all seams with right sides together.

1. Stitch a front and back band to the top edge of the front and back using 1/4" seam allowance. Press seam open. (FIG 1)
2. Beginning 1 $\frac{3}{8}$ " from the center of seam, draw diagonal quilting lines 2" apart on front and back with a water-soluble pen. (FIG 2)

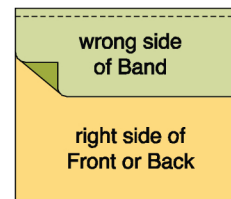


FIG 1

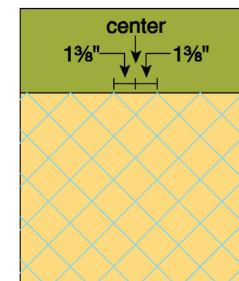


FIG 2

3. Place batting between these joined pieces and the lining pieces with the sides and lower edges even. The top band will extend 3" above batting and lining. Pin along the outer edges and along the seam line and quilting lines. (FIG 3)

4. Stitch in the ditch along the seam line. Quilt along the drawn lines. Baste 3/8" from sides and lower edges. (FIG 4)

5. Pin front and back with right side together. Stitch 1/2" from sides and lower edge. Zigzag finish seam allowance below band. (FIG 5)

6. Fold band to the inside over top edge of quilt batting and lining. Turn under 1/2" along stitching line and stitch. (FIG 6)

7. Fold corners diagonally matching side seam to bottom seam. Draw line 1 3/4" up from corner. Line should measure 3 1/2" across. Stitch along line to miter corner. (FIG 7)

8. Fold tie in half lengthwise. Stitch 1/4" from long edges. Trim seam allowance and turn right side out. Press tie flat with seamline along 1 long edge. (FIG 8)

9. Match center of tie to center of lower edge of the band. Pin tie in place along the lower edge of the band. Make knot in center of other side. Stitch the tie along the edges. (FIG 9)

10. Place quilt batting on 1/2 of the wrong side of the handle pieces. Baste along inner edge of batting and 3/8" from outer edge. Trim stitching along side edge.

FIG 3

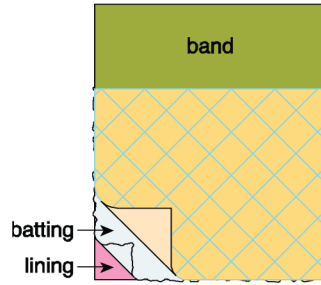


FIG 4

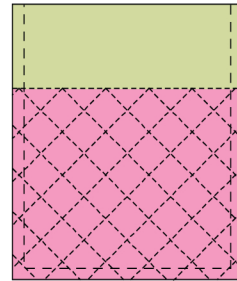


FIG 6

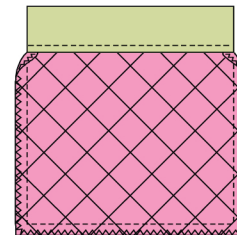


FIG 9

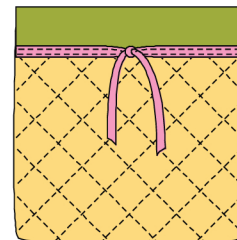


FIG 7

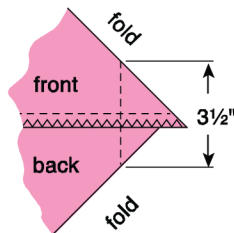


FIG 8



11. Fold the handle in half right sides together and stitch 1/2" from raw edges. Turn right side out and press lightly so seam is along one side edge. Topstitch 1/8" from long edges. (FIG 10)

12. Place the ends of the handles just below the lower edge of the band so that they are each about 2/4" from the center. Pin in place from outside of the bag. From the outside stitch the handle in place along the lower edge of the tie. Topstitch 1/8" from the fold at the top of the band stitching through the handles. (FIG 11)

13. Place two large circles with wrong sides together. Then place the other large circle on top right side up. Then place the medium circles and the small circles on top, all right side up. Draw a 1" diameter circle in the center of the top circle. Make a row of gathering stitches along the circular line and gather slightly to make flower. Knot thread securely. Sew flower to each end of tie. (FIG 12)

FIG 10

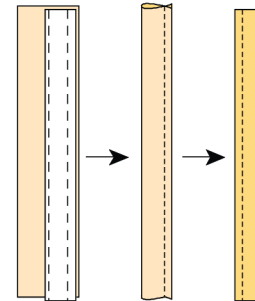


FIG 11

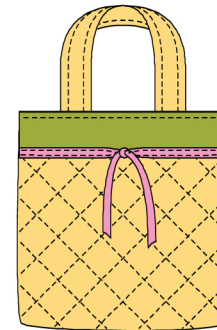
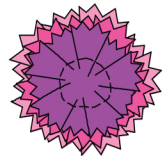


FIG 12



Skill Level 2: Sewing experience needed

Approximate Crafting Time: 1 day

Please read and follow all manufacturers' instructions for all tools and materials used.
Provide adult supervision if children participate in this project.
©2009 Jo-Ann Stores, Inc. All rights reserved.

JO-ANN
fabric and craft stores®

P150-325