

**2** skill  
level

free



knitted diamond scarf

just ask, Jo-Ann **how to**

more projects, tips & techniques at Joann.com®

#### SUPPLIES & TOOLS:

- Patons® Classic Wool® yarn:
    - 2 skeins Dark Gray Mix (MC)
    - 1 skein Winter White (A)
  - Size 7 knitting needles, or size needed to obtain gauge
- GAUGE: 20 sts and 26 rows = 4" in stocking st.

**DIRECTIONS:** When working from chart, wind small balls of colors to be used, one for each separate area of color in the design. Start new colors (A) at appropriate points. To change colors, twist the 2 colors around each other where they meet on WS.

With MC cast on 41 sts.

1st row: (RS). K1. \*P1. K1. Rep from \* to end of row.

2nd row: K1. \*K1. P1. Rep from \* to last 2 sts. K2.

3rd row: (K1. P1) twice. Knit to last 4 sts. (P1. K1) twice.

4th row: K2. P1. K1. Purl to last 4 sts. K1. P1. K2.

5th row: With MC, (K1. P1) twice. K7.

Knit 1st row of Chart I across next 19 sts. With MC, K7. (P1. K1) twice.

6th row: With MC, K2. P1. K1. P7.

Purl 2nd row of Chart I across next 19 sts. With MC, P7. K1. P1. K2.

Chart I is now in position. Keeping 4 sts at each side in rib pat as established, work Chart I to end of chart.

Rep 3rd to 38th rows of Chart I, 8 times more.

Next row: (RS). With MC, (K1. P1) twice. Knit to last 4 sts. (P1. K1) twice.

Next row: K2. P1. K1. Purl to last 4 sts. K1. P1. K2.

Next row: K1. \*P1. K1. Rep from \* to end of row.

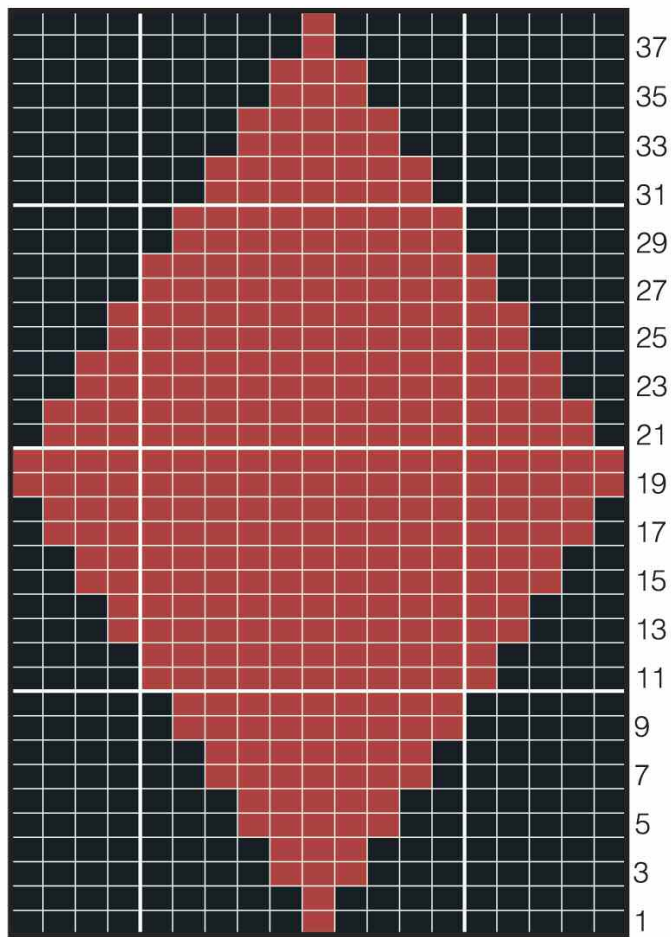
Next row: K1. \*K1. P1. Rep from \* to last 2 sts. K2.

Cast off in pat.

Finished size, 8x51½".

#### ABBREVIATIONS:

K = Knit, P = Purl, Pat = Pattern, Rep = Repeat,  
RS = Right side, St(s) = Stitch(es), WS = Wrong side.



■ = Main Color (MC)

■ = Contrast A

Skill Level 2: Some experience necessary

Please read and follow all manufacturers' instructions for all tools and materials used.  
Provide adult supervision if children participate in this project.  
©2010 Jo-Ann Stores, Inc. All rights reserved.

**JO-ANN**  
fabric and craft stores®  
P441-912 • 391-941