

**Skill level 2
Bat-ty Wall Decoration**

Courtesy of Jo-Ann Stores

Supplies:

- 1 yd. Black felt
- 1/2 yd. Calico
- 1/2 yd. Batting
- 1 pkg. Fiberfill c
- 1 pkg. Fusible web
- 1/2 yd. 1" Ribbon
- Scribbles® Paints
- 3 Small rings for hanging bat
- Basic sewing supplies

Directions:

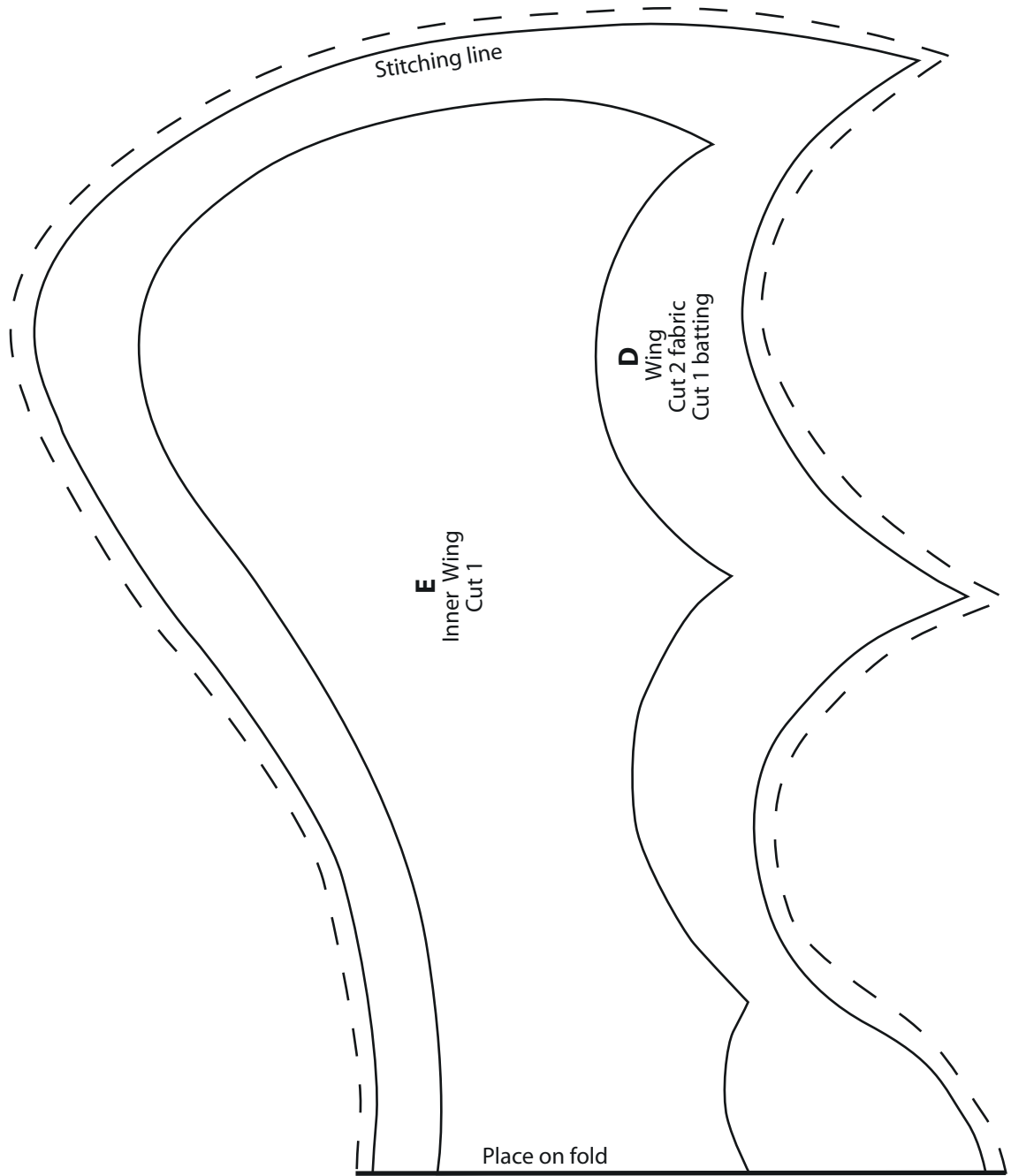
1. Enlarge 200% and cut 2 large wings from the black felt, 1 small wing from the calico and 1 small wing from the batting.
2. Following manufacturer's instructions, center and fuse the calico wing to a felt wing with the web. Cut a 4" opening down and through the center of the fused wing.
3. Cut a large wing from the batting. Put the right sides of the black wings together, and lay on top of the batting. Stitch stack together using a 1/4" seam allowance. Turn. Whip-stitch opening and press. If desired, zigzag stitch around edge of wing.
4. Enlarge 200% and cut 2 bat bodies from black felt. Cut an opening in the center of one body. Enlarge 200% and cut one belly and 2 inner ears from calico. Fuse these to the bat body without the opening. With right sides of bat bodies together stitch around using 1/4" seam allowance. Turn and stuff with fiberfill; whip-stitch opening. Wrap black thread several times around body to create the neck.
5. Referring to photograph, use scribble paints to add eyes and mouth and outline ears.
6. Attach body to wing by sewing or using hot glue. Tack rings to back at head and tips of wings.



Skill Level: Some sewing experience helpful

Approximate Crafting Time: 1-1-1/2 hours

Due to seasonal nature of project, supplies are available for a limited time only. Please read all instructions prior to beginning; read and follow all manufacturers' instructions for all tools and materials used. Provide adult supervision if children participate in this and all craft projects. Because Jo-Ann Stores, Inc. has no control over the use of materials and tools, nor surroundings, during construction of projects, Jo-Ann Stores, Inc. disclaims any liability for injury, damage or other untoward results. Content of this project sheet is presented in good faith, but no warranty is given, nor results guaranteed. ©2006 Jo-Ann Stores, Inc. All rights reserved. 197-386



Stitching line

E
Inner Wing
Cut 1

D
Wing
Cut 2 fabric
Cut 1 batting

Place on fold

